

DELTA Mixers

Durable, Versatile, Dependable

DELTA Equipment manufactures a wide selection of industrial mixers from 1/4 HP to 3 HP for tank volumes of 50 to 5000 gallons. DELTA Mixers are available air or electric powered and are constructed in aluminum, cast iron or stainless steel.

Depending on your specific requirements, DELTA Equipment can supply a fixed-mount single application mixer, an interchangeable multi-drive multi-mount mixer or the versatile DELTA 3N1 mixer that is a flange mount, drum hole entry and open tank mixer in one machine.

DELTA Mixers have been engineered to deliver dependable industrial duty performance in a broad range of chemical environments and are suitable for light to high viscosity fluids. With variable-speed motors, interchangeable propellers in a variety of sizes and materials and design flexibility, DELTA Equipment manufactures a mixer that will seamlessly integrate with your process.

Warranty

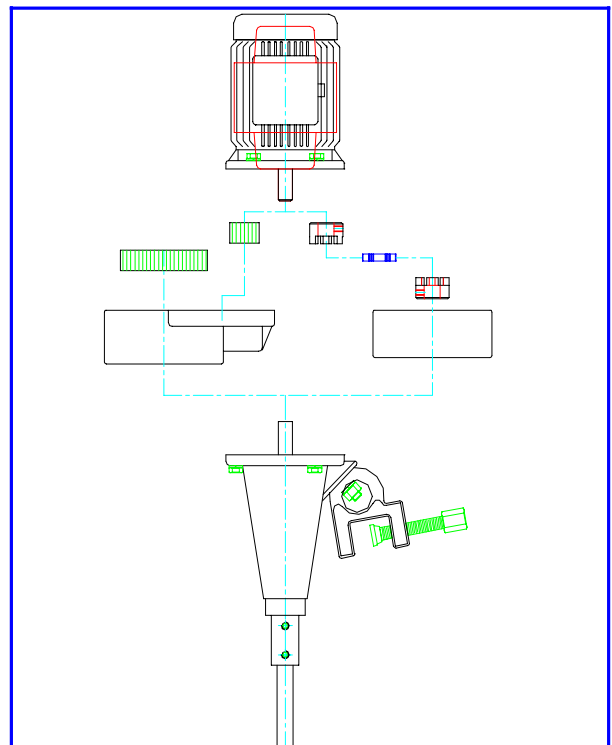
All DELTA Mixers are tested at the factory prior to shipment. Each part used in their construction has been carefully checked for workmanship.

If the mixer is installed properly, it is guaranteed against defects in material and workmanship for a period of one year from the date of shipment, providing that the directions on installation and maintenance given in the instructions are followed.

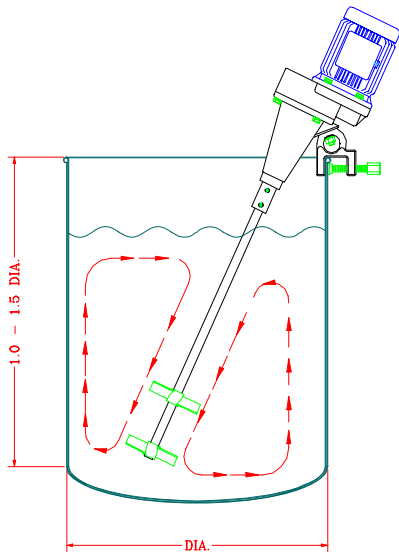
Under these conditions, Delta Equipment will replace without charge any part proving defective within the guarantee period. The company will not, under any condition, be responsible for any charge for labor, repairs, or part, performed or furnished by others, nor for any consequential damages. Its liability under this warranty is limited to the cost of the part involved and in no case shall exceed the original purchase price of the equipment.



Unique Modular Design



Quick Selection Guide



To determine which **DELTA** portable mixer you need, locate your viscosity on the left side of the chart.

Read across to find the volume of your tank. The chart below applies to tanks with proportions similar to the sketch. Please consult your nearest Delta distributor to confirm your choice of mixer.

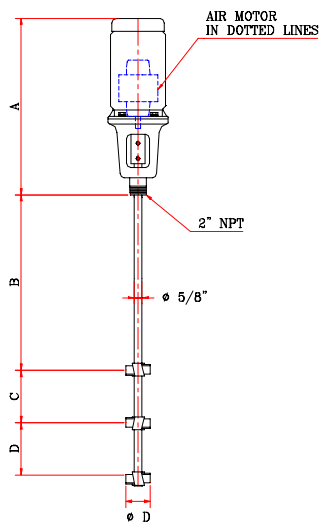
The mixer selection shown below will hold true in most applications.

PD = direct drive
PG = gear drive

Tank Capacities

COMMON MATERIALS	Viscosity Centipoise	50	100	250	500	1000	2000	3000	5000
Gasoline Toluene Water	1.0	PD-0	PD-1	PD-1	PD-2	PD-7 PG-2	PD-8 PG-2	PG-4	PG-5
Blood Sulfuric Acid	100	PD-0	PD-1	PD-2	PD-5	PD-8 PG-1	PG-2	PG-3	PG-5
SAE 10 Oil Olive Oil	250	PD-1	PD-2	PD-3 PG-1	PD-7 PG-1	PG-1	PG-3	PG-5	PG-8
Paint Glucose	500	PD-1 PG-1	PD-3 PG-2	PD-8 PG-2	PD-8 PG-2	PG-3	PG-4	PG-5	PG-8
Castor Oil Catsup	1000	PG-1	PG-2	PG-3	PG-5	PG-7	PG-8		
Glycerol Molasses	2500	PG-2	PG-3	PG-5	PG-7	PG-8			
Corn Syrup Honey	5000	PG-3	PG-5	PG-7	PG-8				
Molten Glass	15000	PG-5	PG-7	PG-8					
Blackstrap Molasses	50000	PG-7	PG-8						

Model 3N1-direct or gear drive

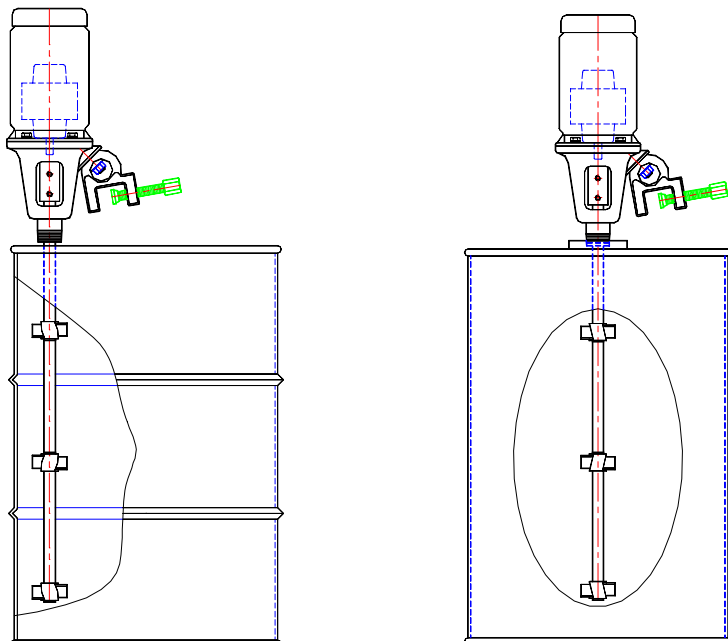


Model No.	HP	Voltage ph.	rpm	Shaft Length L	Shaft Dia. S	Dia in Single	Dia in. Dual	A in	B in.	C in.	D in.
3N1-0	1/3	110/1/60	1750	32"	5/8"	3	3	13.5	18	6	6
3N1-1	1/2	110/1/60	1750	32"	5/8"	4	3	13.5	18	6	6
3N1-3	3/4	110/1/60	1750	32"	3/4"	5	4	13.5	10	10	10
3N1-0A	1/3	AIR DRIVE	1750	32"	5/8"	4	3	13.5	18	6	6
3N1-1A	1/2	AIR DRIVE	1750	32"	5/8"	5	4	13.5	14	8	8
3N1-2A	3/4	AIR DRIVE	1750	32"	3/4"	5	4	13.5	14	8	8
3N1-3A	1	AIR DRIVE	1750	32"	3/4"	6	5	13.5	10	10	10

Standard 3N1 Mixer is supplied with one propeller

Selection Table

Common Fluids	Gasoline Water	Blood	SAE10 Oil Olive Oil	Paint Glucose	Catsup Caster Oil	Glycerol Molasses
Viscosity CPS	1	100	250	500	1000	2500
Tank Size						
55 gal.drum	3N1-0	3N1-0	3N1-1	3N1-1	*PG-1	*PG-2
100 gal.tank	3N1-1	3N1-1	3N1-3	3N1-3	*PG-2	*PG-3
250 gal.tank	3N1-1	3N1-3	3N1-3	*PG-2	*PG-3	*PG-5



Model PD-direct drive

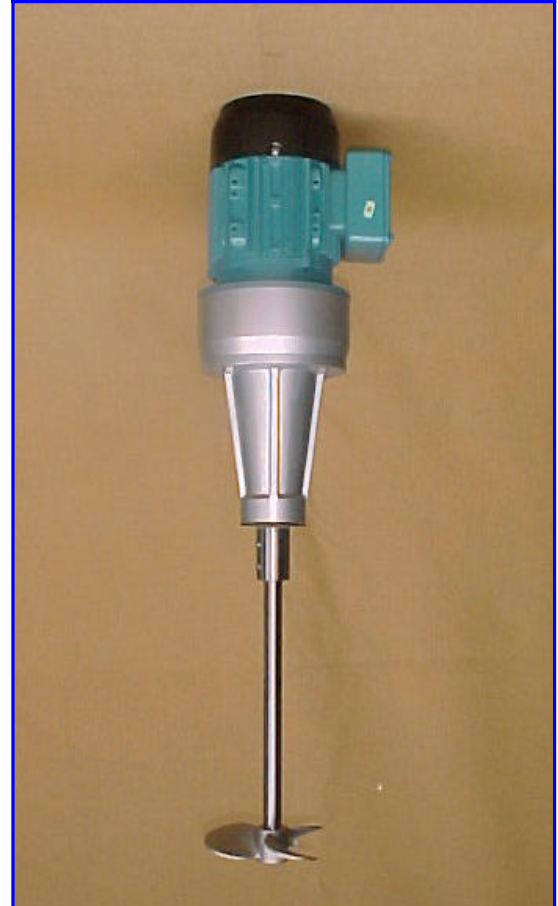
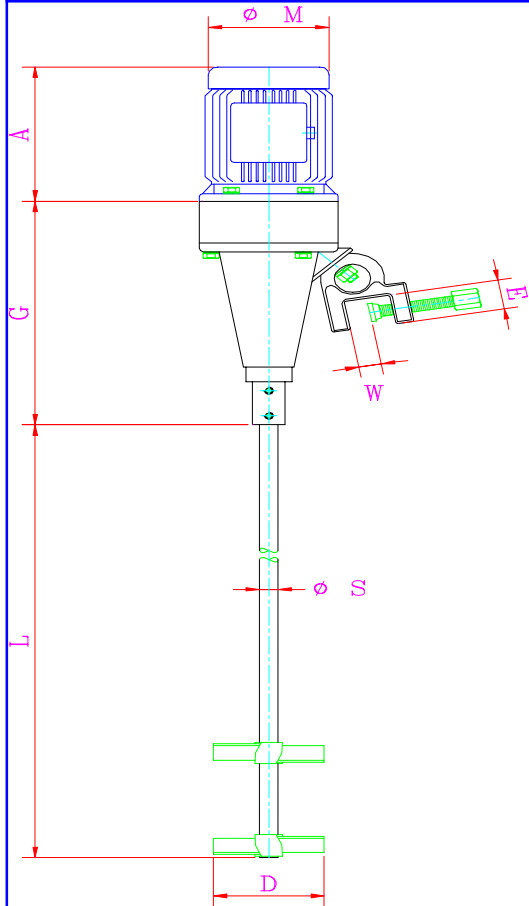
Delta's *super duty* mixers are designed for the most difficult mixing applications, especially for aggressive environments.

Features

- ◆ Permanently greased bearings
- ◆ Aluminum/ C.I./ 304SS Housing
- ◆ Variety of propellers available
- ◆ TEFC enclosure is standard
- ◆ Other enclosures are available upon request
- ◆ Variable speed drives are also available

Model No.	HP	Voltage ph.	rpm	Shaft Length L	Shaft Dia. S	G in.	A in	D in Single	D in. Dual	W in.	E in.	M in.
PD-0	1/3	110/1/60	1750	48"	3/4"	11.7	9.3	3	3	1.5	2	5.5
PD-1	1/2	110/1/60	1750	48"	3/4"	11.7	9.3	5	4	1.5	2	5.5
PD-2	1/2	460/3/60	1750	48"	3/4"	11.7	9.3	5	4	1.5	2	5.5
PD-3	3/4	110/1/60	1750	48"	3/4"	11.7	9.3	5	4	1.5	2	6.5
PD-4	3/4	460/3/60	1750	48"	3/4"	11.7	9.3	5	4	1.5	2	6.5
PD-5	1	110/1/60	1750	60"	1"	15.5	9.3	6	5	1.5	2	6.5
PD-6	1	460/3/60	1750	60"	1"	15.5	9.3	6	5	1.5	2	6.5
PD-7	1.5	460/3/60	1750	60"	1 1/4"	16	9.3	6	5	1.5	2 1/4	7.5
PD-8	2	460/3/60	1750	60"	1 1/4"	16	9.3	7	6	1.5	2 1/4	7.5

Overall Dimensions



Model PG-gear drive

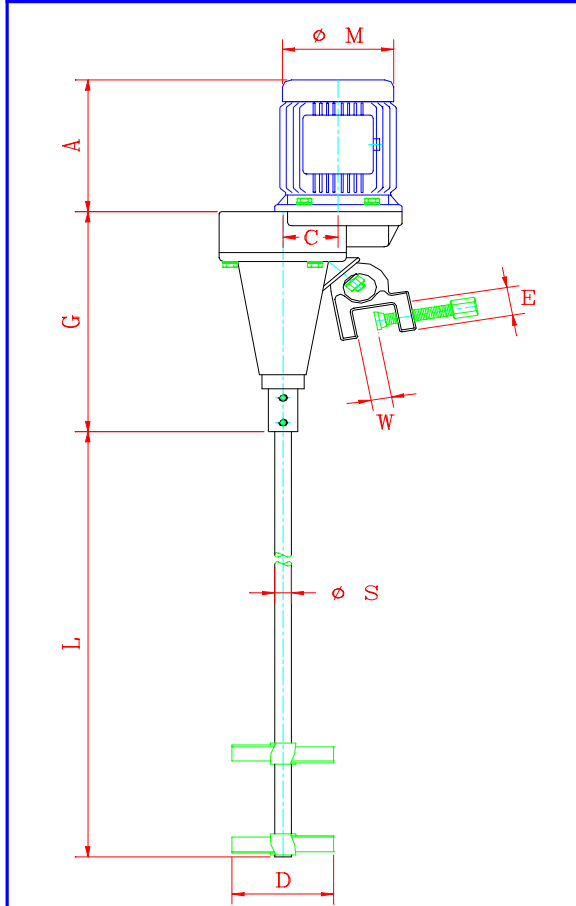
Delta's *super duty* mixers are designed for the most difficult mixing applications, especially for aggressive environments.

Features

- ◆ Permanently greased bearings
- ◆ Aluminum/C.I./304SS Housing
- ◆ Variety of propellers available
- ◆ TEFC enclosure is standard
- ◆ Other enclosures are available upon request
- ◆ Variable speed drives are also available

Model No.	HP	Voltage ph.	rpm	Shaft Length L	Shaft Dia. S	G in.	A in.	D in Single	D in. Dual	W in.	E in.	M in.
PG-0	1/3	110/1/60	350	48"	3/4"	11.7	9.3	10	8	1.5	2	5.5
PG-1	1/2	110/1/60	350	48"	3/4"	11.7	9.3	12	10	1.5	2	5.5
PG-2	1/2	460/3/60	350	48"	3/4"	11.7	9.3	12	10	1.5	2	5.5
PG-3	3/4	110/1/60	350	48"	3/4"	11.7	9.3	13	11	1.5	2	6.5
PG-4	3/4	460/3/60	350	48"	3/4"	11.7	9.3	13	11	1.5	2	6.5
PG-5	1	110/1/60	350	60"	1"	15.5	9.3	14	12	1.5	2	6.5
PG-6	1	460/3/60	350	60"	1"	15.5	9.3	14	12	1.5	2	6.5
PG-7	1.5	460/3/60	350	60"	1 1/4"	16	12	15	13	1.5	2 1/4	7.5
PG-8	2	460/3/60	350	60"	1 1/4"	16	12	16	14	1.5	2 1/4	7.5

Overall Dimensions



Model PGF-flange mount

Delta's *super duty* mixers are designed for the most difficult mixing applications, especially for aggressive environments.

Features

- ◆ Permanently greased bearings
- ◆ Aluminum/C.I./304SS Housing
- ◆ Variety of propellers available
- ◆ TEFC enclosure is standard
- ◆ Other enclosures are available upon request
- ◆ Variable speed drives are also available

Model No.	HP	Voltage ph.	rpm	Shaft Length L	Shaft Dia. S	G in.	A in	D in Single	D in. Dual	W in.	E in.	M in.
PGF-0	1/3	110/1/60	350	48"	3/4"	11.7	9.3	10	8	1.5	9	5.5
PGF-1	1/2	110/1/60	350	48"	3/4"	11.7	9.3	12	10	1.5	9	5.5
PGF-2	1/2	460/3/60	350	48"	3/4"	11.7	9.3	12	10	1.5	9	5.5
PGF-3	3/4	110/1/60	350	48"	3/4"	11.7	9.3	13	11	1.5	9	6.5
PGF-4	3/4	460/3/60	350	48"	3/4"	11.7	9.3	13	11	1.5	9	6.5
PGF-5	1	110/1/60	350	60"	1"	15.5	9.3	14	12	1.5	10	6.5
PGF-6	1	460/3/60	350	60"	1"	15.5	9.3	14	12	1.5	10	6.5
PGF-7	1.5	460/3/60	350	60"	1 1/4"	16	12	15	13	1.5	10	7.5
PGF-8	2	460/3/60	350	60"	1 1/4"	16	12	16	14	1.5	10	7.5

Overall Dimensions

