

Schedule 80 PVC Industrial Products & Accessories

PVC Gray Saddles & Hot-Tap Saddles

PVC Gray Saddles & Hot-Tap Saddles



PRICING

Effective March 30, 2015



Welding & Fabrication Inc

4268 Dundas Street, Thorndale, ON N0M 2P0

Telephone: (519) 268-1190 - Fax: (519) 268-1107 - Toll Free: 1-888-475-2726

Schedule 80 PVC Industrial Products & Accessories
Glue-On Saddles

Part Number	Size	Std Pk	Mstr Ctn	Prod Code	Price Each
-------------	------	--------	----------	-----------	------------

Saddle

IPS O.D. x Socket Schedule 80



Non Pressure Rated

3963-528	6X2	1	5	400	60.22
3963-530	6X3	1	10	400	60.76
3963-532	6X4	1	5	400	61.28
3963-578	8X2	1	10	400	85.07
3963-580	8X3	1	8	400	86.11
3963-582	8X4	1	5	400	87.03
3963-585	8X6	1	5	400	89.06
3963-621	10X2	1	8	400	78.77
3963-623	10X3	1	5	400	79.88
3963-624	10X4	1	8	400	80.22
3963-626	10X6	1	5	400	93.28
3963-628	10X8	1	5	400	149.49
3963-661	12X2	1	10	400	93.06
3963-663	12X3	1	8	400	93.61
3963-664	12X4	1	10	400	94.40
3963-666	12X6	1	5	400	109.48
3963-668	12X8	1	2	400	172.28
3963-670	12X10	1	4	400	210.86
3963-693	14X3	1	8	400	115.68
3963-694	14X4	1	5	400	116.24
3963-696	14X6	1	8	400	132.32
3963-698	14X8	1	4	400	202.85
3963-700	14X10	1	3	400	259.77
3963-702	14X12	1	4	400	286.83
3963-751	16X2	1	8	400	120.69
3963-753	16X3	1	8	400	121.74
3963-754	16X4	1	10	400	122.43
3963-756	16X6	1	8	400	139.54
3963-758	16X8	1	3	400	208.08
3963-760	16X10	1	0	400	264.96
3963-762	16X12	1	0	400	294.28
3963-764	16X14	1	0	400	306.66
3963-781	18X2	1	8	400	177.31
3963-783	18X3	1	4	400	178.38
3963-784	18X4	1	5	400	179.19
3963-786	18X6	1	5	400	189.65
3963-788	18X8	1	5	400	278.65
3963-790	18X10	1	0	400	308.91
3963-792	18X12	1	0	400	440.55
3963-794	18X14	1	0	400	479.48
3963-796	18X16	1	0	400	627.41
3963-811	20X2	1	12	400	179.33
3963-813	20X3	1	4	400	179.75
3963-814	20X4	1	6	400	181.91
3963-816	20X6	1	0	400	190.82
3963-818	20X8	1	5	400	275.64
3963-820	20X10	1	0	400	305.68
3963-822	20X12	1	0	400	436.02
3963-824	20X14	1	0	400	475.54
3963-826	20X16	1	0	400	623.04
3963-828	20X18	1	0	400	707.43
3963-901	24X2	1	5	400	182.47
3963-903	24X3	1	5	400	183.44
3963-904	24X4	1	5	400	184.28
3963-906	24X6	1	5	400	192.29
3963-908	24X8	1	5	409	273.18
3963-910	24X10	1	5	400	307.00
3963-912	24X12	1	0	409	428.69
3963-914	24X14	1	0	400	473.88
3963-916	24X16	1	0	400	648.61
3963-918	24X18	1	0	400	731.41

Part Number	Size	Std Pk	Mstr Ctn	Prod Code	Price Each
-------------	------	--------	----------	-----------	------------

Saddle (continued)

IPS O.D. x Socket Schedule 80

3963-920	24X20	1	0	400	823.20
----------	-------	---	---	-----	--------

Stub Saddle

IPS O.D. x Socket Schedule 80



Non Pressure Rated

3965-528	6X2	1	10	400	64.76
3965-530	6X3	1	3	400	65.32
3965-532	6X4	1	10	400	65.91
3965-578	8X2	1	5	409	90.52
3965-580	8X3	1	4	400	92.59
3965-582	8X4	1	6	400	93.58
3965-585	8X6	1	4	400	95.77
3965-621	10X2	1	6	400	84.71
3965-623	10X3	1	6	409	85.00
3965-624	10X4	1	4	400	86.26
3965-626	10X6	1	4	400	100.29
3965-628	10X8	1	4	400	160.74
3965-661	12X2	1	4	400	100.06
3965-663	12X3	1	4	400	101.13
3965-664	12X4	1	2	400	101.51
3965-666	12X6	1	2	400	117.73
3965-668	12X8	1	2	400	185.25
3965-670	12X10	1	2	400	271.75
3965-691	14X2	1	4	400	123.25
3965-693	14X3	1	4	400	124.40
3965-694	14X4	1	5	400	124.98
3965-696	14X6	1	2	400	142.27
3965-700	14X10	1	0	400	279.33
3965-702	14X12	1	0	400	308.41
3965-751	16X2	1	5	400	129.77
3965-753	16X3	1	4	400	130.89
3965-754	16X4	1	3	400	131.63
3965-756	16X6	1	2	400	150.03
3965-758	16X8	1	3	400	223.75
3965-760	16X10	1	3	400	284.92
3965-762	16X12	1	0	400	316.43
3965-764	16X14	1	0	400	329.76
3965-781	18X2	1	2	400	190.64
3965-783	18X3	1	0	400	191.80
3965-784	18X4	1	0	400	192.67
3965-786	18X6	1	2	400	203.93
3965-788	18X8	1	0	400	299.62
3965-790	18X10	1	0	400	332.16
3965-792	18X12	1	0	400	473.71
3965-794	18X14	1	0	400	515.58
3965-796	18X16	1	0	400	674.63
3965-811	20X2	1	4	400	192.82
3965-813	20X3	1	2	400	193.27
3965-814	20X4	1	0	400	195.59
3965-816	20X6	1	0	400	205.17
3965-818	20X8	1	0	400	296.39
3965-820	20X10	1	0	400	328.69
3965-822	20X12	1	0	400	468.84
3965-824	20X14	1	0	400	511.33
3965-826	20X16	1	0	400	669.96
3965-828	20X18	1	0	400	760.68
3965-901	24X2	1	5	400	196.20
3965-903	24X3	1	2	400	197.24
3965-904	24X4	1	5	400	198.15
3965-906	24X6	1	3	400	206.78
3965-908	24X8	1	0	400	296.86
3965-910	24X10	1	0	400	330.12
3965-912	24X12	1	0	409	460.98

Schedule 80 PVC Industrial Products & Accessories

Glue-On Saddles

Part Number	Size	Std Pk	Mstr Ctn	Prod Code	Price Each
-------------	------	--------	----------	-----------	------------

Stub Saddle (continued)

IPS O.D. x Socket Schedule 80

3965-914	24X14	1	0	400	509.55
3965-916	24X16	1	0	400	697.43
3965-918	24X18	1	0	400	786.46
3965-920	24X20	1	0	400	885.16

Schedule 80 PVC Industrial Products & Accessories

Clamp-On Saddles

Part Number	Size	Hole Saw Dia	Std Pk	Mstr Ctn	Prod Code	Price Each
-------------	------	--------------	--------	----------	-----------	------------

Clamp-On Saddle x Socket Single Outlet PVC Gray



with FKM O-ring Seal & Zinc-Plated Hardware

2" - 4" 235, 6" 200, 8"-12" 150 psi @ 73°F (23°C)

866V-247	2X1/2	3/4	1	10	086	35.79
866V-248	2X3/4	7/8	1	10	086	35.79
866V-249	2X1	1-1/8	1	10	086	35.79
866V-250	2X1-1/4	1-1/2	1	10	086	35.79
866V-251	2X1-1/2	1-1/2	1	10	086	35.79
866V-291	2-1/2X1-1/2	1-3/4	1	10	086	49.56
866V-333 ¹	3X1/2	7/8	1	10	086	49.56
866V-334	3X3/4	7/8	1	10	086	49.56
866V-335	3X1	1-1/8	1	10	086	49.56
866V-336 ¹	3X1-1/4	2-1/4	1	10	086	49.56
866V-337 ¹	3X1-1/2	2-1/4	1	10	086	49.56
866V-338	3X2	2-1/4	1	10	086	49.56
866V-415 ¹	4X1/2	1-1/8	1	10	086	59.41
866V-416 ¹	4X3/4	1-1/8	1	10	086	59.41
866V-417	4X1	1-1/8	1	8	086	59.41
866V-418 ¹	4X1-1/4	1-3/4	1	8	086	59.41
866V-419	4X1-1/2	1-3/4	1	8	086	59.41
866V-420	4X2	2-1/4	1	8	086	59.41
866V-421 ¹	4X2-1/2	3	1	4	086	64.80
866V-422	4X3	3	1	4	086	70.52
866V-523 ¹	6X1/2	1-1/8	1	4	086	98.98
866V-524 ¹	6X3/4	1-1/8	1	4	086	98.98
866V-525	6X1	1-1/8	1	4	086	98.98
866V-526 ¹	6X1-1/4	2-1/4	1	4	086	98.98
866V-527 ¹	6X1-1/2	2-1/4	1	4	086	98.98
866V-528	6X2	2-1/4	1	4	086	98.98
866V-529 ¹	6X2-1/2	3	1	4	086	124.54
866V-530	6X3	3	1	4	086	129.66
866V-532	6X4	4	1	4	086	136.56
866V-573 ¹	8X1/2	4	1	0	086	212.14
866V-574 ¹	8X3/4	4	1	0	086	212.14
866V-575 ¹	8X1	4	1	0	086	212.14
866V-576 ¹	8X1-1/4	4	1	0	086	212.14
866V-577 ¹	8X1-1/2	4	1	0	086	212.14
866V-578 ¹	8 X 2	4	1	0	086	212.14
866V-579 ¹	8X2-1/2	4	1	0	086	222.55
866V-580 ¹	8X3	4	1	0	086	233.76
866V-582	8X4	4	1	0	086	247.79
866V-585	8X6	6	1	0	086	275.03
866V-624	10X4	4	1	0	086	327.19
866V-626	10X6	6	1	0	086	376.24
866V-664	12X4	4	1	0	086	410.32
866V-666	12X6	6	1	0	086	475.85

¹Outlet-sized with Bushing

Clamp-On Saddle x Socket Single Outlet PVC Gray



with FKM O-ring Seal & SS Hardware

2" - 4" 235, 6" 200, 8"-12" 150 psi @ 73°F (23°C)

866SV-247	2X1/2	3/4	1	10	086	60.99
866SV-248	2X3/4	7/8	1	10	086	60.99
866SV-249	2X1	1-1/8	1	10	086	60.99
866SV-250	2X1-1/4	1-1/2	1	10	086	60.99
866SV-251	2X1-1/2	1-1/2	1	10	086	60.99
866SV-291	2-1/2X1-1/2	1-3/4	1	10	086	81.75
866SV-333 ¹	3X1/2	7/8	1	10	086	81.75
866SV-334	3X3/4	7/8	1	10	086	81.75
866SV-335	3X1	1-1/8	1	10	086	81.75
866SV-336 ¹	3X1-1/4	2-1/4	1	10	086	81.75
866SV-337 ¹	3X1-1/2	2-1/4	1	10	086	81.75
866SV-338	3X2	2-1/4	1	10	086	81.75

Part Number	Size	Hole Saw Dia	Std Pk	Mstr Ctn	Prod Code	Price Each
-------------	------	--------------	--------	----------	-----------	------------

Clamp-On Saddle x Socket Single Outlet PVC Gray

(continued)

with FKM O-ring Seal & SS Hardware

866SV-415 ¹	4X1/2	1-1/8	1	10	086	105.19
866SV-416 ¹	4X3/4	1-1/8	1	10	086	105.19
866SV-417	4X1	1-1/8	1	8	086	105.19
866SV-418 ¹	4X1-1/4	1-3/4	1	8	086	105.19
866SV-419	4X1-1/2	1-3/4	1	8	086	105.19
866SV-420	4X2	2-1/4	1	8	086	105.19
866SV-421 ¹	4X2-1/2	3	1	4	086	109.36
866SV-422	4X3	3	1	4	086	115.00
866SV-523 ¹	6X1/2	1-1/8	1	4	086	155.87
866SV-524 ¹	6X3/4	1-1/8	1	4	086	155.87
866SV-525	6X1	1-1/8	1	4	086	155.87
866SV-526 ¹	6X1-1/4	2-1/4	1	4	086	155.87
866SV-527 ¹	6X1-1/2	2-1/4	1	4	086	155.87
866SV-528	6X2	2-1/4	1	4	086	155.87
866SV-529 ¹	6X2-1/2	3	1	4	086	161.93
866SV-530	6X3	3	1	4	086	167.38
866SV-532	6X4	4	1	4	086	173.08
866SV-573 ¹	8X1/2	4	1	0	086	284.64
866SV-574 ¹	8X3/4	4	1	0	086	284.64
866SV-575 ¹	8 X 1	4	1	0	086	284.64
866SV-576 ¹	8X1-1/4	4	1	0	086	284.64
866SV-577 ¹	8X1-1/2	4	1	0	086	284.64
866SV-578 ¹	8 X 2	4	1	0	086	284.64
866SV-579 ¹	8X2-1/2	4	1	0	086	313.07
866SV-580 ¹	8X3	4	1	0	086	328.72
866SV-582	8X4	4	1	0	086	348.46
866SV-585	8X6	6	1	0	086	386.76
866SV-624	10X4	4	1	0	086	460.37
866SV-626	10X6	6	1	0	086	529.27
866SV-664	12X4	4	1	0	086	576.87
866SV-666	12X6	6	1	0	086	669.23

¹Outlet-sized with Bushing

Clamp-On Saddle x Socket Single Outlet PVC Gray



with EPDM O-ring Seal & Zinc-Plated Hardware

2" - 4" 235, 6" 200, 8"-12" 150 psi @ 73°F (23°C)

866-247	2X1/2	3/4	1	10	086	34.11
866-248	2X3/4	7/8	1	10	086	34.11
866-249	2X1	1-1/8	1	10	086	34.11
866-250	2X1-1/4	1-1/2	1	10	086	34.11
866-251	2X1-1/2	1-1/2	1	10	086	34.11
866-291	2-1/2X1-1/2	1-3/4	1	10	086	45.54
866-333 ¹	3X1/2	7/8	1	10	086	45.54
866-334	3X3/4	7/8	1	10	086	45.54
866-335	3X1	1-1/8	1	10	086	45.54
866-336 ¹	3X1-1/4	2-1/4	1	10	086	45.54
866-337 ¹	3X1-1/2	2-1/4	1	10	086	45.54
866-338	3X2	2-1/4	1	10	086	45.54
866-415 ¹	4X1/2	1-1/8	1	10	086	55.35
866-416 ¹	4X3/4	1-1/8	1	10	086	55.35
866-417	4X1	1-1/8	1	10	086	55.35
866-418 ¹	4X1-1/4	1-3/4	1	8	086	55.35
866-419	4X1-1/2	1-3/4	1	8	086	55.35
866-420	4X2	2-1/4	1	8	086	55.35
866-421 ¹	4X2-1/2	3	1	4	086	60.46
866-422	4X3	3	1	4	086	66.17
866-523 ¹	6X1/2	1-1/8	1	4	086	92.25
866-524 ¹	6X3/4	1-1/8	1	4	086	92.25
866-525	6X1	1-1/8	1	4	086	92.25
866-526 ¹	6X1-1/4	2-1/4	1	4	086	92.25
866-527 ¹	6X1-1/2	2-1/4	1	4	086	92.25

Schedule 80 PVC Industrial Products & Accessories

Clamp-On Saddles

Part Number	Size	Hole Saw Dia	Std Pk	Mstr Ctn	Prod Code	Price Each
-------------	------	--------------	--------	----------	-----------	------------

Clamp-On Saddle x Socket Single Outlet PVC Gray

(continued)

with EPDM O-ring Seal & Zinc-Plated Hardware

866-528	6X2	2-1/4	1	4	086	92.25
866-529 ¹	6X2-1/2	3	1	4	086	100.69
866-530	6X3	3	1	4	086	110.73
866-532	6X4	4	1	4	086	115.40
866-573 ¹	8X1/2	4	1	0	086	177.45
866-574 ¹	8X3/4	4	1	0	086	177.45
866-575 ¹	8X1	4	1	0	086	177.45
866-576 ¹	8X1-1/4	4	1	0	086	177.45
866-577 ¹	8X1-1/2	4	1	0	086	177.45
866-578 ¹	8 X 2	4	1	0	086	177.45
866-579 ¹	8X2-1/2	4	1	0	086	195.20
866-580 ¹	8X3	4	1	0	086	204.98
866-582	8X4	4	1	0	086	217.09
866-585	8X6	6	1	0	086	241.19
866-621 ¹	10X2	4	1	0	086	287.55
866-624	10X4	4	1	0	086	287.55
866-626	10X6	6	1	0	086	329.02
866-664	12X4	4	1	0	086	359.60
866-666	12X6	6	1	0	086	415.92

¹Outlet-sized with Bushing

Clamp-On Saddle x Socket Single Outlet PVC Gray

with EPDM O-ring Seal & SS Hardware

2" - 4" 235, 6" 200, 8"-12" 150 psi @ 73°F (23°C)



866S-247	2X1/2	3/4	1	10	086	54.64
866S-248	2X3/4	7/8	1	10	086	54.64
866S-249	2X1	1-1/8	1	10	086	54.64
866S-250	2X1-1/4	1-1/2	1	10	086	54.64
866S-251	2X1-1/2	1-1/2	1	10	086	54.64
866S-291	2-1/2X1-1/2	1-3/4	1	10	086	73.45
866S-333 ¹	3X1/2	7/8	1	10	086	73.45
866S-334	3X3/4	7/8	1	10	086	73.45
866S-335	3X1	1-1/8	1	10	086	73.45
866S-336 ¹	3X1-1/4	2-1/4	1	10	086	73.45
866S-337 ¹	3X1-1/2	2-1/4	1	10	086	73.45
866S-338	3X2	2-1/4	1	10	086	73.45
866S-415 ¹	4X1/2	1-1/8	1	10	086	94.56
866S-416 ¹	4X3/4	1-1/8	1	10	086	94.56
866S-417	4X1	1-1/8	1	8	086	94.56
866S-418 ¹	4X1-1/4	1-3/4	1	8	086	94.56
866S-419	4X1-1/2	1-3/4	1	8	086	94.56
866S-420	4X2	2-1/4	1	8	086	94.56
866S-421 ¹	4X2-1/2	3	1	4	086	97.89
866S-422	4X3	3	1	4	086	103.67
866S-523 ¹	6X1/2	1-1/8	1	4	086	142.31
866S-524 ¹	6X3/4	1-1/8	1	4	086	142.31
866S-525	6X1	1-1/8	1	4	086	142.31
866S-526 ¹	6X1-1/4	2-1/4	1	4	086	142.31
866S-527 ¹	6X1-1/2	2-1/4	1	4	086	142.31
866S-528	6X2	2-1/4	1	4	086	142.31
866S-529 ¹	6X2-1/2	3	1	4	086	149.06
866S-530	6X3	3	1	4	086	154.15
866S-532	6X4	4	1	4	086	159.92
866S-573 ¹	8X1/2	4	1	0	086	267.43
866S-574 ¹	8X3/4	4	1	0	086	267.43
866S-575	8X1	4	1	0	086	267.43
866S-576 ¹	8X1-1/4	4	1	0	086	267.43
866S-577 ¹	8X1-1/2	4	1	0	086	267.43
866S-578 ¹	8 X 2	4	1	0	086	267.43
866S-579 ¹	8X2-1/2	4	1	0	086	294.24
866S-580 ¹	8X3	4	1	0	086	309.00

Part Number	Size	Hole Saw Dia	Std Pk	Mstr Ctn	Prod Code	Price Each
-------------	------	--------------	--------	----------	-----------	------------

Clamp-On Saddle x Socket Single Outlet PVC Gray

(continued)

with EPDM O-ring Seal & SS Hardware

866S-582	8X4	4	1	0	086	326.09
866S-585	8X6	6	1	0	086	363.58
866S-624	10X4	4	1	0	086	432.77
866S-626	10X6	6	1	0	086	497.57
866S-664	12X4	4	1	0	086	542.48
866S-666	12X6	6	1	0	086	629.22

¹Outlet-sized with Bushing

Clamp-On Saddle x SR Thread Single Outlet PVC Gray

with FKM O-ring Seal & Zinc-Plated Hardware

2" - 4" 235, 6" 200, 8"-12" 150 psi @ 73°F (23°C)



867V-247SR	2X1/2	3/4	1	10	086	40.02
867V-248SR	2X3/4	7/8	1	10	086	40.02
867V-249SR	2X1	1-1/8	1	10	086	40.02
867V-250SR	2X1-1/4	1-1/2	1	10	086	40.02
867V-251SR	2X1-1/2	1-1/2	1	10	086	40.02
867V-291SR	2-1/2X1-1/2	1-3/4	1	10	086	55.77
867V-333SR ¹	3X1/2	7/8	1	10	086	55.77
867V-334SR	3X3/4	7/8	1	10	086	55.77
867V-335SR	3X1	1-1/8	1	10	086	55.77
867V-336SR ¹	3X1-1/4	2-1/4	1	10	086	55.77
867V-337SR ¹	3X1-1/2	2-1/4	1	10	086	55.77
867V-338SR	3X2	2-1/4	1	10	086	55.77
867V-415SR ¹	4X1/2	1-1/8	1	10	086	69.69
867V-416SR ¹	4X3/4	1-1/8	1	10	086	69.69
867V-417SR	4X1	1-1/8	1	8	086	69.69
867V-418SR ¹	4X1-1/4	1-3/4	1	8	086	69.69
867V-419SR	4X1-1/2	1-3/4	1	8	086	69.69
867V-420SR	4X2	2-1/4	1	8	086	69.69
867V-421SR ¹	4X2-1/2	3	1	4	086	75.06
867V-422SR	4X3	3	1	4	086	79.45
867V-523SR ¹	6X1/2	1-1/8	1	4	086	116.16
867V-524SR ¹	6X3/4	1-1/8	1	4	086	116.16
867V-525SR	6X1	1-1/8	1	4	086	116.16
867V-526SR ¹	6X1-1/4	2-1/4	1	4	086	116.16
867V-527SR ¹	6X1-1/2	2-1/4	1	4	086	116.16
867V-528SR	6X2	2-1/4	1	4	086	116.16
867V-529SR ¹	6X2-1/2	3	1	4	086	148.93
867V-530SR	6X3	3	1	4	086	154.77
867V-532SR	6X4	4	1	4	086	161.46
867V-573SR ¹	8X1/2	4	1	0	086	234.13
867V-574SR ¹	8X3/4	4	1	0	086	234.13
867V-575SR ¹	8X1	4	1	0	086	234.13
867V-576SR ¹	8X1-1/4	4	1	0	086	234.13
867V-577SR ¹	8X1-1/2	4	1	0	086	234.13
867V-578SR ¹	8X2	4	1	0	086	234.13
867V-579SR ¹	8X2-1/2	4	1	0	086	257.48
867V-580SR ¹	8X3	4	1	0	086	270.40
867V-582SR	8X4	4	1	0	086	286.64
867V-585SR	8X6	4	1	0	086	319.04
867V-624SR	10X4	4	1	0	086	341.12
867V-626SR	10X6	6	1	0	086	392.21
867V-664SR	12X4	4	1	0	086	427.60
867V-666SR	12X6	6	1	0	086	495.95

¹Outlet-sized with Bushing

Clamp-On Saddle x SR Thread Single Outlet PVC Gray

with FKM O-ring Seal & SS Hardware

2" - 4" 235, 6" 200, 8"-12" 150 psi @ 73°F (23°C)



867SV-245SR ¹	2X1/4	1-1/8	1	10	086	74.09
--------------------------	-------	-------	---	----	-----	-------

Schedule 80 PVC Industrial Products & Accessories

Clamp-On Saddles

Part Number	Size	Hole Saw Dia	Std Pk	Mstr Ctn	Prod Code	Price Each
-------------	------	--------------	--------	----------	-----------	------------

Clamp-On Saddle x SR Thread Single Outlet PVC Gray

(continued)

with FKM O-ring Seal & SS Hardware

867SV-247SR	2X1/2	3/4	1	10	086	68.04
867SV-248SR	2X3/4	7/8	1	10	086	68.04
867SV-249SR	2X1	1-1/8	1	10	086	68.04
867SV-250SR	2X1-1/4	1-1/2	1	10	086	68.04
867SV-251SR	2X1-1/2	1-1/2	1	10	086	68.04
867SV-291SR	2-1/2X1-1/2	1-3/4	1	10	086	90.97
867SV-331SR ¹	3X1/4	1-1/8	1	10	086	90.97
867SV-333SR ¹	3X1/2	7/8	1	10	086	90.97
867SV-334SR	3X3/4	7/8	1	10	086	90.97
867SV-335SR	3X1	1-1/8	1	10	086	90.97
867SV-336SR ¹	3X1-1/4	2-1/4	1	10	086	90.97
867SV-337SR ¹	3X1-1/2	2-1/4	1	10	086	90.97
867SV-338SR	3X2	2-1/4	1	10	086	90.97
867SV-413SR ¹	4X1/4	1-1/8	1	8	086	116.07
867SV-415SR ¹	4X1/2	1-1/8	1	10	086	114.86
867SV-416SR ¹	4X3/4	1-1/8	1	10	086	114.86
867SV-417SR	4X1	1-1/8	1	8	086	114.86
867SV-418SR ¹	4X1-1/4	1-3/4	1	8	086	114.86
867SV-419SR	4X1-1/2	1-3/4	1	8	086	114.86
867SV-420SR	4X2	2-1/4	1	8	086	114.86
867SV-421SR ¹	4X2-1/2	3	1	4	086	118.67
867SV-422SR	4X3	3	1	4	086	124.73
867SV-521SR ¹	6X1/4	1-1/8	1	8	086	172.38
867SV-523SR ¹	6X1/2	1-1/8	1	4	086	168.71
867SV-524SR ¹	6X3/4	1-1/8	1	4	086	168.71
867SV-525SR	6X1	1-1/8	1	4	086	168.71
867SV-526SR ¹	6X1-1/4	2-1/4	1	4	086	168.71
867SV-527SR ¹	6X1-1/2	2-1/4	1	4	086	168.71
867SV-528SR	6X2	2-1/4	1	4	086	168.71
867SV-529SR ¹	6X2-1/2	3	1	4	086	182.78
867SV-530SR	6X3	3	1	4	086	191.21
867SV-532SR	6X4	4	1	4	086	197.96
867SV-571SR ¹	8X1/4	4	1	0	086	313.61
867SV-573SR ¹	8X1/2	4	1	0	086	301.49
867SV-574SR ¹	8X3/4	4	1	0	086	301.49
867SV-575SR ¹	8X1	4	1	0	086	301.49
867SV-576SR ¹	8X1-1/4	4	1	0	086	301.49
867SV-577SR ¹	8X1-1/2	4	1	0	086	301.49
867SV-578SR ¹	8X2	4	1	0	086	301.49
867SV-579SR ¹	8X2-1/2	4	1	0	086	331.63
867SV-580SR ¹	8X3	4	1	0	086	348.21
867SV-582SR	8X4	4	1	0	086	369.11
867SV-585SR	8X6	6	1	0	086	404.49
867SV-624SR	10X4	4	1	0	086	439.08
867SV-626SR	10X6	6	1	0	086	505.21
867SV-664SR	12X4	4	1	0	086	550.64
867SV-666SR	12X6	6	1	0	086	638.65

¹Outlet-sized with Bushing

Clamp-On Saddle x SR Thread Single Outlet PVC Gray



with EPDM O-ring Seal & Zinc-Plated Hardware

2" - 4" 235, 6" 200, 8"-12" 150 psi @ 73°F (23°C)

867-247SR	2X1/2	3/4	1	10	086	35.59
867-248SR	2X3/4	7/8	1	10	086	35.59
867-249SR	2X1	1-1/8	1	10	086	35.59
867-250SR	2X1-1/4	1-1/2	1	10	086	35.59
867-251SR	2X1-1/2	1-1/2	1	10	086	35.59
867-291SR	2-1/2X1-1/2	1-3/4	1	10	086	48.63
867-333SR ¹	3X1/2	7/8	1	10	086	48.63
867-334SR	3X3/4	7/8	1	10	086	48.63
867-335SR	3X1	1-1/8	1	10	086	48.63

Part Number	Size	Hole Saw Dia	Std Pk	Mstr Ctn	Prod Code	Price Each
-------------	------	--------------	--------	----------	-----------	------------

Clamp-On Saddle x SR Thread Single Outlet PVC Gray

(continued)

with EPDM O-ring Seal & Zinc-Plated Hardware

867-336SR ¹	3X1-1/4	2-1/4	1	10	086	48.63
867-337SR ¹	3X1-1/2	2-1/4	1	10	086	48.63
867-338SR	3X2	2-1/4	1	10	086	48.63
867-415SR ¹	4X1/2	1-1/8	1	10	086	61.27
867-416SR ¹	4X3/4	1-1/8	1	10	086	61.27
867-417SR	4X1	1-1/8	1	8	086	61.27
867-418SR ¹	4X1-1/4	1-3/4	1	8	086	61.27
867-419SR ¹	4X1-1/2	1-3/4	1	8	086	61.27
867-420SR	4X2	2-1/4	1	8	086	61.27
867-421SR ¹	4X2-1/2	3	1	4	086	62.72
867-422SR	4X3	3	1	4	086	71.87
867-523SR ¹	6X1/2	1-1/8	1	4	086	102.09
867-524SR ¹	6X3/4	1-1/8	1	4	086	102.09
867-525SR	6X1	1-1/8	1	4	086	102.09
867-526SR ¹	6X1-1/4	2-1/4	1	4	086	102.09
867-527SR ¹	6X1-1/2	2-1/4	1	4	086	102.09
867-528SR	6X2	2-1/4	1	4	086	102.09
867-529SR ¹	6X2-1/2	3	1	4	086	126.82
867-530SR	6X3	3	1	4	086	136.54
867-532SR	6X4	4	1	4	086	142.97
867-573SR	8X1/2	4	1	0	086	216.09
867-574SR ¹	8X3/4	4	1	0	086	216.09
867-575SR	8X1	4	1	0	086	216.09
867-576SR ¹	8X1-1/4	4	1	0	086	216.09
867-577SR ¹	8X1-1/2	4	1	0	086	216.09
867-578SR ¹	8X2	4	1	0	086	216.09
867-579SR ¹	8X2-1/2	4	1	0	086	237.74
867-580SR ¹	8X3	4	1	0	086	249.52
867-582SR	8X4	4	1	0	086	264.56
867-585SR	8X6	6	1	0	086	304.68
867-624SR	10X4	4	1	0	086	314.71
867-626SR	10X6	4	1	0	086	361.95
867-664SR	12X4	4	1	0	086	394.36
867-666SR	12X6	6	1	0	086	457.74

¹Outlet-sized with Bushing

Clamp-On Saddle x SR Thread Single Outlet PVC Gray



with EPDM O-ring Seal & SS Hardware

2" - 4" 235, 6" 200, 8"-12" 150 psi @ 73°F (23°C)

867S-245SR ¹	2X1/4	1-1/8	1	10	086	68.04
867S-247SR	2X1/2	3/4	1	10	086	60.81
867S-248SR	2X3/4	7/8	1	10	086	60.81
867S-249SR	2X1	1-1/8	1	10	086	60.81
867S-250SR	2X1-1/4	1-1/2	1	10	086	60.81
867S-251SR	2X1-1/2	1-1/2	1	10	086	60.81
867S-291SR	2-1/2X1-1/2	1-3/4	1	10	086	81.76
867S-331SR ¹	3X1/4	1-1/8	1	10	086	90.44
867S-333SR ¹	3X1/2	7/8	1	10	086	81.76
867S-334SR	3X3/4	7/8	1	10	086	81.76
867S-335SR	3X1	1-1/8	1	10	086	81.76
867S-336SR ¹	3X1-1/4	2-1/4	1	10	086	81.76
867S-337SR ¹	3X1-1/2	2-1/4	1	10	086	81.76
867S-338SR	3X2	2-1/4	1	10	086	81.76
867S-413SR	4X1/4		1	8	086	106.41
867S-415SR ¹	4X1/2	1-1/8	1	10	086	102.94
867S-416SR ¹	4X3/4	1-1/8	1	10	086	102.94
867S-417SR	4X1	1-1/8	1	8	086	102.94
867S-418SR ¹	4X1-1/4	1-3/4	1	8	086	102.94
867S-419SR	4X1-1/2	1-3/4	1	8	086	102.94
867S-420SR	4X2	2-1/4	1	8	086	102.94
867S-421SR ¹	4X2-1/2	3	1	4	086	107.74

Schedule 80 PVC Industrial Products & Accessories

Clamp-On Saddles

Part Number	Size	Hole Saw Dia	Std Pk	Mstr Ctn	Prod Code	Price Each
-------------	------	--------------	--------	----------	-----------	------------

Clamp-On Saddle x SR Thread Single Outlet PVC Gray

(continued)

with EPDM O-ring Seal & SS Hardware

867S-422SR	4X3	3	1	4	086	116.13
867S-521SR ¹	6X1/4	1-1/8	1	8	086	163.28
867S-523SR ¹	6X1/2	1-1/8	1	4	086	148.81
867S-524SR ¹	6X3/4	1-1/8	1	4	086	148.81
867S-525SR	6X1	1-1/8	1	4	086	148.81
867S-526SR ¹	6X1-1/4	2-1/4	1	4	086	148.81
867S-527SR ¹	6X1-1/2	2-1/4	1	4	086	148.81
867S-528SR	6X2	2-1/4	1	4	086	148.81
867S-529SR ¹	6X2-1/2	3	1	4	086	169.87
867S-530SR	6X3	3	1	4	086	175.39
867S-532SR	6X4	4	1	4	086	182.68
867S-571SR ¹	8X1/4	4	1	0	086	322.40
867S-573SR ¹	8X1/2	4	1	0	086	275.94
867S-574SR ¹	8X3/4	4	1	0	086	275.94
867S-575SR ¹	8X1	4	1	0	086	275.94
867S-576SR ¹	8X1-1/4	4	1	0	086	275.94
867S-577SR ¹	8X1-1/2	4	1	0	086	275.94
867S-578SR ¹	8X2	4	1	0	086	275.94
867S-579SR ¹	8X2-1/2	4	1	0	086	307.82
867S-580SR ¹	8X3	4	1	0	086	325.31
867S-582SR	8X4	4	1	0	086	343.67
867S-585SR	8X6	6	1	0	086	360.79
867S-624SR	10X4	4	1	0	086	423.64
867S-626SR	10X6	6	1	0	086	445.43
867S-664SR	12X4	4	1	0	086	485.63
867S-666SR	12X6	6	1	0	086	563.31

¹Outlet-sized with Bushing

Clamp-On Saddle x Socket Double Outlet PVC Gray



with FKM O-ring Seal & Zinc-Plated Hardware

2" - 4" 235, 6" 200, 8"-12" 150 psi @ 73°F (23°C)

868V-247	2X1/2	3/4	1	10	086	44.35
868V-248	2X3/4	7/8	1	10	086	44.35
868V-249	2X1	1-1/8	1	10	086	44.35
868V-250	2X1-1/4	1-1/2	1	10	086	44.35
868V-251	2X1-1/2	1-1/2	1	10	086	44.35
868V-291	2-1/2X1-1/2	1-3/4	1	10	086	56.81
868V-333 ¹	3X1/2	7/8	1	10	086	56.81
868V-334	3X3/4	7/8	1	10	086	56.81
868V-335	3X1	1-1/8	1	10	086	56.81
868V-336 ¹	3X1-1/4	2-1/4	1	10	086	56.81
868V-337 ¹	3X1-1/2	2-1/4	1	10	086	56.81
868V-338	3X2	2-1/4	1	10	086	56.81
868V-415 ¹	4X1/2	1-1/8	1	10	086	75.84
868V-416 ¹	4X3/4	1-1/8	1	10	086	75.84
868V-417	4X1	1-1/8	1	8	086	75.84
868V-418 ¹	4X1-1/4	1-3/4	1	8	086	75.84
868V-419	4X1-1/2	1-3/4	1	8	086	75.84
868V-420	4X2	2-1/4	1	8	086	75.84
868V-421 ¹	4X2-1/2	3	1	4	086	82.44
868V-422	4X3	3	1	4	086	88.87
868V-523 ¹	6X1/2	1-1/8	1	4	086	124.52
868V-524 ¹	6X3/4	1-1/8	1	4	086	124.52
868V-525	6X1	1-1/8	1	4	086	124.52
868V-526 ¹	6X1-1/4	2-1/4	1	4	086	124.52
868V-527 ¹	6X1-1/2	2-1/4	1	4	086	124.52
868V-528	6X2	2-1/4	1	4	086	124.52
868V-529 ¹	6X2-1/2	3	1	4	086	129.28
868V-530	6X3	3	1	4	086	136.36
868V-532	6X4	4	1	4	086	145.74
868V-573 ¹	8X1/2	4	1	0	086	261.84

Part Number	Size	Hole Saw Dia	Std Pk	Mstr Ctn	Prod Code	Price Each
-------------	------	--------------	--------	----------	-----------	------------

Clamp-On Saddle x Socket Double Outlet PVC Gray

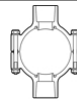
(continued)

with FKM O-ring Seal & Zinc-Plated Hardware

868V-574 ¹	8X3/4	4	1	0	086	261.84
868V-575 ¹	8X1	4	1	0	086	261.84
868V-576 ¹	8X1-1/4	4	1	0	086	261.84
868V-577 ¹	8X1-1/2	4	1	0	086	261.84
868V-578 ¹	8X2	4	1	0	086	261.84
868V-579 ¹	8X2-1/2	4	1	0	086	274.67
868V-580 ¹	8X3	4	1	0	086	288.62
868V-582	8X4	4	1	0	086	305.84
868V-585	8X6	6	1	0	086	339.49
868V-624	10X4	4	1	0	086	404.05
868V-626	10X6	6	1	0	086	426.40
868V-664	12X4	4	1	0	086	506.47
868V-666	12X6	6	1	0	086	587.39

¹Outlet-sized with Bushing

Clamp-On Saddle x Socket Double Outlet PVC Gray



with FKM O-ring Seal & SS Hardware

2" - 4" 235, 6" 200, 8"-12" 150 psi @ 73°F (23°C)

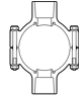
868SV-247	2X1/2	3/4	1	10	086	71.33
868SV-248	2X3/4	7/8	1	10	086	71.33
868SV-249	2X1	1-1/8	1	10	086	71.33
868SV-250	2X1-1/4	1-1/2	1	10	086	71.33
868SV-251	2X1-1/2	1-1/2	1	10	086	71.33
868SV-291	2-1/2X1-1/2	1-3/4	1	10	086	94.78
868SV-333 ¹	3X1/2	7/8	1	10	086	94.78
868SV-334	3X3/4	7/8	1	10	086	94.78
868SV-335	3X1	1-1/8	1	10	086	94.78
868SV-336 ¹	3X1-1/4	2-1/4	1	10	086	94.78
868SV-337 ¹	3X1-1/2	2-1/4	1	10	086	94.78
868SV-338	3X2	2-1/4	1	10	086	94.78
868SV-415 ¹	4X1/2	1-1/8	1	10	086	121.36
868SV-416 ¹	4X3/4	1-1/8	1	10	086	121.36
868SV-417	4X1	1-1/8	1	8	086	121.36
868SV-418 ¹	4X1-1/4	1-3/4	1	8	086	121.36
868SV-419	4X1-1/2	1-3/4	1	8	086	121.36
868SV-420	4X2	2-1/4	1	16	086	121.36
868SV-421 ¹	4X2-1/2	3	1	4	086	130.32
868SV-422	4X3	3	1	4	086	135.73
868SV-523 ¹	6X1/2	1-1/8	1	4	086	188.00
868SV-524 ¹	6X3/4	1-1/8	1	4	086	188.00
868SV-525	6X1	1-1/8	1	4	086	188.00
868SV-526 ¹	6X1-1/4	2-1/4	1	4	086	188.00
868SV-527 ¹	6X1-1/2	2-1/4	1	4	086	188.00
868SV-528	6X2	2-1/4	1	4	086	188.00
868SV-529 ¹	6X2-1/2	3	1	4	086	199.27
868SV-530	6X3	3	1	4	086	204.80
868SV-532	6X4	4	1	4	086	210.76
868SV-573 ¹	8X1/2	4	1	0	086	351.45
868SV-574 ¹	8X3/4	4	1	0	086	351.45
868SV-575 ¹	8X1	4	1	0	086	351.45
868SV-576 ¹	8X1-1/4	4	1	0	086	351.45
868SV-577 ¹	8X1-1/2	4	1	0	086	351.45
868SV-578 ¹	8X2	4	1	0	086	351.45
868SV-579 ¹	8X2-1/2	4	1	0	086	386.59
868SV-580 ¹	8X3	4	1	0	086	405.88
868SV-582	8X4	4	1	0	086	407.85
868SV-585	8X6	6	1	0	086	477.48
868SV-624	10X4	4	1	0	086	568.20
868SV-626	10X6	6	1	0	086	653.48
868SV-664	12X4	4	1	0	086	712.24
868SV-666	12X6	6	1	0	086	826.23

¹Outlet-sized with Bushing

Schedule 80 PVC Industrial Products & Accessories
Clamp-On Saddles

Part Number	Size	Hole Saw Dia	Std Pk	Mstr Ctn	Prod Code	Price Each
-------------	------	--------------	--------	----------	-----------	------------

Clamp-On Saddle x Socket Double Outlet PVC Gray
with EPDM O-ring Seal & Zinc-Plated Hardware



2" - 4" 235, 6" 200, 8"-12" 150 psi @ 73°F (23°C)

868-247	2X1/2	3/4	1	10	086	40.59
868-248	2X3/4	7/8	1	10	086	40.59
868-249	2X1	1-1/8	1	10	086	40.59
868-250	2X1-1/4	1-1/2	1	10	086	40.59
868-251	2X1-1/2	1-1/2	1	10	086	40.59
868-291	2-1/2X1-1/2	1-3/4	1	10	086	55.78
868-333 ¹	3X1/2	7/8	1	10	086	55.78
868-334	3X3/4	7/8	1	10	086	55.78
868-335	3X1	1-1/8	1	10	086	55.78
868-336 ¹	3X1-1/4	2-1/4	1	10	086	55.78
868-337 ¹	3X1-1/2	2-1/4	1	10	086	55.78
868-338	3X2	2-1/4	1	10	086	55.78
868-415 ¹	4X1/2	1-1/8	1	10	086	70.37
868-416 ¹	4X3/4	1-1/8	1	10	086	70.37
868-417	4X1	1-1/8	1	8	086	70.37
868-418 ¹	4X1-1/4	1-3/4	1	8	086	70.37
868-419	4X1-1/2	1-3/4	1	8	086	70.37
868-420	4X2	2-1/4	1	8	086	70.37
868-421 ¹	4X2-1/2	3	1	4	086	75.57
868-422	4X3	3	1	4	086	79.97
868-523 ¹	6X1/2	1-1/8	1	4	086	117.55
868-524 ¹	6X3/4	1-1/8	1	4	086	117.55
868-525	6X1	1-1/8	1	4	086	117.55
868-526 ¹	6X1-1/4	2-1/4	1	4	086	117.55
868-527 ¹	6X1-1/2	2-1/4	1	4	086	117.55
868-528	6X2	2-1/4	1	4	086	117.55
868-529 ¹	6X2-1/2	3	1	4	086	124.23
868-530	6X3	3	1	4	086	131.29
868-532	6X4	4	1	4	086	136.55
868-573 ¹	8X1/2	4	1	0	086	219.82
868-574 ¹	8X3/4	4	1	0	086	219.82
868-575 ¹	8X1	4	1	0	086	219.82
868-576 ¹	8X1-1/4	4	1	0	086	219.82
868-577 ¹	8X1-1/2	4	1	0	086	219.82
868-578 ¹	8X2	4	1	0	086	219.82
868-579 ¹	8X2-1/2	4	1	0	086	241.01
868-580 ¹	8X3	4	1	0	086	252.96
868-582	8X4	4	1	0	086	267.97
868-585	8X6	6	1	0	086	297.67
868-624	10X4	4	1	0	086	354.17
868-626	10X6	6	1	0	086	407.41
868-664	12X4	4	1	0	086	443.97
868-666	12X6	6	1	0	086	514.97

¹Outlet-sized with Bushing

Clamp-On Saddle x Socket Double Outlet PVC Gray



with EPDM O-ring Seal & SS Hardware

2" - 4" 235, 6" 200, 8"-12" 150 psi @ 73°F (23°C)

868S-247	2X1/2	3/4	1	10	086	61.87
868S-248	2X3/4	7/8	1	10	086	61.87
868S-249	2X1	1-1/8	1	10	086	61.87
868S-250	2X1-1/4	1-1/2	1	10	086	61.87
868S-251	2X1-1/2	1-1/2	1	10	086	61.87
868S-291	2-1/2X1-1/2	1-3/4	1	10	086	83.15
868S-333 ¹	3X1/2	7/8	1	10	086	83.15
868S-334	3X3/4	7/8	1	10	086	83.15
868S-335	3X1	1-1/8	1	10	086	83.15
868S-336 ¹	3X1-1/4	2-1/4	1	10	086	83.15
868S-337 ¹	3X1-1/2	2-1/4	1	10	086	83.15
868S-338	3X2	2-1/4	1	10	086	83.15

Part Number	Size	Hole Saw Dia	Std Pk	Mstr Ctn	Prod Code	Price Each
-------------	------	--------------	--------	----------	-----------	------------

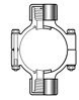
Clamp-On Saddle x Socket Double Outlet PVC Gray
(continued)

with EPDM O-ring Seal & SS Hardware

868S-415 ¹	4X1/2	1-1/8	1	10	086	107.07
868S-416 ¹	4X3/4	1-1/8	1	10	086	107.07
868S-417	4X1	1-1/8	1	8	086	107.07
868S-418 ¹	4X1-1/4	1-3/4	1	8	086	107.07
868S-419	4X1-1/2	1-3/4	1	8	086	107.07
868S-420	4X2	2-1/4	1	8	086	107.07
868S-421 ¹	4X2-1/2	3	1	4	086	116.19
868S-422	4X3	3	1	4	086	119.31
868S-523 ¹	6X1/2	1-1/8	1	4	086	178.44
868S-524 ¹	6X3/4	1-1/8	1	4	086	178.44
868S-525	6X1	1-1/8	1	4	086	178.44
868S-526 ¹	6X1-1/4	2-1/4	1	4	086	178.44
868S-527 ¹	6X1-1/2	2-1/4	1	4	086	178.44
868S-528	6X2	2-1/4	1	4	086	178.44
868S-529 ¹	6X2-1/2	3	1	4	086	184.48
868S-530	6X3	3	1	4	086	191.98
868S-532	6X4	4	1	4	086	199.62
868S-573 ¹	8X1/2	4	1	0	086	330.08
868S-574 ¹	8X3/4	4	1	0	086	330.08
868S-575 ¹	8X1	4	1	0	086	330.08
868S-576 ¹	8X1-1/4	4	1	0	086	330.08
868S-577 ¹	8X1-1/2	4	1	0	086	330.08
868S-578 ¹	8X2	4	1	0	086	330.08
868S-579 ¹	8X2-1/2	4	1	0	086	363.23
868S-580 ¹	8X3	4	1	0	086	381.51
868S-582	8X4	4	1	0	086	402.53
868S-585	8X6	6	1	0	086	480.14
868S-624	10X4	4	1	0	086	534.17
868S-626	10X6	6	1	0	086	614.28
868S-664	12X4	4	1	0	086	669.61
868S-666	12X6	6	1	0	086	776.61

¹Outlet-sized with Bushing

Clamp-On Saddle x SR Thread Double Outlet PVC Gray



with FKM O-ring Seal & Zinc-Plated Hardware

2" - 4" 235, 6" 200, 8"-12" 150 psi @ 73°F (23°C)

869V-247SR	2X1/2	3/4	1	10	086	49.35
869V-248SR	2X3/4	7/8	1	10	086	49.35
869V-249SR	2X1	1-1/8	1	10	086	49.35
869V-250SR	2X1-1/4	1-1/2	1	10	086	49.35
869V-251SR	2X1-1/2	1-1/2	1	10	086	49.35
869V-291SR	2-1/2X1-1/2	1-3/4	1	10	086	67.84
869V-333SR ¹	3X1/2	7/8	1	10	086	67.84
869V-334SR	3X3/4	7/8	1	10	086	67.84
869V-335SR	3X1	1-1/8	1	10	086	67.84
869V-336SR ¹	3X1-1/4	2-1/4	1	10	086	67.84
869V-337SR ¹	3X1-1/2	2-1/4	1	10	086	67.84
869V-338SR	3X2	2-1/4	1	10	086	67.84
869V-415SR ¹	4X1/2	1-1/8	1	10	086	84.25
869V-416SR ¹	4X3/4	1-1/8	1	10	086	84.25
869V-417SR	4X1	1-1/8	1	8	086	84.25
869V-418SR ¹	4X1-1/4	1-3/4	1	8	086	84.25
869V-419SR	4X1-1/2	1-3/4	1	8	086	84.25
869V-420SR	4X2	2-1/4	1	8	086	84.25
869V-421SR ¹	4X2-1/2	3	1	4	086	90.57
869V-422SR	4X3	3	1	4	086	95.69
869V-523SR ¹	6X1/2	1-1/8	1	4	086	142.69
869V-524SR ¹	6X3/4	1-1/8	1	4	086	142.69
869V-525SR	6X1	1-1/8	1	4	086	142.69
869V-526SR ¹	6X1-1/4	2-1/4	1	4	086	142.69
869V-527SR ¹	6X1-1/2	2-1/4	1	4	086	142.69

Schedule 80 PVC Industrial Products & Accessories

Clamp-On Saddles

Part Number	Size	Hole Saw Dia	Std Pk	Mstr Ctn	Prod Code	Price Each
-------------	------	--------------	--------	----------	-----------	------------

Clamp-On Saddle x SR Thread Double Outlet PVC Gray
(continued)

with FKM O-ring Seal & Zinc-Plated Hardware

869V-528SR	6X2	2-1/4	1	4	086	142.69
869V-529SR ¹	6X2-1/2	3	1	4	086	172.37
869V-530SR	6X3	3	1	4	086	182.16
869V-532SR	6X4	4	1	4	086	191.35
869V-573SR ¹	8X1/2	4	1	0	086	288.98
869V-574SR ¹	8X3/4	4	1	0	086	288.98
869V-575SR ¹	8X1	4	1	0	086	288.98
869V-576SR ¹	8X1-1/4	4	1	0	086	288.98
869V-577SR ¹	8X1-1/2	4	1	0	086	288.98
869V-578SR ¹	8X2	4	1	0	086	288.98
869V-579SR ¹	8X2-1/2	4	1	0	086	317.96
869V-580SR ¹	8X3	4	1	0	086	333.89
869V-582SR	8X4	4	1	0	086	353.99
869V-585SR	8X6	6	1	0	086	412.05
869V-624SR	10X4	4	1	0	086	421.18
869V-626SR	10X6	6	1	0	086	484.35
869V-664SR	12X4	4	1	0	086	527.98
869V-666SR	12X6	6	1	0	086	614.36

¹Outlet-sized with Bushing

Clamp-On Saddle x SR Thread Double Outlet PVC Gray



with FKM O-ring Seal & SS Hardware

2" - 4" 235, 6" 200, 8"-12" 150 psi @ 73°F (23°C)

869SV-247SR	2X1/2	3/4	1	10	086	79.34
869SV-248SR	2X3/4	7/8	1	10	086	79.34
869SV-249SR	2X1	1-1/8	1	10	086	79.34
869SV-250SR	2X1-1/4	1-1/2	1	10	086	79.34
869SV-251SR	2X1-1/2	1-1/2	1	10	086	79.34
869SV-291SR	2-1/2X1-1/2	1-3/4	1	10	086	105.25
869SV-333SR ¹	3X1/2	7/8	1	10	086	105.25
869SV-335SR	3X1	1-1/8	1	10	086	105.25
869SV-334SR	3X3/4	7/8	1	10	086	105.25
869SV-336SR ¹	3X1-1/4	2-1/4	1	10	086	105.25
869SV-337SR ¹	3X1-1/2	2-1/4	1	10	086	105.25
869SV-338SR	3X2	2-1/4	1	10	086	105.25
869SV-415SR ¹	4X1/2	1-1/8	1	10	086	132.34
869SV-416SR ¹	4X3/4	1-1/8	1	10	086	132.34
869SV-417SR	4X1	1-1/8	1	8	086	132.34
869SV-418SR ¹	4X1-1/4	1-3/4	1	8	086	132.34
869SV-419SR	4X1-1/2	1-3/4	1	8	086	132.34
869SV-420SR	4X2	2-1/4	1	8	086	132.34
869SV-421SR ¹	4X2-1/2	3	1	4	086	139.37
869SV-422SR	4X3	3	1	4	086	146.48
869SV-523SR ¹	6X1/2	1-1/8	1	4	086	220.47
869SV-524SR ¹	6X3/4	1-1/8	1	4	086	220.47
869SV-525SR	6X1	1-1/8	1	4	086	220.47
869SV-526SR ¹	6X1-1/4	2-1/4	1	4	086	220.47
869SV-527SR ¹	6X1-1/2	2-1/4	1	4	086	220.47
869SV-528SR	6X2	2-1/4	1	4	086	220.47
869SV-529SR ¹	6X2-1/2	3	1	4	086	236.05
869SV-530SR	6X3	3	1	4	086	251.08
869SV-532SR	6X4	4	1	4	086	257.61
869SV-573SR ¹	8X1/2	4	1	0	086	372.27
869SV-574SR ¹	8X3/4	4	1	0	086	372.27
869SV-575SR ¹	8X1	4	1	0	086	372.27
869SV-576SR ¹	8X1-1/4	4	1	0	086	372.27
869SV-577SR ¹	8X1-1/2	4	1	0	086	372.27
869SV-578SR ¹	8X2	4	1	0	086	372.27
869SV-579SR ¹	8X2-1/2	4	1	0	086	409.40
869SV-580SR ¹	8X3	4	1	0	086	429.86
869SV-582SR	8X4	4	1	0	086	455.76

Part Number	Size	Hole Saw Dia	Std Pk	Mstr Ctn	Prod Code	Price Each
-------------	------	--------------	--------	----------	-----------	------------

Clamp-On Saddle x SR Thread Double Outlet PVC Gray
(continued)

with FKM O-ring Seal & SS Hardware

869SV-585SR	8X6	6	1	0	086	497.67
869SV-624SR	10X4	4	1	0	086	542.31
869SV-626SR	10X6	6	1	0	086	623.69
869SV-664SR	12X4	4	1	0	086	679.73
869SV-666SR	12X6	6	1	0	086	788.57

¹Outlet-sized with Bushing

Clamp-On Saddle x SR Thread Double Outlet PVC Gray



with EPDM O-ring Seal & Zinc-Plated Hardware

2" - 4" 235, 6" 200, 8"-12" 150 psi @ 73°F (23°C)

869-247SR	2X1/2	3/4	1	10	086	44.21
869-248SR	2X3/4	7/8	1	10	086	44.21
869-249SR	2X1	1-1/8	1	10	086	44.21
869-250SR	2X1-1/4	1-1/2	1	10	086	44.21
869-251SR	2X1-1/2	1-1/2	1	10	086	44.21
869-291SR	2-1/2X1-1/2	1-3/4	1	10	086	59.54
869-333SR ¹	3X1/2	7/8	1	10	086	59.54
869-334SR	3X3/4	7/8	1	10	086	59.54
869-335SR	3X1	1-1/8	1	10	086	59.54
869-336SR ¹	3X1-1/4	1-1/8	1	10	086	59.54
869-337SR ¹	3X1-1/2	2-1/4	1	10	086	59.54
869-338SR	3X2	2-1/4	1	10	086	59.54
869-415SR ¹	4X1/2	1-1/8	1	10	086	74.44
869-416SR ¹	4X3/4	1-1/8	1	10	086	74.44
869-417SR	4X1	1-1/8	1	8	086	74.44
869-418SR ¹	4X1-1/4	1-3/4	1	8	086	74.44
869-419SR	4X1-1/2	1-3/4	1	8	086	74.44
869-420SR	4X2	2-1/4	1	8	086	74.44
869-421SR ¹	4X2-1/2	3	1	4	086	81.41
869-422SR	4X3	3	1	4	086	86.41
869-523SR ¹	6X1/2	1-1/8	1	4	086	124.05
869-524SR ¹	6X3/4	1-1/8	1	4	086	124.05
869-525SR	6X1	1-1/8	1	4	086	124.05
869-526SR ¹	6X1-1/4	2-1/4	1	4	086	124.05
869-527SR ¹	6X1-1/2	2-1/4	1	4	086	124.05
869-528SR	6X2	2-1/4	1	4	086	124.05
869-529SR ¹	6X2-1/2	3	1	4	086	153.85
869-530SR	6X3	3	1	4	086	162.93
869-532SR	6X4	4	1	4	086	181.55
869-573SR ¹	8X1/2	4	1	0	086	266.72
869-574SR ¹	8X3/4	4	1	0	086	266.72
869-575SR ¹	8X1	4	1	0	086	266.72
869-576SR ¹	8X1-1/4	4	1	0	086	266.72
869-577SR ¹	8X1-1/2	4	1	0	086	266.72
869-578SR ¹	8X2	4	1	0	086	266.72
869-579SR ¹	8X2-1/2	4	1	0	086	293.52
869-580SR ¹	8X3	4	1	0	086	307.82
869-582SR	8X4	4	1	0	086	326.46
869-585SR	8X6	6	1	0	086	368.82
869-624SR	10X4	4	1	0	086	388.38
869-626SR	10X6	6	1	0	086	446.71
869-664SR	12X4	4	1	0	086	487.08
869-666SR	12X6	6	1	0	086	564.96

¹Outlet-sized with Bushing

Clamp-On Saddle x SR Thread Double Outlet PVC Gray



with EPDM O-ring Seal & SS Hardware

2" - 4" 235, 6" 200, 8"-12" 150 psi @ 73°F (23°C)

869S-247SR	2X1/2	3/4	1	10	086	71.15
869S-248SR	2X3/4	7/8	1	10	086	71.15

Schedule 80 PVC Industrial Products & Accessories

Clamp-On Saddles & Hot-Tap Saddles

Clamp-On Saddles

Part Number	Size	Hole Saw Dia	Std Pk	Mstr Ctn	Prod Code	Price Each
Clamp-On Saddle x SR Thread Double Outlet PVC Gray (continued) with EPDM O-ring Seal & SS Hardware						
869S-249SR	2X1	1-1/8	1	10	086	71.15
869S-250SR	2X1-1/4	1-1/2	1	10	086	71.15
869S-251SR	2X1-1/2	1-1/2	1	10	086	71.15
869S-291SR	2-1/2X1-1/2	1-3/4	1	10	086	94.85
869S-333SR ¹	3X1/2	7/8	1	10	086	94.85
869S-334SR	3X3/4	7/8	1	10	086	94.85
869S-335SR	3X1	1-1/8	1	10	086	94.85
869S-336SR ¹	3X1-1/4	2-1/4	1	10	086	94.85
869S-337SR ¹	3X1-1/2	2-1/4	1	10	086	94.85
869S-338SR	3X2	2-1/4	1	10	086	94.85
869S-415SR ¹	4X1/2	1-1/8	1	10	086	118.82
869S-416SR ¹	4X3/4	1-1/8	1	10	086	118.82
869S-417SR	4X1	1-1/8	1	8	086	118.82
869S-418SR ¹	4X1-1/4	1-3/4	1	8	086	118.82
869S-419SR	4X1-1/2	1-3/4	1	8	086	118.82
869S-420SR	4X2	2-1/4	1	8	086	118.82
869S-421SR ¹	4X2-1/2	3	1	4	086	126.94
869S-422SR	4X3	3	1	4	086	132.62
869S-523SR ¹	6X1/2	1-1/8	1	4	086	197.96
869S-524SR ¹	6X3/4	1-1/8	1	4	086	197.96
869S-525SR	6X1	1-1/8	1	4	086	197.96
869S-526SR ¹	6X1-1/4	2-1/4	1	4	086	197.96

Part Number	Size	Hole Saw Dia	Std Pk	Mstr Ctn	Prod Code	Price Each
Clamp-On Saddle x SR Thread Double Outlet PVC Gray (continued) with EPDM O-ring Seal & SS Hardware						
869S-527SR ¹	6X1-1/2	2-1/4	1	4	086	197.96
869S-528SR	6X2	2-1/4	1	4	086	197.96
869S-529SR ¹	6X2-1/2	3	1	4	086	207.74
869S-530SR	6X3	3	1	4	086	216.26
869S-532SR	6X4	4	1	4	086	223.13
869S-573SR ¹	8X1/2	4	1	0	086	340.68
869S-574SR ¹	8X3/4	4	1	0	086	340.68
869S-575SR ¹	8X1	4	1	0	086	340.68
869S-576SR ¹	8X1-1/4	4	1	0	086	340.68
869S-577SR ¹	8X1-1/2	4	1	0	086	340.68
869S-578SR ¹	8X2	4	1	0	086	340.68
869S-579SR ¹	8X2-1/2	4	1	0	086	357.61
869S-580SR ¹	8X3	4	1	0	086	379.17
869S-582SR	8X4	4	1	0	086	401.98
869S-585SR	8X6	6	1	0	086	441.26
869S-624SR	10X4	4	1	0	086	388.38
869S-626SR	10X6	6	1	0	086	550.11
869S-664SR	12X4	4	1	0	086	599.71
869S-666SR	12X6	6	1	0	086	695.58

¹Outlet-sized with Bushing

Hot-Tap Saddles

Part Number	Size	Std Pk	Mstr Ctn	Prod Code	Price Each
Hot-Tap Saddle PVC Gray EPDM Saddle x Socket (Spigot) Zinc Plated Bolts					
2" - 4" 235, 6" 200, 8" 150 psi @ 73°F (23°C)					
HT2-248	2X3/4 (1)	1	5	049	53.88
HT2-251	2X1-1/2 (2)	1	5	049	111.33
HT2-288	2-1/2X3/4 (1)	1	5	049	57.59
HT2-291	2-1/2X1-1/2 (2)	1	5	049	115.03
HT2-334	3X3/4 (1)	1	5	049	65.95
HT2-337	3X1-1/2 (2)	1	5	049	126.79
HT2-416	4X3/4 (1)	1	5	049	76.17
HT2-419	4X1-1/2 (2)	1	0	049	134.06
HT2-524	6X3/4 (1)	1	5	049	85.62
HT2-527	6X1-1/2 (2)	1	0	049	142.74
HT2-574	8X3/4 (1)	1	0	049	94.75
HT2-577	8X1-1/2 (2)	1	0	049	152.19
Not intended to convey or dispense water for human consumption through drinking or cooking					
Hot-Tap Saddle PVC Gray EPDM Saddle x Socket (Spigot) SS316 Bolts					
2" - 4" 235, 6" 200, 8" 150 psi @ 73°F (23°C)					
HT2S-248	2X3/4 (1)	1	5	049	83.91
HT2S-251	2X1-1/2 (2)	1	5	049	173.23
HT2S-288	2-1/2X3/4 (1)	1	5	049	89.63
HT2S-291	2-1/2X1-1/2 (2)	1	5	049	178.96
HT2S-334	3X3/4 (1)	1	5	049	102.66
HT2S-337	3X1-1/2 (2)	1	5	049	197.40
HT2S-416	4X3/4 (1)	1	5	049	118.59
HT2S-419	4X1-1/2 (2)	1	0	049	208.68
HT2S-524	6X3/4 (1)	1	5	049	133.15

Part Number	Size	Std Pk	Mstr Ctn	Prod Code	Price Each
Hot-Tap Saddle PVC Gray EPDM Saddle x Socket (Spigot) SS316 Bolts					
2" - 4" 235, 6" 200, 8" 150 psi @ 73°F (23°C)					
HT2S-527	6X1-1/2 (2)	1	0	049	221.99
HT2S-574	8X3/4 (1)	1	0	049	146.76
HT2S-577	8X1-1/2 (2)	1	0	049	235.94
Not intended to convey or dispense water for human consumption through drinking or cooking					
Hot-Tap Saddle PVC Gray FKM Saddle x Socket (Spigot) Zinc Plated Bolts					
2" - 4" 235, 6" 200, 8" 150 psi @ 73°F (23°C)					
HT3-248	2X3/4 (1)	1	5	049	58.53
HT3-251	2X1-1/2 (2)	1	5	049	120.77
HT3-288	2-1/2X3/4 (1)	1	5	049	62.55
HT3-291	2-1/2X1-1/2 (2)	1	5	049	124.79
HT3-334	3X3/4 (1)	1	5	049	71.52
HT3-337	3X1-1/2 (2)	1	5	049	137.78
HT3-416	4X3/4 (1)	1	5	049	82.67
HT3-419	4X1-1/2 (2)	1	0	049	143.73
HT3-524	6X3/4 (1)	1	5	049	92.89
HT3-527	6X1-1/2 (2)	1	0	049	154.51
HT3-574	8X3/4 (1)	1	0	049	103.25
HT3-577	8X1-1/2 (2)	1	0	049	182.98
Not intended to convey or dispense water for human consumption through drinking or cooking					
Hot-Tap Saddle PVC Gray FKM Saddle x Socket (Spigot) SS316 Bolts					
2" - 4" 235, 6" 200, 8" 150 psi @ 73°F (23°C)					
HT3S-248	2X3/4 (1)	1	5	049	91.02
HT3S-251	2X1-1/2 (2)	1	5	049	187.96
HT3S-288	2-1/2X3/4 (1)	1	5	049	97.53

Schedule 80 PVC Industrial Products & Accessories

Hot-Tap Saddles

Part Number	Size	Std Pk	Mstr Ctn	Prod Code	Price Each
-------------	------	--------	----------	-----------	------------

Hot-Tap Saddle PVC Gray (continued)

FKM Saddle x Socket (Spigot) SS316 Bolts

HT3S-291	2-1/2X1-1/2 (2)	1	5	049	194.28
HT3S-334	3X3/4 (1)	1	5	049	111.33
HT3S-337	3X1-1/2 (2)	1	5	049	214.41
HT3S-416	4X3/4 (1)	1	5	049	128.49
HT3S-419	4X1-1/2 (2)	1	0	049	226.49
HT3S-524	6X3/4 (1)	1	5	049	144.60
HT3S-527	6X1-1/2 (2)	1	0	049	240.60
HT3S-574	8X3/4 (1)	1	0	049	159.93
HT3S-577	8X1-1/2 (2)	1	0	049	255.01

Not intended to convey or dispense water for human consumption through drinking or cooking



Hot-Tap Saddle PVC Gray

EPDM with Stainless Steel Cutter & Bolts

2"- 4" 235, 6" 200, 8" 150 psi @ 73°F (23°C)

HTS2S-248	2X3/4 (1)	1	5	049	401.96
HTS2S-251	2X1-1/2 (2)	1	5	049	605.80
HTS2S-288	2-1/2X3/4 (1)	1	5	049	430.09
HTS2S-291	2-1/2X1-1/2 (2)	1	5	049	608.01
HTS2S-334	3X3/4 (1)	1	5	049	407.08
HTS2S-337	3X1-1/2 (2)	1	5	049	617.49
HTS2S-416	4X3/4 (1)	1	5	049	440.94
HTS2S-419	4X1-1/2 (2)	1	0	049	635.23
HTS2S-524	6X3/4 (1))	1	5	049	487.14
HTS2S-527	6X1-1/2 (2)	1	0	049	698.54
HTS2S-574	8X3/4 (1)	1	0	049	694.95
HTS2S-577	8X1-1/2 (2)	1	0	049	825.26

Lead Free



Hot-Tap Saddle PVC Gray

FKM with Stainless Steel Cutter & Bolts

2"- 4" 235, 6" 200, 8" 150 psi @ 73°F (23°C)

HTS3S-248	2X3/4 (1)	1	5	049	408.33
HTS3S-251	2X1-1/2 (2)	1	5	049	617.06
HTS3S-288	2-1/2X3/4 (1)	1	5	049	436.94
HTS3S-291	2-1/2X1-1/2 (2)	1	5	049	619.21
HTS3S-334	3X3/4 (1)	1	5	049	412.04
HTS3S-337	3X1-1/2 (2)	1	5	049	631.84
HTS3S-416	4X3/4 (1)	1	5	049	449.72
HTS3S-419	4X1-1/2 (2)	1	0	049	652.80
HTS3S-524	6X3/4 (1)	1	5	049	495.87
HTS3S-527	6X1-1/2 (2)	1	0	049	715.34
HTS3S-574	8X3/4 (1)	1	0	049	701.99
HTS3S-577	8X1-1/2(2)	1	0	049	840.83

Lead Free

Schedule 80 CPVC Industrial Products & Accessories
CPVC Gray Saddles & Hot-Tap Saddles

CPVC Gray Saddles & Hot -Tap Saddles

PRICING

Welding & Fabrication Inc

Schedule 80 CPVC Industrial Products & Accessories

Glue-On Saddles

Part Number	Size	Std Pk	Mstr Ctn	Prod Code	Price Each
-------------	------	--------	----------	-----------	------------

Part Number	Size	Std Pk	Mstr Ctn	Prod Code	Price Each
-------------	------	--------	----------	-----------	------------

Saddle

IPS O.D. x Socket Schedule 80



Non Pressure Rated

3963-528C	6X2	1	5	099	101.60
3963-530C	6X3	1	5	099	115.11
3963-532C	6X4	1	10	099	140.87
3963-578C	8X2	1	5	099	154.19
3963-580C	8X3	1	8	099	171.17
3963-582C	8X4	1	5	099	220.04
3963-585C	8X6	1	0	099	251.87
3963-621C	10X2	1	5	099	172.46
3963-623C	10X3	1	8	099	189.92
3963-624C	10X4	1	5	099	233.25
3963-626C	10X6	1	5	099	285.86
3963-628C	10X8	1	5	099	316.19
3963-661C	12X2	1	10	099	189.83
3963-663C	12X3	1	8	099	221.69
3963-664C	12X4	1	8	099	265.41
3963-666C	12X6	1	5	099	307.72
3963-668C	12X8	1	4	099	387.98
3963-670C	12X10	1	0	099	606.79
3963-693C	14X3	1	8	099	238.56
3963-694C	14X4	1	5	099	308.91
3963-696C	14X6	1	10	099	361.02
3963-698C	14X8	1	4	099	429.95
3963-700C	14X10	1	3	099	755.54
3963-702C	14X12	1	4	099	886.02
3963-751C	16X2	1	5	099	229.40
3963-753C	16X3	1	8	099	287.31
3963-754C	16X4	1	10	099	360.59
3963-756C	16X6	1	3	099	488.67
3963-758C	16X8	1	3	099	613.32
3963-760C	16X10	1	0	099	843.06
3963-762C	16X12	1	0	099	1181.94
3963-764C	16X14	1	0	099	1359.12
3963-781C	18X2	1	5	409	279.40
3963-783C	18X3	1	4	099	314.32
3963-784C	18X4	1	5	099	458.04
3963-786C	18X6	1	5	099	627.88
3963-788C	18X8	1	5	099	708.64
3963-790C	18X10	1	0	099	924.35
3963-792C	18X12	1	0	099	1327.83
3963-794C	18X14	1	0	099	1451.74
3963-796C	18X16	1	0	099	1676.17
3963-811C	20X2	1	0	099	294.23
3963-813C	20X3	1	4	099	340.27
3963-814C	20X4	1	4	099	511.06
3963-816C	20X6	1	0	099	678.67
3963-818C	20X8	1	0	099	836.44
3963-820C	20X10	1	5	099	1022.60
3963-822C	20X12	1	0	099	1380.85
3963-824C	20X14	1	0	099	1611.34
3963-826C	20X16	1	0	099	1796.00
3963-828C	20X18	1	0	099	1958.46
3963-901C	24X2	1	5	099	322.51
3963-903C	24X3	1	5	099	538.07
3963-904C	24X4	1	5	099	624.77
3963-906C	24X6	1	5	099	888.85
3963-908C	24X8	1	5	099	1044.89
3963-910C	24X10	1	5	099	1293.02
3963-912C	24X12	1	0	099	1465.60
3963-914C	24X14	1	0	099	1711.79
3963-916C	24X16	1	0	099	1894.40
3963-918C	24X18	1	0	099	2098.73

Saddle (continued)

IPS O.D. x Socket Schedule 80

3963-920C	24X20	1	0	099	2499.28
-----------	-------	---	---	-----	---------

Stub Saddle

IPS O.D. x Socket Schedule 80



Non Pressure Rated

3965-528C	6X2	1	10	099	127.91
3965-530C	6X3	1	3	099	137.41
3965-532C	6X4	1	5	099	170.77
3965-578C	8X2	1	5	099	159.87
3965-580C	8X3	1	4	099	104.91
3965-582C	8X4	1	5	099	237.74
3965-585C	8X6	1	4	099	299.11
3965-621C	10X2	1	6	099	182.77
3965-623C	10X3	1	5	099	205.25
3965-624C	10X4	1	4	099	249.53
3965-626C	10X6	1	4	099	192.79
3965-628C	10X8	1	4	099	321.25
3965-661C	12X2	1	2	099	207.03
3965-663C	12X3	1	2	099	245.09
3965-664C	12X4	1	2	099	285.47
3965-666C	12X6	1	2	099	332.86
3965-668C	12X8	1	2	099	427.22
3965-670C	12X10	1	2	099	755.38
3965-691C	14X2	1	10	099	222.87
3965-693C	14X3	1	0	099	272.77
3965-694C	14X4	1	5	099	323.74
3965-696C	14X6	1	2	099	416.71
3965-700C	14X10	1	0	099	841.66
3965-702C	14X12	1	0	099	1034.05
3965-751C	16X2	1	5	099	257.85
3965-753C	16X3	1	4	099	293.86
3965-754C	16X4	1	3	099	387.11
3965-756C	16X6	1	2	099	518.87
3965-758C	16X8	1	0	099	654.40
3965-760C	16X10	1	0	099	879.54
3965-762C	16X12	1	0	099	1227.23
3965-764C	16X14	1	0	099	1667.91
3965-781C	18X2	1	2	099	295.18
3965-783C	18X3	1	0	099	328.31
3965-784C	18X4	1	0	099	485.07
3965-786C	18X6	1	2	099	658.25
3965-788C	18X8	1	0	099	725.00
3965-790C	18X10	1	0	099	1055.59
3965-792C	18X12	1	0	099	2056.39
3965-794C	18X14	1	0	099	2640.57
3965-796C	18X16	1	0	099	3382.71
3965-811C	20X2	1	0	099	309.46
3965-813C	20X3	1	2	099	350.56
3965-814C	20X4	1	0	099	530.41
3965-816C	20X6	1	0	099	704.42
3965-818C	20X8	1	0	099	875.42
3965-820C	20X10	1	0	099	1197.95
3965-822C	20X12	1	0	099	2202.77
3965-824C	20X14	1	0	099	2857.00
3965-826C	20X16	1	0	099	3617.61
3965-828C	20X18	1	0	099	4410.34
3965-901C	24X2	1	5	099	341.11
3965-903C	24X3	1	2	099	571.55
3965-904C	24X4	1	5	099	669.59
3965-906C	24X6	1	3	099	944.98
3965-908C	24X8	1	0	099	1106.95
3965-910C	24X10	1	0	099	1387.27
3965-912C	24X12	1	0	099	2378.80

Schedule 80 CPVC Industrial Products & Accessories

Glue-On Saddles

Part Number	Size	Std Pk	Mstr Ctn	Prod Code	Price Each
-------------	------	-----------	-------------	--------------	---------------

Stub Saddle (continued)

IPS O.D. x Socket Schedule 80

3965-914C	24X14	1	0	099	3007.23
3965-916C	24X16	1	0	099	3688.66
3965-918C	24X18	1	0	099	4498.13
3965-920C	24X20	1	0	099	5798.59

Schedule 80 CPVC Industrial Products & Accessories

Clamp-On Saddles

Part Number	Size	Hole Saw Dia	Std Pk	Mstr Ctn	Prod Code	Price Each
-------------	------	--------------	--------	----------	-----------	------------

Clamp-On Saddle x Socket Single Outlet, CPVC Gray

with FKM O-ring Seal & Zinc-Plated Hardware

2" - 4" 235, 6" 200, 8"-12" 150 psi @ 73°F (23°C)



866V-247C	2X1/2	3/4	1	10	096	59.67
866V-248C	2X3/4	7/8	1	10	096	59.67
866V-249C	2X1	1-1/8	1	10	096	59.67
866V-250C	2X1-1/4	1-1/2	1	10	096	59.67
866V-251C	2X1-1/2	1-1/2	1	10	096	59.67
866V-291C	2-1/2X1-1/2	1-3/4	1	10	096	82.93
866V-333C ¹	3X1/2	7/8	1	10	096	82.93
866V-334C	3X3/4	7/8	1	10	096	82.93
866V-335C	3X1	1-1/8	1	10	096	82.93
866V-336C ¹	3X1-1/4	2-1/4	1	10	096	82.93
866V-337C ¹	3X1-1/2	2-1/4	1	10	096	82.93
866V-338C	3X2	2-1/4	1	10	096	82.93
866V-415C ¹	4X1/2	1-1/8	1	10	096	99.66
866V-416C ¹	4X3/4	1-1/8	1	10	096	99.66
866V-417C	4X1	1-1/8	1	8	096	99.66
866V-418C ¹	4X1-1/4	1-3/4	1	8	096	99.66
866V-419C	4X1-1/2	1-3/4	1	8	096	99.66
866V-420C	4X2	2-1/4	1	8	096	99.66
866V-421C ¹	4X2-1/2	3	1	4	096	107.00
866V-422C	4X3	3	1	4	096	116.66
866V-523C ¹	6X1/2	1-1/8	1	4	096	166.14
866V-524C ¹	6X3/4	1-1/8	1	4	096	166.14
866V-525C	6X1	1-1/8	1	4	096	166.14
866V-526C ¹	6X1-1/4	2-1/4	1	4	096	166.14
866V-527C ¹	6X1-1/2	2-1/4	1	4	096	166.14
866V-528C	6X2	2-1/4	1	4	096	166.14
866V-529C ¹	6X2-1/2	3	1	4	096	179.80
866V-530C	6X3	3	1	4	096	191.40
866V-532C	6X4	4	1	4	096	203.94
866V-573C ¹	8X1/2	4	1	0	096	354.35
866V-574C ¹	8X3/4	4	1	0	096	354.35
866V-575C ¹	8X1	4	1	0	096	354.35
866V-576C ¹	8X1-1/4	4	1	0	096	354.35
866V-577C ¹	8X1-1/2	4	1	0	096	354.35
866V-578C ¹	8X2	4	1	0	096	354.35
866V-579C ¹	8X2-1/2	4	1	0	096	389.84
866V-580C ¹	8X3	4	1	0	096	409.04
866V-582C	8X4	4	1	0	096	445.43
866V-585C	8X6	6	1	0	096	612.42
866V-624C	10X4	4	1	0	096	572.91
866V-626C	10X6	6	1	0	096	658.73
866V-664C	12X4	4	1	0	096	718.13
866V-666C	12X6	6	1	0	096	761.21

¹Outlet-sized with Bushing

Clamp-On Saddle x Socket Single Outlet, CPVC Gray

with FKM O-ring Seal & SS Hardware

2" - 4" 235, 6" 200, 8"-12" 150 psi @ 73°F (23°C)



866SV-247C	2X1/2	3/4	1	10	096	91.08
866SV-248C	2X3/4	7/8	1	10	096	91.08
866SV-249C	2X1	1-1/8	1	10	096	91.08
866SV-250C	2X1-1/4	1-1/2	1	10	096	91.08
866SV-251C	2X1-1/2	1-1/2	1	10	096	91.08
866SV-291C	2-1/2X1-1/2	1-3/4	1	10	096	122.01
866SV-333C ¹	3X1/2	7/8	1	10	096	122.01
866SV-334C	3X3/4	7/8	1	10	096	122.01
866SV-335C	3X1	1-1/8	1	10	096	122.01
866SV-336C ¹	3X1-1/4	2-1/4	1	10	096	122.01
866SV-337C ¹	3X1-1/2	2-1/4	1	10	096	122.01
866SV-338C	3X2	2-1/4	1	10	096	122.01

Part Number	Size	Hole Saw Dia	Std Pk	Mstr Ctn	Prod Code	Price Each
-------------	------	--------------	--------	----------	-----------	------------

Clamp-On Saddle x Socket Single Outlet, CPVC Gray

(continued)

with FKM O-ring Seal & SS Hardware

866SV-415C ¹	4X1/2	1-1/8	1	10	096	157.60
866SV-416C ¹	4X3/4	1-1/8	1	10	096	157.60
866SV-417C	4X1	1-1/8	1	8	096	157.60
866SV-418C ¹	4X1-1/4	1-3/4	1	8	096	157.60
866SV-419C	4X1-1/2	1-3/4	1	8	096	157.60
866SV-420C	4X2	2-1/4	1	8	096	157.60
866SV-421C ¹	4X2-1/2	3	1	4	096	166.80
866SV-422C	4X3	3	1	4	096	175.29
866SV-523C ¹	6X1/2	1-1/8	1	4	096	250.93
866SV-524C ¹	6X3/4	1-1/8	1	4	096	250.93
866SV-525C	6X1	1-1/8	1	4	096	250.93
866SV-526C ¹	6X1-1/4	2-1/4	1	4	096	250.93
866SV-527C ¹	6X1-1/2	2-1/4	1	4	096	250.93
866SV-528C	6X2	2-1/4	1	4	096	250.93
866SV-529C ¹	6X2-1/2	3	1	4	096	260.88
866SV-530C	6X3	3	1	4	096	269.94
866SV-532C	6X4	4	1	4	096	286.92
866SV-573C ¹	8X1/2	4	1	0	096	462.99
866SV-574C ¹	8X3/4	4	1	0	096	462.99
866SV-575C ¹	8 X 1	4	1	0	096	462.99
866SV-576C ¹	8X1-1/4	4	1	0	096	462.99
866SV-577C ¹	8X1-1/2	4	1	0	096	462.99
866SV-578C ¹	8 X 2	4	1	0	096	462.99
866SV-579C ¹	8X2-1/2	4	1	0	096	490.06
866SV-580C ¹	8X3	4	1	0	096	534.87
866SV-582C	8X4	4	1	0	096	566.94
866SV-585C	8X6	6	1	0	096	629.22
866SV-624C	10X4	4	1	0	096	748.72
866SV-626C	10X6	6	1	0	096	861.15
866SV-664C	12X4	4	1	0	096	938.49
866SV-666C	12X6	6	1	0	096	1088.77

¹Outlet-sized with Bushing

Clamp-On Saddle x Socket Single Outlet, CPVC Gray

with EPDM O-ring Seal & Zinc-Plated Hardware

2" - 4" 235, 6" 200, 8"-12" 150 psi @ 73°F (23°C)



866-247C	2X1/2	3/4	1	10	096	56.71
866-248C	2X3/4	7/8	1	10	096	56.71
866-249C	2X1	1-1/8	1	10	096	56.71
866-250C	2X1-1/4	1-1/2	1	10	096	56.71
866-251C	2X1-1/2	1-1/2	1	10	096	56.71
866-291C	2-1/2X1-1/2	1-3/4	1	10	096	75.97
866-333C ¹	3X1/2	7/8	1	10	096	75.97
866-334C	3X3/4	7/8	1	10	096	75.97
866-335C	3X1	1-1/8	1	10	096	75.97
866-336C ¹	3X1-1/4	2-1/4	1	10	096	75.97
866-337C ¹	3X1-1/2	2-1/4	1	10	096	75.97
866-338C	3X2	2-1/4	1	10	096	75.97
866-415C ¹	4X1/2	1-1/8	1	10	096	92.37
866-416C ¹	4X3/4	1-1/8	1	10	096	92.37
866-417C	4X1	1-1/8	1	8	096	92.37
866-418C ¹	4X1-1/4	1-3/4	1	8	096	92.37
866-419C	4X1-1/2	1-3/4	1	8	096	92.37
866-420C	4X2	2-1/4	1	8	096	92.37
866-421C ¹	4X2-1/2	3	1	4	096	101.45
866-422C	4X3	3	1	4	096	113.08
866-523C ¹	6X1/2	1-1/8	1	4	096	154.15
866-524C ¹	6X3/4	1-1/8	1	4	096	154.15
866-525C	6X1	1-1/8	1	4	096	154.15
866-526C ¹	6X1-1/4	2-1/4	1	4	096	154.15
866-527C ¹	6X1-1/2	2-1/4	1	4	096	154.15

Schedule 80 CPVC Industrial Products & Accessories

Clamp-On Saddles

Part Number	Size	Hole Saw Dia	Std Pk	Mstr Ctn	Prod Code	Price Each
-------------	------	--------------	--------	----------	-----------	------------

Clamp-On Saddle x Socket Single Outlet, CPVC Gray

(continued)

with EPDM O-ring Seal & Zinc-Plated Hardware

866-528C	6X2	2-1/4	1	4	096	154.15
866-529C ¹	6X2-1/2	3	1	4	096	167.57
866-530C	6X3	3	1	4	096	179.75
866-532C	6X4	4	1	4	096	192.09
866-573C ¹	8X1/2	4	1	0	096	338.96
866-574C ¹	8X3/4	4	1	0	096	338.96
866-575C ¹	8X1	4	1	0	096	338.96
866-576C ¹	8X1-1/4	4	1	0	096	338.96
866-577C ¹	8X1-1/2	4	1	0	096	338.96
866-578C ¹	8X2	4	1	0	096	338.96
866-579C ¹	8X2-1/2	4	1	0	096	372.83
866-580C ¹	8X3	4	1	0	096	391.57
866-582C	8X4	4	1	0	096	415.02
866-585C	8X6	6	1	0	096	460.64
866-624C	10X4	4	1	0	096	548.09
866-626C	10X6	4	1	0	096	630.39
866-664C	12X4	4	1	0	096	687.17
866-666C	12X6	6	1	0	096	797.06

¹Outlet-sized with Bushing

Clamp-On Saddle x Socket Single Outlet, CPVC Gray

with EPDM O-ring Seal & SS Hardware

2" - 4" 235, 6" 200, 8"-12" 150 psi @ 73°F (23°C)

866S-247C	2X1/2	3/4	1	10	096	88.28
866S-248C	2X3/4	7/8	1	10	096	88.28
866S-249C	2X1	1-1/8	1	10	096	88.28
866S-250C	2X1-1/4	1-1/2	1	10	096	88.28
866S-251C	2X1-1/2	1-1/2	1	10	096	88.28
866S-291C	2-1/2X1-1/2	1-3/4	1	10	096	117.69
866S-333C ¹	3X1/2	7/8	1	10	096	117.69
866S-334C	3X3/4	7/8	1	10	096	117.69
866S-335C	3X1	1-1/8	1	10	096	117.69
866S-336C ¹	3X1-1/4	2-1/4	1	10	096	117.69
866S-337C ¹	3X1-1/2	2-1/4	1	10	096	117.69
866S-338C	3X2	2-1/4	1	10	096	117.69
866S-415C ¹	4X1/2	1-1/8	1	10	096	150.57
866S-416C ¹	4X3/4	1-1/8	1	10	096	150.57
866S-417C	4X1	1-1/8	1	8	096	150.57
866S-418C ¹	4X1-1/4	1-3/4	1	8	096	150.57
866S-419C	4X1-1/2	1-3/4	1	8	096	150.57
866S-420C	4X2	2-1/4	1	8	096	150.57
866S-421C ¹	4X2-1/2	3	1	4	096	156.92
866S-422C	4X3	3	1	4	096	164.98
866S-523C ¹	6X1/2	1-1/8	1	4	096	237.26
866S-524C ¹	6X3/4	1-1/8	1	4	096	237.26
866S-525C	6X1	1-1/8	1	4	096	237.26
866S-526C ¹	6X1-1/4	2-1/4	1	4	096	237.26
866S-527C ¹	6X1-1/2	2-1/4	1	4	096	237.26
866S-528C	6X2	2-1/4	1	4	096	237.26
866S-529C ¹	6X2-1/2	3	1	4	096	251.14
866S-530C	6X3	3	1	4	096	266.37
866S-532C	6X4	4	1	4	096	278.65
866S-573C ¹	8X1/2	4	1	0	096	445.60
866S-574C ¹	8X3/4	4	1	0	096	445.60
866S-575C ¹	8X1	4	1	0	096	445.60
866S-576C ¹	8X1-1/4	4	1	0	096	445.60
866S-577C ¹	8X1-1/2	4	1	0	096	445.60
866S-578C ¹	8 X 2	4	1	0	096	445.60
866S-579C ¹	8X2-1/2	4	1	0	096	490.06
866S-580C ¹	8X3	4	1	0	096	514.60
866S-582C	8X4	4	1	0	096	545.48



Part Number	Size	Hole Saw Dia	Std Pk	Mstr Ctn	Prod Code	Price Each
-------------	------	--------------	--------	----------	-----------	------------

Clamp-On Saddle x Socket Single Outlet, CPVC Gray

(continued)

with EPDM O-ring Seal & SS Hardware

866S-585C	8X6	6	1	0	096	605.31
866S-624C	10X4	4	1	0	096	720.28
866S-626C	10X6	6	1	0	096	828.39
866S-664C	12X4	4	1	0	096	902.82
866S-666C	12X6	6	1	0	096	1047.32

¹Outlet-sized with Bushing

Clamp-On Saddle x SR Thread Single Outlet, CPVC Gray

with FKM O-ring Seal & Zinc-Plated Hardware

2" - 4" 235, 6" 200, 8"-12" 150 psi @ 73°F (23°C)

867V-247CSR	2X1/2	3/4	1	10	096	68.33
867V-248CSR	2X3/4	7/8	1	10	096	68.33
867V-249CSR	2X1	1-1/8	1	10	096	68.33
867V-250CSR	2X1-1/4	1-1/2	1	10	096	68.33
867V-251CSR	2X1-1/2	1-1/2	1	10	096	68.33
867V-291CSR	2-1/2X1-1/2	1-3/4	1	10	096	95.34
867V-333CSR ¹	3X1/2	7/8	1	10	096	95.34
867V-334CSR	3X3/4	7/8	1	10	096	95.34
867V-335CSR	3X1	1-1/8	1	10	096	95.34
867V-336CSR ¹	3X1-1/4	2-1/4	1	10	096	95.34
867V-337CSR ¹	3X1-1/2	2-1/4	1	10	096	95.34
867V-338CSR	3X2	2-1/4	1	10	096	95.34
867V-415CSR ¹	4X1/2	1-1/8	1	10	096	118.89
867V-416CSR ¹	4X3/4	1-1/8	1	10	096	118.89
867V-417CSR	4X1	1-1/8	1	8	096	118.89
867V-418CSR ¹	4X1-1/4	1-3/4	1	8	096	118.89
867V-419CSR	4X1-1/2	1-3/4	1	8	096	118.89
867V-420CSR	4X2	2-1/4	1	8	096	118.89
867V-421CSR ¹	4X2-1/2	3	1	4	096	128.24
867V-422CSR	4X3	3	1	4	096	141.18
867V-523CSR ¹	6X1/2	1-1/8	1	4	096	198.65
867V-524CSR ¹	6X3/4	1-1/8	1	4	096	198.65
867V-525CSR	6X1	1-1/8	1	4	096	198.65
867V-526CSR ¹	6X1-1/4	2-1/4	1	4	096	198.65
867V-527CSR ¹	6X1-1/2	2-1/4	1	4	096	198.65
867V-528CSR	6X2	2-1/4	1	4	096	198.65
867V-529CSR ¹	6X2-1/2	3	1	4	096	212.72
867V-530CSR	6X3	3	1	4	096	220.38
867V-532CSR	6X4	4	1	4	096	236.05
867V-573CSR ¹	8X1/2	4	1	0	096	396.00
867V-574CSR ¹	8X3/4	4	1	0	096	396.00
867V-575CSR ¹	8X1	4	1	0	096	396.00
867V-576CSR ¹	8X1-1/4	4	1	0	096	396.00
867V-577CSR ¹	8X1-1/2	4	1	0	096	396.00
867V-578CSR ¹	8X2	4	1	0	096	396.00
867V-579CSR ¹	8X2-1/2	4	1	0	096	435.57
867V-580CSR ¹	8X3	4	1	0	096	457.39
867V-582CSR	8X4	4	1	0	096	486.64
867V-585CSR	8X6	6	1	0	096	501.77
867V-624CSR	10X4	4	1	0	096	578.97
867V-626CSR	10X6	6	1	0	096	665.78
867V-664CSR	12X4	4	1	0	096	724.27
867V-666CSR	12X6	6	1	0	096	841.97

¹Outlet-sized with Bushing

Clamp-On Saddle x SR Thread Single Outlet, CPVC Gray

with FKM O-ring Seal & SS Hardware

2" - 4" 235, 6" 200, 8"-12" 150 psi @ 73°F (23°C)

867SV-245CSR ¹	2X1/4	1-1/8	1	10	096	118.82
867SV-247CSR	2X1/2	3/4	1	10	096	113.39



Schedule 80 CPVC Industrial Products & Accessories

Clamp-On Saddles

Part Number	Size	Hole Saw Dia	Std Pk	Mstr Ctn	Prod Code	Price Each
-------------	------	--------------	--------	----------	-----------	------------

Clamp-On Saddle x SR Thread Single Outlet, CPVC Gray (continued)

with FKM O-ring Seal & SS Hardware

867SV-248CSR	2X3/4	7/8	1	10	096	113.39
867SV-249CSR	2X1	1-1/8	1	10	096	113.39
867SV-250CSR	2X1-1/4	1-1/2	1	10	096	113.39
867SV-251CSR	2X1-1/2	1-1/2	1	10	096	113.39
867SV-291CSR	2-1/2X1-1/2	1-3/4	1	10	096	152.33
867SV-331CSR ¹	3X1/4	1-1/8	1	10	096	161.03
867SV-333CSR ¹	3X1/2	7/8	1	10	096	152.33
867SV-334CSR	3X3/4	7/8	1	10	096	152.33
867SV-335CSR	3X1	1-1/8	1	10	096	152.33
867SV-336CSR ¹	3X1-1/4	2-1/4	1	10	096	152.33
867SV-337CSR ¹	3X1-1/2	2-1/4	1	10	096	152.33
867SV-338CSR	3X2	2-1/4	1	10	096	152.33
867SV-413CSR ¹	4X1/4	1-1/8	1	8	096	192.45
867SV-415CSR ¹	4X1/2	1-1/8	1	10	096	192.45
867SV-416CSR ¹	4X3/4	1-1/8	1	10	096	192.45
867SV-417CSR	4X1	1-1/8	1	8	096	192.45
867SV-418CSR ¹	4X1-1/4	1-3/4	1	8	096	192.45
867SV-419CSR	4X1-1/2	1-3/4	1	8	096	192.45
867SV-420CSR	4X2	2-1/4	1	8	096	192.45
867SV-421CSR ¹	4X2-1/2	3	1	4	096	200.22
867SV-422CSR	4X3	3	1	4	096	211.07
867SV-521CSR ¹	6X1/4	1-1/8	1	4	096	333.14
867SV-523CSR ¹	6X1/2	1-1/8	1	4	096	320.76
867SV-524CSR ¹	6X3/4	1-1/8	1	4	096	320.76
867SV-525CSR	6X1	1-1/8	1	4	096	320.76
867SV-526CSR ¹	6X1-1/4	2-1/4	1	4	096	320.76
867SV-527CSR ¹	6X1-1/2	2-1/4	1	4	096	320.76
867SV-528CSR	6X2	2-1/4	1	4	096	320.76
867SV-529CSR ¹	6X2-1/2	3	1	4	096	336.03
867SV-530CSR	6X3	3	1	4	096	349.57
867SV-532CSR	6X4	4	1	4	096	374.20
867SV-571CSR ¹	8X1/4	4	1	0	096	566.76
867SV-573CSR ¹	8X1/2	4	1	0	096	552.56
867SV-574CSR ¹	8X3/4	4	1	0	096	552.56
867SV-575CSR ¹	8X1	4	1	0	096	552.56
867SV-576CSR ¹	8X1-1/4	4	1	0	096	552.56
867SV-577CSR ¹	8X1-1/2	4	1	0	096	552.56
867SV-578CSR ¹	8X2	4	1	0	096	552.56
867SV-579CSR ¹	8X2-1/2	4	1	0	096	607.85
867SV-580CSR ¹	8X3	4	1	0	096	638.27
867SV-582CSR	8X4	4	1	0	096	676.64
867SV-585CSR	8X6	6	1	0	096	712.33
867SV-624CSR	10X4	4	1	0	096	805.22
867SV-626CSR	10X6	6	1	0	096	925.98
867SV-664CSR	12X4	4	1	0	096	1009.28
867SV-666CSR	12X6	6	1	0	096	1170.78

¹Outlet-sized with Bushing

Clamp-On Saddle x SR Thread Single Outlet, CPVC Gray

with EPDM O-ring Seal & Zinc-Plated Hardware

2"- 4" 235, 6" 200, 8"-12" 150 psi @ 73°F (23°C)

867-247CSR	2X1/2	3/4	1	10	096	59.32
867-248CSR	2X3/4	7/8	1	10	096	59.32
867-249CSR	2X1	1-1/8	1	10	096	59.32
867-250CSR	2X1-1/4	1-1/2	1	10	096	59.32
867-251CSR	2X1-1/2	1-1/2	1	10	096	59.32
867-291CSR	2-1/2X1-1/2	1-3/4	1	10	096	81.06
867-333CSR ¹	3X1/2	7/8	1	10	096	81.06
867-334CSR	3X3/4	7/8	1	10	096	81.06
867-335CSR	3X1	1-1/8	1	10	096	81.06
867-336CSR ¹	3X1-1/4	2-1/4	1	10	096	81.06



Part Number	Size	Hole Saw Dia	Std Pk	Mstr Ctn	Prod Code	Price Each
-------------	------	--------------	--------	----------	-----------	------------

Clamp-On Saddle x SR Thread Single Outlet, CPVC Gray (continued)

with EPDM O-ring Seal & Zinc-Plated Hardware

867-337CSR ¹	3X1-1/2	2-1/4	1	10	096	81.06
867-338CSR	3X2	2-1/4	1	10	096	81.06
867-415CSR ¹	4X1/2	1-1/8	1	10	096	102.09
867-416CSR ¹	4X3/4	1-1/8	1	10	096	102.09
867-417CSR	4X1	1-1/8	1	8	096	102.09
867-418CSR ¹	4X1-1/4	1-3/4	1	8	096	102.09
867-419CSR	4X1-1/2	1-3/4	1	8	096	102.09
867-420CSR	4X2	2-1/4	1	8	096	102.09
867-421CSR ¹	4X2-1/2	3	1	4	096	113.28
867-422CSR	4X3	3	1	4	096	122.27
867-523CSR ¹	6X1/2	1-1/8	1	4	096	170.13
867-524CSR ¹	6X3/4	1-1/8	1	4	096	170.13
867-525CSR	6X1	1-1/8	1	4	096	170.13
867-526CSR ¹	6X1-1/4	2-1/4	1	4	096	170.13
867-527CSR ¹	6X1-1/2	2-1/4	1	4	096	170.13
867-528CSR	6X2	2-1/4	1	4	096	170.13
867-529CSR ¹	6X2-1/2	3	1	4	096	180.02
867-530CSR	6X3	3	1	4	096	190.36
867-532CSR	6X4	4	1	4	096	207.01
867-573CSR ¹	8X1/2	4	1	0	096	359.52
867-574CSR	8X3/4	4	1	0	096	359.52
867-575CSR ¹	8X1	4	1	0	096	359.52
867-576CSR ¹	8X1-1/4	4	1	0	096	359.52
867-577CSR ¹	8X1-1/2	4	1	0	096	359.52
867-578CSR ¹	8X2	4	1	0	096	359.52
867-579CSR ¹	8X2-1/2	4	1	0	096	395.45
867-580CSR ¹	8X3	4	1	0	096	419.18
867-582CSR	8X4	4	1	0	096	444.43
867-585CSR	8X6	6	1	0	096	462.08
867-624CSR	10X4	4	1	0	096	528.91
867-626CSR	10X6	6	1	0	096	608.20
867-664CSR	12X4	4	1	0	096	662.98
867-666CSR	12X6	6	1	0	096	769.00

¹Outlet-sized with Bushing

Clamp-On Saddle x SR Thread Single Outlet, CPVC Gray

with EPDM O-ring Seal & SS Hardware

2"- 4" 235, 6" 200, 8"-12" 150 psi @ 73°F (23°C)

867S-245CSR ¹	2X1/4	1-1/8	1	10	096	104.59
867S-247CSR	2X1/2	3/4	1	10	096	101.84
867S-248CSR	2X3/4	7/8	1	10	096	101.84
867S-249CSR	2X1	1-1/8	1	10	096	101.84
867S-250CSR	2X1-1/4	1-1/2	1	10	096	101.84
867S-251CSR	2X1-1/2	1-1/2	1	10	096	101.84
867S-291CSR	2-1/2X1-1/2	1-3/4	1	10	096	136.33
867S-331CSR ¹	3X1/4	1-1/8	1	10	096	140.65
867S-333CSR ¹	3X1/2	7/8	1	10	096	136.33
867S-334CSR	3X3/4	7/8	1	10	096	136.33
867S-335CSR	3X1	1-1/8	1	10	096	136.33
867S-336CSR ¹	3X1-1/4	2-1/4	1	10	096	136.33
867S-337CSR ¹	3X1-1/2	2-1/4	1	10	096	136.33
867S-338CSR	3X2	2-1/4	1	10	096	136.33
867S-413CSR ¹	4X1/4	1-1/8	1	8	096	176.80
867S-415CSR ¹	4X1/2	1-1/8	1	10	096	171.57
867S-416CSR ¹	4X3/4	1-1/8	1	10	096	171.57
867S-417CSR	4X1	1-1/8	1	8	096	171.57
867S-418CSR ¹	4X1-1/4	1-3/4	1	8	096	171.57
867S-419CSR	4X1-1/2	1-3/4	1	8	096	171.57
867S-420CSR	4X2	2-1/4	1	8	096	171.57
867S-421CSR ¹	4X2-1/2	3	1	4	096	181.93
867S-422CSR	4X3	3	1	4	096	190.47



Schedule 80 CPVC Industrial Products & Accessories
Clamp-On Saddles

Part Number	Size	Hole Saw Dia	Std Pk	Mstr Ctn	Prod Code	Price Each
-------------	------	--------------	--------	----------	-----------	------------

Clamp-On Saddle x SR Thread Single Outlet, CPVC Gray (continued)

with EPDM O-ring Seal & SS Hardware

867S-521CSR ¹	6X1/4	1-1/8	1	8	096	296.61
867S-523CSR ¹	6X1/2	1-1/8	1	4	096	285.95
867S-524CSR ¹	6X3/4	1-1/8	1	4	096	285.95
867S-525CSR	6X1	1-1/8	1	4	096	285.95
867S-526CSR ¹	6X1-1/4	2-1/4	1	4	096	285.95
867S-527CSR ¹	6X1-1/2	2-1/4	1	4	096	285.95
867S-528CSR	6X2	2-1/4	1	4	096	285.95
867S-529CSR ¹	6X2-1/2	3	1	4	096	297.38
867S-530CSR	6X3	3	1	4	096	307.35
867S-532CSR	6X4	4	1	4	096	320.89
867S-571CSR ¹	8X1/4	4	1	0	096	526.71
867S-573CSR	8X1/2	4	1	0	096	508.00
867S-574CSR ¹	8X3/4	4	1	0	096	508.00
867S-575CSR ¹	8X1	4	1	0	096	508.00
867S-576CSR ¹	8X1-1/4	4	1	0	096	508.00
867S-577CSR ¹	8X1-1/2	4	1	0	096	508.00
867S-578CSR ¹	8X2	4	1	0	096	508.00
867S-579CSR ¹	8X2-1/2	4	1	0	096	558.78
867S-580CSR ¹	8X3	4	1	0	096	586.67
867S-582CSR	8X4	4	1	0	096	621.86
867S-585CSR	8X6	6	1	0	096	652.31
867S-624CSR	10X4	4	1	0	096	740.02
867S-626CSR	10X6	6	1	0	096	851.03
867S-664CSR	12X4	4	1	0	096	927.62
867S-666CSR	12X6	6	1	0	096	1076.07

¹Outlet-sized with Bushing

Clamp-On Saddle x Socket Double Outlet, CPVC Gray

with FKM O-ring Seal & Zinc-Plated Hardware

2" - 4" 235, 6" 200, 8"-12" 150 psi @ 73°F (23°C)

868V-247C	2X1/2	3/4	1	10	096	81.18
868V-248C	2X3/4	7/8	1	10	096	81.18
868V-249C	2X1	1-1/8	1	10	096	81.18
868V-250C	2X1-1/4	1-1/2	1	10	096	81.18
868V-251C	2X1-1/2	1-1/2	1	10	096	81.18
868V-291C	2-1/2X1-1/2	1-3/4	1	10	096	99.27
868V-333C ¹	3X1/2	7/8	1	10	096	99.27
868V-334C	3X3/4	7/8	1	10	096	99.27
868V-335C	3X1	1-1/8	1	10	096	99.27
868V-336C ¹	3X1-1/4	2-1/4	1	10	096	99.27
868V-337C ¹	3X1-1/2	2-1/4	1	10	096	99.27
868V-338C ¹	3X2	2-1/4	1	10	096	99.27
868V-415C ¹	4X1/2	1-1/8	1	10	096	133.65
868V-416C ¹	4X3/4	1-1/8	1	10	096	133.65
868V-417C	4X1	1-1/8	1	8	096	133.65
868V-418C ¹	4X1-1/4	1-3/4	1	8	096	133.65
868V-419C	4X1-1/2	1-3/4	1	8	096	133.65
868V-420C	4X2	2-1/4	1	8	096	133.65
868V-421C ¹	4X2-1/2	3	1	4	096	139.64
868V-422C	4X3	3	4	0	096	152.40
868V-523C ¹	6X1/2	1-1/8	1	4	096	216.23
868V-524C ¹	6X3/4	1-1/8	1	4	096	216.23
868V-525C	6X1	1-1/8	1	4	096	216.23
868V-526C ¹	6X1-1/4	2-1/4	1	4	096	216.23
868V-527C ¹	6X1-1/2	2-1/4	1	4	096	216.23
868V-528C	6X2	2-1/4	1	4	096	216.23
868V-529C	6X2-1/2	3	1	4	096	250.44
868V-530C	6X3	3	1	4	096	264.05
868V-532C	6X4	4	1	4	096	275.48
868V-573C ¹	8X1/2	4	1	0	096	418.64
868V-574C ¹	8X3/4	4	1	0	096	418.64



Part Number	Size	Hole Saw Dia	Std Pk	Mstr Ctn	Prod Code	Price Each
-------------	------	--------------	--------	----------	-----------	------------

Clamp-On Saddle x Socket Double Outlet, CPVC Gray (continued)

with FKM O-ring Seal & Zinc-Plated Hardware

868V-575C ¹	8X1	4	1	0	096	418.64
868V-576C ¹	8X1-1/4	4	1	0	096	418.64
868V-577C ¹	8X1-1/2	4	1	0	096	418.64
868V-578C ¹	8X2	4	1	0	096	418.64
868V-579C ¹	8X2-1/2	4	1	0	096	460.46
868V-580C ¹	8X3	4	1	0	096	483.45
868V-582C	8X4	4	1	0	096	512.42
868V-585C	8X6	6	1	0	096	568.83
868V-624C	10X4	4	1	0	096	676.83
868V-626C	10X6	6	1	0	096	778.60
868V-664C	12X4	4	1	0	096	848.49
868V-666C	12X6	6	1	0	096	984.12

¹Outlet-sized with Bushing

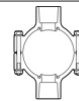
Clamp-On Saddle x Socket Double Outlet, CPVC Gray

with FKM O-ring Seal & SS Hardware

2" - 4" 235, 6" 200, 8"-12" 150 psi @ 73°F (23°C)

868SV-247C	2X1/2	3/4	1	10	096	123.87
868SV-248C	2X3/4	7/8	1	10	096	123.87
868SV-249C	2X1	1-1/8	1	10	096	123.87
868SV-250C	2X1-1/4	1-1/2	1	10	096	123.87
868SV-251C	2X1-1/2	1-1/2	1	10	096	123.87
868SV-291C	2-1/2X1-1/2	1-3/4	1	10	096	164.80
868SV-333C ¹	3X1/2	7/8	1	10	096	164.80
868SV-334C	3X3/4	7/8	1	10	096	164.80
868SV-335C	3X1	1-1/8	1	10	096	164.80
868SV-336C ¹	3X1-1/4	2-1/4	1	10	096	164.80
868SV-337C ¹	3X1-1/2	2-1/4	1	10	096	164.80
868SV-338C	3X2	2-1/4	1	10	096	164.80
868SV-415C ¹	4X1/2	1-1/8	1	10	096	209.43
868SV-416C ¹	4X3/4	1-1/8	1	10	096	209.43
868SV-417C	4X1	1-1/8	1	8	096	209.43
868SV-418C ¹	4X1-1/4	1-3/4	1	8	096	209.43
868SV-419C	4X1-1/2	1-3/4	1	8	096	209.43
868SV-420C	4X2	2-1/4	1	8	096	209.43
868SV-421C ¹	4X2-1/2	3	1	4	096	217.91
868SV-422C	4X3	3	4	0	096	232.14
868SV-523C ¹	6X1/2	1-1/8	1	4	096	348.36
868SV-524C ¹	6X3/4	1-1/8	1	4	096	348.36
868SV-525C	6X1	1-1/8	1	4	096	348.36
868SV-526C ¹	6X1-1/4	2-1/4	1	4	096	348.36
868SV-527C ¹	6X1-1/2	2-1/4	1	4	096	348.36
868SV-528C	6X2	2-1/4	1	4	096	348.36
868SV-529C ¹	6X2-1/2	3	1	4	096	359.07
868SV-530C	6X3	3	1	4	096	375.65
868SV-532C	6X4	4	1	4	096	384.59
868SV-573C ¹	8X1/2	4	1	0	096	588.01
868SV-574C ¹	8X3/4	4	1	0	096	588.01
868SV-575C ¹	8X1	4	1	0	096	588.01
868SV-576C ¹	8X1-1/4	4	1	0	096	588.01
868SV-577C ¹	8X1-1/2	4	1	0	096	588.01
868SV-578C ¹	8X2	4	1	0	096	588.01
868SV-579C ¹	8X2-1/2	4	1	0	096	646.59
868SV-580C ¹	8X3	4	1	0	096	679.09
868SV-582C	8X4	4	1	0	096	719.78
868SV-585C	8X6	6	1	0	096	799.06
868SV-624C	10X4	4	1	0	096	950.89
868SV-626C	10X6	6	1	0	096	1093.65
868SV-664C	12X4	4	1	0	096	1191.80
868SV-666C	12X6	6	1	0	096	1382.64

¹Outlet-sized with Bushing



Schedule 80 CPVC Industrial Products & Accessories
Clamp-On Saddles

Part Number	Size	Hole Saw Dia	Std Pk	Mstr Ctn	Prod Code	Price Each
-------------	------	--------------	--------	----------	-----------	------------

Clamp-On Saddle x Socket Double Outlet, CPVC Gray
 with EPDM O-ring Seal & Zinc-Plated Hardware



2" - 4" 235, 6" 200, 8"-12" 150 psi @ 73°F (23°C)

868-247C	2X1/2	3/4	1	10	096	68.09
868-248C	2X3/4	7/8	1	10	096	68.09
868-249C	2X1	1-1/8	1	10	096	68.09
868-250C	2X1-1/4	1-1/2	1	10	096	68.09
868-251C	2X1-1/2	1-1/2	1	10	096	68.09
868-291C	2-1/2X1-1/2	1-3/4	1	10	096	93.49
868-333C ¹	3X1/2	7/8	1	10	096	93.49
868-334C	3X3/4	7/8	1	10	096	93.49
868-335C	3X1	1-1/8	1	10	096	93.49
868-336C ¹	3X1-1/4	2-1/4	1	10	096	93.49
868-337C ¹	3X1-1/2	2-1/4	1	10	096	93.49
868-338C	3X2	2-1/4	1	10	096	93.49
868-415C ¹	4X1/2	1-1/8	1	10	096	117.34
868-416C ¹	4X3/4	1-1/8	1	10	096	117.34
868-417C	4X1	1-1/8	1	8	096	117.34
868-418C ¹	4X1-1/4	1-3/4	1	8	096	117.34
868-419C	4X1-1/2	1-3/4	1	8	096	117.34
868-420C	4X2	2-1/4	1	8	096	117.34
868-421C ¹	4X2-1/2	3	1	4	096	123.56
868-422C	4X3	3	1	4	096	134.31
868-523C ¹	6X1/2	1-1/8	1	4	096	195.91
868-524C ¹	6X3/4	1-1/8	1	4	096	195.91
868-525C	6X1	1-1/8	1	4	096	195.91
868-526C ¹	6X1-1/4	2-1/4	1	4	096	195.91
868-527C ¹	6X1-1/2	2-1/4	1	4	096	195.91
868-528C	6X2	2-1/4	1	4	096	195.91
868-529C ¹	6X2-1/2	3	1	4	096	208.26
868-530C	6X3	3	1	4	096	220.17
868-532C	6X4	4	1	4	096	227.27
868-573C ¹	8X1/2	4	1	0	096	392.56
868-574C ¹	8X3/4	4	1	0	096	392.56
868-575C ¹	8X1	4	1	0	096	392.56
868-576C ¹	8X1-1/4	4	1	0	096	392.56
868-577C ¹	8X1-1/2	4	1	0	096	392.56
868-578C ¹	8X2	4	1	0	096	392.56
868-579C ¹	8X2-1/2	4	1	0	096	431.76
868-580C ¹	8X3	4	1	0	096	453.40
868-582C	8X4	4	1	0	096	480.56
868-585C	8X6	6	1	0	096	533.42
868-624C	10X4	4	1	0	096	634.82
868-626C	10X6	6	1	0	096	729.98
868-664C	12X4	4	1	0	096	795.62
868-666C	12X6	6	1	0	096	923.09

¹Outlet-sized with Bushing

Clamp-On Saddle x Socket Double Outlet, CPVC Gray
 with EPDM O-ring Seal & SS Hardware



2" - 4" 235, 6" 200, 8"-12" 150 psi @ 73°F (23°C)

868S-247C	2X1/2	3/4	1	10	096	107.69
868S-248C	2X3/4	7/8	1	10	096	107.69
868S-249C	2X1	1-1/8	1	10	096	107.69
868S-250C	2X1-1/4	1-1/2	1	10	096	107.69
868S-251C	2X1-1/2	1-1/2	1	10	096	107.69
868S-291C	2-1/2X1-1/2	1-3/4	1	10	096	143.23
868S-333C ¹	3X1/2	7/8	1	10	096	143.23
868S-334C	3X3/4	7/8	1	10	096	143.23
868S-335C	3X1	1-1/8	1	10	096	143.23
868S-336C ¹	3X1-1/4	2-1/4	1	10	096	143.23
868S-337C ¹	3X1-1/2	2-1/4	1	10	096	143.23
868S-338C	3X2	2-1/4	1	10	096	143.23

Part Number	Size	Hole Saw Dia	Std Pk	Mstr Ctn	Prod Code	Price Each
-------------	------	--------------	--------	----------	-----------	------------

Clamp-On Saddle x Socket Double Outlet, CPVC Gray
 (continued)

with EPDM O-ring Seal & SS Hardware

868S-415C ¹	4X1/2	1-1/8	1	10	096	183.55
868S-416C ¹	4X3/4	1-1/8	1	10	096	183.55
868S-417C	4X1	1-1/8	1	8	096	183.55
868S-418C ¹	4X1-1/4	1-3/4	1	8	096	183.55
868S-419C	4X1-1/2	1-3/4	1	8	096	183.55
868S-420C	4X2	2-1/4	1	8	096	183.55
868S-421C ¹	4X2-1/2	3	1	4	096	192.09
868S-422C	4X3	3	4	0	096	200.89
868S-523C ¹	6X1/2	1-1/8	1	4	096	306.53
868S-524C ¹	6X3/4	1-1/8	1	4	096	306.53
868S-525C	6X1	1-1/8	1	4	096	306.53
868S-526C ¹	6X1-1/4	2-1/4	1	4	096	306.53
868S-527C ¹	6X1-1/2	2-1/4	1	4	096	306.53
868S-528C	6X2	2-1/4	1	4	096	306.53
868S-529C ¹	6X2-1/2	3	1	4	096	321.73
868S-530C	6X3	3	1	4	096	329.49
868S-532C	6X4	4	1	4	096	341.49
868S-573C ¹	8X1/2	4	1	0	096	534.34
868S-574C ¹	8X3/4	4	1	0	096	534.34
868S-575C ¹	8X1	4	1	0	096	534.34
868S-576C ¹	8X1-1/4	4	1	0	096	534.34
868S-577C ¹	8X1-1/2	4	1	0	096	534.34
868S-578C ¹	8X2	4	1	0	096	534.34
868S-579C ¹	8X2-1/2	4	1	0	096	587.76
868S-580C ¹	8X3	4	1	0	096	617.17
868S-582C	8X4	4	1	0	096	654.19
868S-585C	8X6	6	1	0	096	726.29
868S-624C	10X4	4	1	0	096	864.24
868S-626C	10X6	6	1	0	096	993.89
868S-664C	12X4	4	1	0	096	1083.34
868S-666C	12X6	6	1	0	096	1256.62

¹Outlet-sized with Bushing

Clamp-On Saddle x SR Thread Double Outlet, CPVC Gray



with FKM O-ring Seal & Zinc-Plated Hardware

2" - 4" 235, 6" 200, 8"-12" 150 psi @ 73°F (23°C)

869V-247CSR	2X1/2	3/4	1	10	096	90.81
869V-248CSR	2X3/4	7/8	1	10	096	90.81
869V-249CSR	2X1	1-1/8	1	10	096	90.81
869V-250CSR	2X1-1/4	1-1/2	1	10	096	90.81
869V-251CSR	2X1-1/2	1-1/2	1	10	096	90.81
869V-291CSR	2-1/2X1-1/2	1-3/4	1	10	096	124.52
869V-333CSR ¹	3X1/2	7/8	1	10	096	124.52
869V-334CSR	3X3/4	7/8	1	10	096	124.52
869V-335CSR	3X1	1-1/8	1	10	096	124.52
869V-336CSR ¹	3X1-1/4	2-1/4	1	10	096	124.52
869V-337CSR ¹	3X1-1/2	2-1/4	1	10	096	124.52
869V-338CSR	3X2	2-1/4	1	10	096	124.52
869V-415CSR ¹	4X1/2	4-1/2	1	10	096	152.39
869V-416CSR ¹	4X3/4	1-1/8	1	10	096	152.39
869V-417CSR	4X1	1-1/8	1	8	096	152.39
869V-418CSR ¹	4X1-1/4	1-3/4	1	8	096	152.39
869V-419CSR	4X1-1/2	1-3/4	1	8	096	152.39
869V-420CSR	4X2	2-1/4	1	8	096	152.39
869V-421CSR ¹	4X2-1/2	3	1	4	096	163.66
869V-422CSR	4X3	3	4	0	096	172.37
869V-523CSR ¹	6X1/2	1-1/8	1	4	096	252.68
869V-524CSR ¹	6X3/4	1-1/8	1	4	096	252.68
869V-525CSR	6X1	1-1/8	1	4	096	252.68
869V-526CSR ¹	6X1-1/4	2-1/4	1	4	096	252.68
869V-527CSR ¹	6X1-1/2	2-1/4	1	4	096	252.68

Schedule 80 CPVC Industrial Products & Accessories
Clamp-On Saddles

Part Number	Size	Hole Saw Dia	Std Pk	Mstr Ctn	Prod Code	Price Each
-------------	------	--------------	--------	----------	-----------	------------

Clamp-On Saddle x SR Thread Double Outlet, CPVC Gray (continued)

with FKM O-ring Seal & Zinc-Plated Hardware

869V-528CSR	6X2	2-1/4	1	4	096	252.68
869V-529CSR ¹	6X2-1/2	3	1	4	096	265.40
869V-530CSR	6X3	3	1	4	096	276.36
869V-532CSR	6X4	4	1	4	096	292.73
869V-573CSR ¹	8X1/2	4	1	0	096	465.36
869V-574CSR ¹	8X3/4	4	1	0	096	465.36
869V-575CSR ¹	8X1	4	1	0	096	465.36
869V-576CSR ¹	8X1-1/4	4	1	0	096	465.36
869V-577CSR ¹	8X1-1/2	4	1	0	096	465.36
869V-578CSR ¹	8X2	4	1	0	096	465.36
869V-579CSR ¹	8X2-1/2	4	1	0	096	511.88
869V-580CSR ¹	8X3	4	1	0	096	537.43
869V-582CSR	8X4	4	1	0	096	569.66
869V-585CSR	8X6	6	1	0	096	630.11
869V-624CSR	10X4	4	1	0	096	677.75
869V-626CSR	10X6	6	1	0	096	779.52
869V-664CSR	12X4	4	1	0	096	849.74
869V-666CSR	12X6	6	1	0	096	985.56

¹Outlet-sized with Bushing

Clamp-On Saddle x SR Thread Double Outlet, CPVC Gray

with FKM O-ring Seal & SS Hardware

2" - 4" 235, 6" 200, 8"-12" 150 psi @ 73°F (23°C)

869SV-247CSR	2X1/2	3/4	1	10	096	133.65
869SV-248CSR	2X3/4	7/8	1	10	096	133.65
869SV-249CSR	2X1	1-1/8	1	10	096	133.65
869SV-250CSR	2X1-1/4	1-1/2	1	10	096	133.65
869SV-251CSR	2X1-1/2	1-1/2	1	10	096	133.65
869SV-291CSR	2-1/2X1-1/2	1-1/2	1	10	096	169.38
869SV-333CSR ¹	3X1/2	7/8	1	10	096	169.38
869SV-334CSR	3X3/4	7/8	1	10	096	169.38
869SV-335CSR	3X1	1-1/8	1	10	096	169.38
869SV-336CSR ¹	3X1-1/4	2-1/4	1	10	096	169.38
869SV-337CSR ¹	3X1-1/2	2-1/4	1	10	096	169.38
869SV-338CSR	3X2	2-1/4	1	10	096	169.38
869SV-415CSR ¹	4X1/2	1-1/8	1	10	096	222.41
869SV-416CSR ¹	4X3/4	1-1/8	1	10	096	222.41
869SV-417CSR	4X1	1-1/8	1	8	096	222.41
869SV-418CSR ¹	4X1-1/4	1-3/4	1	8	096	222.41
869SV-419CSR	4X1-1/2	1-3/4	1	8	096	222.41
869SV-420CSR	4X2	2-1/4	1	8	096	222.41
869SV-421CSR ¹	4X2-1/2	3	1	4	096	233.51
869SV-422CSR	4X3	3	4	0	096	250.16
869SV-523CSR ¹	6X1/2	1-1/8	1	4	096	397.42
869SV-524CSR ¹	6X3/4	1-1/8	1	4	096	397.42
869SV-525CSR	6X1	1-1/8	1	4	096	397.42
869SV-526CSR ¹	6X1-1/4	2-1/4	1	4	096	397.42
869SV-527CSR ¹	6X1-1/2	2-1/4	1	4	096	397.42
869SV-528CSR	6X2	2-1/4	1	4	096	397.42
869SV-529CSR ¹	6X2-1/2	3	1	4	096	412.69
869SV-530CSR	6X3	3	1	4	096	425.78
869SV-532CSR	6X4	4	1	4	096	435.54
869SV-573CSR ¹	8X1/2	4	1	0	096	650.94
869SV-574CSR ¹	8X3/4	4	1	0	096	650.94
869SV-575CSR ¹	8X1	4	1	0	096	650.94
869SV-576CSR ¹	8X1-1/4	4	1	0	096	650.94
869SV-577CSR ¹	8X1-1/2	4	1	0	096	650.94
869SV-578CSR ¹	8X2	4	1	0	096	650.94
869SV-579CSR ¹	8X2-1/2	4	1	0	096	715.94
869SV-580CSR ¹	8X3	4	1	0	096	738.60
869SV-582CSR	8X4	4	1	0	096	796.88



Part Number	Size	Hole Saw Dia	Std Pk	Mstr Ctn	Prod Code	Price Each
-------------	------	--------------	--------	----------	-----------	------------

Clamp-On Saddle x SR Thread Double Outlet, CPVC Gray (continued)

with FKM O-ring Seal & SS Hardware

869SV-585CSR	8X6	6	1	0	096	851.38
869SV-624CSR	10X4	4	1	0	096	948.27
869SV-626CSR	10X6	6	1	0	096	1090.57
869SV-664CSR	12X4	4	1	0	096	1188.71
869SV-666CSR	12X6	6	1	0	096	1379.01

¹Outlet-sized with Bushing

Clamp-On Saddle x SR Thread Double Outlet, CPVC Gray

with EPDM O-ring Seal & Zinc-Plated Hardware

2" - 4" 235, 6" 200, 8"-12" 150 psi @ 73°F (23°C)

869-247CSR	2X1/2	3/4	1	10	096	78.91
869-248CSR	2X3/4	7/8	1	10	096	78.91
869-249CSR	2X1	1-1/8	1	10	096	78.91
869-250CSR	2X1-1/4	1-1/2	1	10	096	78.91
869-251CSR	2X1-1/2	1-1/2	1	10	096	78.91
869-291CSR	2-1/2X1-1/2	1-3/4	1	10	096	106.55
869-333CSR ¹	3X1/2	7/8	1	10	096	106.55
869-334CSR	3X3/4	7/8	1	10	096	106.55
869-335CSR	3X1	1-1/8	1	10	096	106.55
869-336CSR ¹	3X1-1/4	1-1/8	1	10	096	106.55
869-337CSR ¹	3X1-1/2	2-1/4	1	10	096	106.55
869-338CSR	3X2	2-1/4	1	10	096	106.55
869-415CSR ¹	4X1/2	1-1/8	1	10	096	132.26
869-416CSR ¹	4X3/4	1-1/8	1	10	096	132.26
869-417CSR	4X1	1-1/8	1	8	096	132.26
869-418CSR ¹	4X1-1/4	1-3/4	1	8	096	132.26
869-419CSR	4X1-1/2	1-3/4	1	8	096	132.26
869-420CSR	4X2	2-1/4	1	8	096	132.26
869-421CSR ¹	4X2-1/2	3	1	4	096	146.27
869-422CSR	4X3	3	1	4	096	158.29
869-523CSR ¹	6X1/2	1-1/8	1	4	096	216.05
869-524CSR ¹	6X3/4	1-1/8	1	4	096	216.05
869-525CSR	6X1	1-1/8	1	4	096	216.05
869-526CSR ¹	6X1-1/4	2-1/4	1	4	096	216.05
869-527CSR ¹	6X1-1/2	2-1/4	1	4	096	216.05
869-528CSR	6X2	2-1/4	1	4	096	216.05
869-529CSR ¹	6X2-1/2	3	1	4	096	231.25
869-530CSR	6X3	3	1	4	096	250.20
869-532CSR	6X4	4	1	4	096	265.34
869-573CSR ¹	8X1/2	4	1	0	096	418.28
869-574CSR ¹	8X3/4	4	1	0	096	418.28
869-575CSR ¹	8X1	4	1	0	096	418.28
869-576CSR ¹	8X1-1/4	4	1	0	096	418.28
869-577CSR ¹	8X1-1/2	4	1	0	096	418.28
869-578CSR ¹	8X2	4	1	0	096	418.28
869-579CSR ¹	8X2-1/2	4	1	0	096	460.19
869-580CSR ¹	8X3	4	1	0	096	483.29
869-582CSR	8X4	4	1	0	096	512.23
869-585CSR	8X6	6	1	0	096	553.48
869-624CSR	10X4	4	1	0	096	609.46
869-626CSR	10X6	6	1	0	096	701.01
869-664CSR	12X4	4	1	0	096	764.12
869-666CSR	12X6	6	1	0	096	886.35

¹Outlet-sized with Bushing

Clamp-On Saddle x SR Thread Double Outlet, CPVC Gray

with EPDM O-ring Seal & SS Hardware

2" - 4" 235, 6" 200, 8"-12" 150 psi @ 73°F (23°C)

869S-247CSR	2X1/2	3/4	1	10	096	126.82
869S-248CSR	2X3/4	7/8	1	10	096	126.82



Schedule 80 CPVC Industrial Products & Accessories
Clamp-On Saddles & Hot-Tap Saddles

Clamp-On Saddles

Part Number	Size	Hole Saw Dia	Std Pk	Mstr Ctn	Prod Code	Price Each
Clamp-On Saddle x SR Thread Double Outlet, CPVC Gray (continued) with EPDM O-ring Seal & SS Hardware						
869S-249CSR	2X1	1-1/8	1	10	096	126.82
869S-250CSR	2X1-1/4	1-1/2	1	10	096	126.82
869S-251CSR	2X1-1/2	1-1/2	1	10	096	126.82
869S-291CSR	2-1/2X1-1/2	1-3/4	1	10	096	167.25
869S-333CSR ¹	3X1/2	7/8	1	10	096	167.25
869S-334CSR	3X3/4	7/8	1	10	096	167.25
869S-335CSR	3X1	1-1/8	1	10	096	167.25
869S-336CSR ¹	3X1-1/4	2-1/4	1	10	096	167.25
869S-337CSR ¹	3X1-1/2	2-1/4	1	10	096	167.25
869S-338CSR	3X2	2-1/4	1	10	096	167.25
869S-415CSR ¹	4X1/2	1-1/8	1	10	096	209.42
869S-416CSR ¹	4X3/4	1-1/8	1	10	096	209.42
869S-417CSR	4X1	1-1/8	1	8	096	209.42
869S-418CSR ¹	4X1-1/4	1-3/4	1	8	096	209.42
869S-419CSR	4X1-1/2	1-3/4	1	8	096	209.42
869S-420CSR	4X2	2-1/4	1	8	096	209.42
869S-421CSR ¹	4X2-1/2	3	1	4	096	224.97
869S-422CSR	4X3	3	4	0	096	241.14
869S-523CSR ¹	6X1/2	1-1/8	1	4	096	352.71
869S-524CSR ¹	6X3/4	1-1/8	1	4	096	352.71
869S-525CSR	6X1	1-1/8	1	4	096	352.71
869S-526CSR ¹	6X1-1/4	2-1/4	1	4	096	352.71

Part Number	Size	Hole Saw Dia	Std Pk	Mstr Ctn	Prod Code	Price Each
Clamp-On Saddle x SR Thread Double Outlet, CPVC Gray (continued) with EPDM O-ring Seal & SS Hardware						
869S-527CSR ¹	6X1-1/2	2-1/4	1	4	096	352.71
869S-528CSR	6X2	2-1/4	1	4	096	352.71
869S-529CSR ¹	6X2-1/2	3	1	4	096	360.63
869S-530CSR	6X3	3	1	4	096	376.57
869S-532CSR	6X4	4	1	4	096	387.08
869S-573CSR ¹	8X1/2	4	1	0	096	593.65
869S-574CSR ¹	8X3/4	4	1	0	096	593.65
869S-575CSR ¹	8X1	4	1	0	096	593.65
869S-576CSR ¹	8X1-1/4	4	1	0	096	593.65
869S-577CSR ¹	8X1-1/2	4	1	0	096	593.65
869S-578CSR ¹	8X2	4	1	0	096	593.65
869S-579CSR ¹	8X2-1/2	4	1	0	096	652.96
869S-580CSR ¹	8X3	4	1	0	096	685.53
869S-582CSR	8X4	4	1	0	096	726.72
869S-585CSR	8X6	6	1	0	096	763.17
869S-624CSR	10X4	4	1	0	096	864.80
869S-626CSR	10X6	6	1	0	096	994.44
869S-664CSR	12X4	4	1	0	096	1084.05
869S-666CSR	12X6	6	1	0	096	1257.36

¹Outlet-sized with Bushing

Hot-Tap Saddles

Part Number	Size	Std Pk	Mstr Ctn	Prod Code	Price Each
Hot-Tap Saddle CPVC Gray EPDM Saddle x Socket (Spigot) Zinc Plated Bolts					
2" - 4" 235, 6" 200, 8" 150 psi @ 73°F (23°C)					
HT2-248C	2X3/4 (1)	1	5	050	89.63
HT2-251C	2X1-1/2 (2)	1	5	050	185.01
HT2-288C	2-1/2X3/4 (1)	1	5	050	95.67
HT2-291C	2-1/2X1-1/2 (2)	1	5	050	191.19
HT2-334C	3X3/4 (1)	1	5	050	109.62
HT2-337C	3X1-1/2 (2)	1	5	050	210.85
HT2-416C	4X3/4 (1)	1	5	050	126.65
HT2-419C	4X1-1/2 (2)	1	0	050	222.94
HT2-524C	6X3/4 (1)	1	5	050	142.43
HT2-527C	6X1-1/2 (2)	1	0	050	237.33
HT2-574C	8X3/4 (1)	1	5	050	131.18
HT2-577C	8X1-1/2 (2)	1	0	050	245.06
Not intended to convey or dispense water for human consumption through drinking or cooking					
Hot-Tap Saddle CPVC Gray EPDM Saddle x Socket (Spigot) SS316 Bolts					
2" - 4" 235, 6" 200, 8" 150 psi @ 73°F (23°C)					
HT2S-248C	2X3/4 (1)	1	5	050	139.33
HT2S-251C	2X1-1/2 (2)	1	5	050	287.96
HT2S-288C	2-1/2X3/4 (1)	1	5	050	148.93
HT2S-291C	2-1/2X1-1/2 (2)	1	5	050	297.71
HT2S-334C	3X3/4 (1)	1	5	050	170.77
HT2S-337C	3X-1/2 (2)	1	5	050	328.21
HT2S-416C	4X3/4 (1)	1	5	050	197.24
HT2S-419C	4X1-1/2 (2)	1	0	050	347.11
HT2S-524C	6X3/4 (1)	1	5	050	221.39

Part Number	Size	Std Pk	Mstr Ctn	Prod Code	Price Each
Hot-Tap Saddle CPVC Gray (continued) EPDM Saddle x Socket (Spigot) SS316 Bolts					
HT2S-527C	6X1-1/2 (2)	1	0	050	369.39
HT2S-574C	8X3/4 (1)	1	0	050	239.35
HT2S-577C	8X1-1/2 (2)	1	0	050	399.42
Not intended to convey or dispense water for human consumption through drinking or cooking					
Hot-Tap Saddle CPVC Gray FKM Saddle x Soc (Spigot) Zinc Plated Bolts					
2" - 4" 235, 6" 200, 8" 150 psi @ 73°F (23°C)					
HT3-248C	2X3/4 (1)	1	5	050	97.39
HT3-251C	2X1-1/2 (2)	1	5	050	200.79
HT3-288C	2-1/2X3/4 (1)	1	5	050	104.04
HT3-291C	2-1/2X1-1/2 (2)	1	5	050	207.44
HT3-334C	3X3/4 (1)	1	5	050	118.89
HT3-337C	3X1-1/2 (2)	1	5	050	229.12
HT3-416C	4X3/4 (1)	1	5	050	213.96
HT3-419C	4X1-1/2 (2)	1	0	050	242.13
HT3-524C	6X3/4 (1)	1	5	050	154.65
HT3-527C	6X1-1/2 (2)	1	0	050	256.99
HT3-574C	8X3/4 (1)	1	0	050	167.19
HT3-577C	8X1-1/2 (2)	1	0	050	311.51
Not intended to convey or dispense water for human consumption through drinking or cooking					
Hot-Tap Saddle CPVC Gray FKM Saddle x Socket (Spigot) SS316 Bolts					
2" - 4" 235, 6" 200, 8" 150 psi @ 73°F (23°C)					
HT3S-248C	2X3/4 (1)	1	5	050	151.73
HT3S-251C	2X-1-1/2 (2)	1	5	050	312.72
HT3S-288C	2-1/2X3/4 (1)	1	5	050	161.93

Schedule 80 CPVC Industrial Products & Accessories

Hot-Tap Saddles

Part Number	Size	Std Pk	Mstr Ctn	Prod Code	Price Each
-------------	------	--------	----------	-----------	------------

Hot-Tap Saddle CPVC Gray (continued)

FKM Saddle x Socket (Spigot) SS316 Bolts

HT3S-291C	2-1/2X1-1/2 (2)	1	5	050	322.79
HT3S-334C	3X3/4 (1)	1	5	050	184.85
HT3S-337C	3X1-1/2 (2)	1	5	050	363.20
HT3S-416C	4X3/4 (1)	1	5	050	213.96
HT3S-419C	4X1-1/2 (2)	1	0	050	376.98
HT3S-524C	6X3/4 (1)	1	5	050	240.75
HT3S-527C	6X1-1/2 (2)	1	0	050	400.03
HT3S-574C	8X3/4 (1)	1	0	050	260.24
HT3S-577C	8X1-1/2 (2)	1	5	050	432.47

Not intended to convey or dispense water for human consumption through drinking or cooking

Hot-Tap Saddle CPVC Gray

EPDM with Stainless Steel Cutter & Bolts



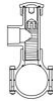
2" - 4" 235, 6" 200, 8" 150 psi @ 73°F (23°C)

HTS2S-248C	2X3/4 (1)	1	5	050	428.68
HTS2S-251C	2X1-1/2 (2)	1	5	050	635.32
HTS2S-288C	2-1/2X3/4 (1)	1	5	050	458.69
HTS2S-291C	2-1/2X1-1/2 (2)	1	5	050	636.34
HTS2S-334C	3X3/4 (1)	1	5	050	437.49
HTS2S-337C	3X1-1/2 (2)	1	5	050	654.08
HTS2S-416C	4X3/4 (1)	1	5	050	465.83
HTS2S-419C	4X1-1/2 (2)	1	0	050	670.35
HTS2S-524C	6X3/4 (1)	1	5	050	543.00
HTS2S-527C	6X1-1/2 (2)	1	0	050	757.77
HTS2S-574C	8X3/4 (1)	1	0	050	753.26
HTS2S-577C	8X1-1/2 (2)	1	0	050	897.19

Lead Free

Hot-Tap Saddle CPVC Gray

FKM with Stainless Steel Cutter & Bolts



2" - 4" 235, 6" 200, 8" 150 psi @ 73°F (23°C)

HTS3S-248C	2X3/4 (1)	1	5	050	435.40
HTS3S-251C	2X1-1/2 (2)	1	5	050	644.99
HTS3S-288C	2-1/2X3/4 (1)	1	5	050	465.98
HTS3S-291C	2-1/2X1-1/2 (2)	1	5	050	647.53
HTS3S-334C	3X3/4 (1)	1	5	050	400.67
HTS3S-337C	3X1-1/2 (2)	1	5	050	665.44
HTS3S-416C	4X3/4 (1)	1	5	050	474.61
HTS3S-419C	4X1-1/2 (2)	1	0	050	687.17
HTS3S-524C	6X3/4 (1)	1	5	050	551.49
HTS3S-527C	6X1-1/2 (2)	1	0	050	774.57
HTS3S-574C	8X3/4 (1)	1	0	050	769.93
HTS3S-577C	8X1-1/2 (2)	1	0	050	905.22

Lead Free