

# PVC White Saddles & Hot-Tap Saddles

PRODUCT

**Schedule 40 Fittings Product**  
**PVC White Saddles & Hot-Tap Saddles**

**Glue-On Saddles**

Part Number	Size	Std Pk	Mstr Ctn	Prod Code	MSRP
-------------	------	--------	----------	-----------	------

Saddle



**IPS O.D. x Socket**

NSF-61

463-288	2-1/2X3/4	10	0	040	33.85
463-333 <sup>1</sup>	3X1/2	10	0	040	37.08
463-335 <sup>1</sup>	3X1	10	0	040	37.08
463-336 <sup>1</sup>	3X1-1/4	10	0	040	37.08
463-337	3X1-1/2	10	0	040	33.85
463-338 <sup>2</sup>	3X2	10	0	040	37.08
463-415 <sup>1</sup>	4X1/2	10	0	040	49.49
463-416 <sup>1</sup>	4X3/4	10	0	040	60.88
463-417 <sup>1</sup>	4X1	10	0	040	49.49
463-418 <sup>1</sup>	4X1-1/4	10	0	040	49.49
463-419	4X1-1/2	10	0	040	45.22
463-420 <sup>2</sup>	4X2	10	0	040	49.49
463-485 <sup>1</sup>	5X1-1/2	6	0	040	61.82
463-486	5X2	6	0	040	56.44
463-523 <sup>1</sup>	6X1/2	5	0	040	74.25
463-525 <sup>1</sup>	6X1	10	0	040	74.25
463-526 <sup>1</sup>	6X1-1/4	5	0	040	74.25
463-527	6X1-1/2	5	0	040	67.85
463-528 <sup>2</sup>	6X2	5	0	040	74.25
463-530 <sup>1</sup>	6X3	5	0	040	105.98
463-532	6X4	5	0	040	85.38
463-573 <sup>1</sup>	8X1/2	5	0	040	110.74
463-575 <sup>1</sup>	8X1	5	0	040	110.74
463-576 <sup>1</sup>	8X1-1/4	5	0	040	110.74
463-577	8X1-1/2	5	0	040	101.11
463-578 <sup>2</sup>	8X2	5	0	040	110.74
463-580 <sup>1</sup>	8X3	5	0	040	128.40
463-582	8X4	5	0	040	108.40
463-624	10X4	5	0	041	124.28

<sup>1</sup> Outlet-sized with Bushing

<sup>2</sup> Outlet-sized with Coupling

Note: See following Installation Instructions

Saddle



**IPS O.D. x Fipt**

NSF-61

464-288	2-1/2X3/4	10	0	040	33.85
464-337	3X1-1/2	10	0	040	33.85
464-419	4X1-1/2	10	0	040	45.22
464-486	5X2	6	0	040	56.44
464-527	6X1-1/2	5	0	040	67.82

Part Number	Size	Std Pk	Mstr Ctn	Prod Code	MSRP
-------------	------	--------	----------	-----------	------

Saddle (continued)

**IPS O.D. x Fipt**

464-532	6X4	5	0	040	85.38
464-577	8X1-1/2	5	0	040	101.11
464-582	8X4	5	0	040	108.40
464-624	10X4	5	0	041	124.28

**Saddle Installation**

**Instructions:**

When Assembling Spears® Saddles to PVC pipe, Spears® Manufacturing Company recommends Spears® PVC-19 Extra Heavy Body Solvent Cement and Spears® PRIMER-68 or PRIMER-70, or equivalent. Although good connections may be accomplished without saddle straps, Spears® Manufacturing Company recommends the use of clamp or strap device during the assembly step to ensure good compression between the pipe and fitting surfaces as the solvent cures. Solvent cemented saddles are non pressure rated. For additional information, contact Spears® Technical Service.

Snap-On Saddle



**IPS O.D. x Socket**

NSF-61

463-005	1/2	25	300	040	1.77
463-007	3/4	25	200	040	1.96
463-010	1	50	0	040	3.75
463-012	1-1/4	50	0	040	5.83
463-015	1-1/2	25	0	040	7.08
463-020	2	20	0	040	10.35
463-101	3/4X1/2	25	300	040	2.29
463-130	1X1/2	50	0	040	3.75

Note: See following installation instructions

Snap-On Saddle



**IPS O.D. x Fipt**

464-005	1/2	25	300	040	2.29
464-007	3/4	25	200	040	3.60
464-010	1	50	0	040	6.61
464-071	1/2X1/8	50	300	040	2.29
464-097	3/4X1/8	50	200	040	3.03
464-101	3/4X1/2	25	300	040	3.03
464-130	1X1/2	50	0	040	5.46
464-131	1X3/4	50	0	040	5.46
464-210	1-1/2X3/4	25	0	040	13.76

**Schedule 40 Fittings Product**  
**PVC White Saddles & Hot-Tap Saddles**

**Glue-On Saddles**

Part Number	Size	Std Pk	Mstr Ctn	Prod Code	MSRP
-------------	------	--------	----------	-----------	------

**Snap-On Saddle (continued)**

**IPS O.D. x Fipt**

**Snap-On Saddle Installation Instructions**


- The surface to be joined must be wiped clean.
- Using an appropriate applicator, apply a coat of primer to the fitting and pipe.
- While the primer is still wet, apply a generous coat of medium bodied cement first to the pipe, then to the fitting and then to the pipe again, covering an area of the pipe slightly larger than the saddle.
- Without delay, push the saddle onto the pipe and rotate the fitting approximately 15° in each direction to evenly distribute the cement.
- Allow cement to cure.
- Drill fitting and pipe with the recommended size hole saw.
- Remove debris from the line.
- Follow all safe handling precautions.

Solvent cemented saddles are non pressure rated. For additional information, contact Spears® Technical Service.

Size	SCH 40 DWV Prod Code: 390	SCH 80 DWV Prod Code: 400
	Part Number MSRP	Part Number MSRP


**Saddle (IPS O.D.x Socket)**

**Non Pressure Rated**

	<b>6X2</b>	3763-528 <b>41.80</b>	---
	<b>6X3</b>	3763-530 <b>42.78</b>	---
	<b>6X4</b>	3763-532 <b>44.49</b>	---
	<b>8X2</b>	3763-578 <b>62.20</b>	---
	<b>8X3</b>	3763-580 <b>62.20</b>	---
	<b>8X4</b>	3763-582 <b>62.96</b>	---
	<b>8X6</b>	3763-585 <b>64.75</b>	---
	<b>10X2</b>	3763-621 <b>77.84</b>	---
	<b>10X3</b>	3763-623 <b>78.93</b>	---
	<b>10X4</b>	3763-624 <b>79.25</b>	---
	<b>10X6</b>	3763-626 <b>92.76</b>	---

Size	SCH 40 DWV Prod Code: 390	SCH 80 DWV Prod Code: 400
	Part Number MSRP	Part Number MSRP

**Saddle (IPS O.D.x Socket) (continued)**

	<b>10X8</b>	3763-628 <b>148.84</b>	---
	<b>12X2</b>	3763-661 <b>92.05</b>	---
	<b>12X3</b>	3763-663 <b>93.76</b>	---
	<b>12X4</b>	3763-664 <b>95.77</b>	---
	<b>12X6</b>	3763-666 <b>111.06</b>	---
	<b>12X8</b>	3763-668 <b>177.05</b>	---
	<b>12X10</b>	3763-670 <b>256.02</b>	---
	<b>14X2</b>	3763-691 <b>117.98</b>	---
	<b>14X3</b>	3763-693 <b>126.09</b>	---
	<b>14X4</b>	3763-694 <b>134.69</b>	---
	<b>14X6</b>	3763-696 <b>137.40</b>	---
	<b>14X8</b>	3763-698 <b>210.83</b>	---
	<b>14X10</b>	3763-700 <b>271.22</b>	---
	<b>14X12</b>	3763-702 <b>298.96</b>	---
	<b>16X2</b>	3763-751 <b>125.57</b>	---
	<b>16X3</b>	3763-753 <b>127.29</b>	---
	<b>16X4</b>	3763-754 <b>138.56</b>	---
	<b>16X6</b>	3763-756 <b>148.05</b>	---
	<b>16X8</b>	3763-758 <b>220.05</b>	---
	<b>16X10</b>	3763-760 <b>279.69</b>	---
<b>16X12</b>	3763-762 <b>309.96</b>	---	
<b>16X14</b>	3763-764 <b>322.20</b>	---	
<b>18X2</b>	3763-781 <b>184.07</b>	---	
<b>18X3</b>	3763-783 <b>187.65</b>	---	
<b>18X4</b>	3763-784 <b>190.53</b>	---	
<b>18X6</b>	3763-786 <b>202.86</b>	---	
<b>18X8</b>	3763-788 <b>296.01</b>	---	

Schedule 40 Fittings Product  
**PVC White Saddles & Hot-Tap Saddles**

**Glue-On Saddles**

Size	SCH 40 DWV Prod Code: 390	SCH 80 DWV Prod Code: 400
	Part Number MSRP	Part Number MSRP

Saddle (IPS O.D.x Socket) (continued)

18X10	3763-790 328.15	---
18X12	3763-792 337.21	---
18X14	3763-794 509.43	---
18X16	3763-796 665.03	---
20X2	3763-811 184.51	---
20X3	3763-813 187.03	---
20X4	3763-814 196.17	---
20X6	3763-816 204.88	---
20X8	3763-818 295.62	---
20X10	3763-820 328.16	---
20X12	3763-822 467.84	---
20X14	3763-824 510.48	---
20X16	3763-826 667.46	---
20X18	3763-828 756.44	---
24X2	3763-901 176.01	---
24X3	3763-903 194.55	---
24X4	3763-904 196.71	---
24X6	3763-906 208.68	---
24X8	3763-908 298.36	---
24X10	3763-910 331.91	---
24X12	3763-912 469.51	---
24X14	3763-914 525.75	---
24X16	3763-916 590.88	---
24X18	3763-918 796.31	---
24X20	3763-920 891.59	---



**Size**

SCH 40 DWV Prod Code: 390	SCH 80 DWV Prod Code: 400
Part Number MSRP	Part Number MSRP

Stub Saddle (IPS O.D x Socket)  
 Non Pressure Rated

6X2	3765-528 44.94	---
6X3	3765-530 46.01	---
6X4	3765-532 47.85	---
8X2	3765-578 66.24	---
8X3	3765-580 66.88	---
8X4	3765-582 67.69	---
8X6	3765-585 69.62	---
10X2	3765-621 83.69	---
10X3	3765-623 84.87	---
10X4	3765-624 107.56	---
10X6	3765-626 99.74	---
10X8	3765-628 160.03	---
12X2	3765-661 98.98	---
12X3	3765-663 100.82	---
12X4	3765-664 102.97	---
12X6	3765-666 119.35	---
12X8	3765-668 190.38	---
12X10	3765-670 275.29	---
14X2	3765-691 126.86	---
14X3	3765-693 128.29	---
14X4	3765-694 129.91	---
14X6	3765-696 147.75	---
14X8	3765-698 225.23	---
14X10	3765-700 291.63	---
14X12	3765-702 321.47	---
16X2	3765-751 135.01	---
16X3	3765-753 136.87	---



Suitable for Oil-Free air handling to 25 psi, not for distribution of compressed air or gas

Schedule 40 Fittings Product  
**PVC White Saddles & Hot-Tap Saddles**

**Glue-On Saddles**

Size	SCH 40 DWV Prod Code: 390	SCH 80 DWV Prod Code: 400
	Part Number MSRP	Part Number MSRP

Stub Saddle (IPS O.D x Socket) (continued)

16X4	3765-754 138.95	---
16X6	3765-756 159.18	---
16X8	3765-758 236.62	---
16X10	3765-760 300.75	---
16X12	3765-762 333.28	---
16X14	3765-764 346.45	---
18X2	3765-781 197.91	---
18X3	3765-783 155.64	---
18X4	3765-784 204.85	---
18X6	3765-786 218.13	---
18X8	3765-788 318.27	---
18X10	3765-790 352.83	---
18X12	3765-792 362.57	---
18X14	3765-794 547.76	---
18X16	3765-796 714.48	---
20X2	3765-811 198.38	---
20X3	3765-813 201.12	---
20X4	3765-814 210.94	---
20X6	3765-816 220.31	---
20X8	3765-818 317.87	---
20X10	3765-820 352.84	---
20X12	3765-822 503.08	---
20X14	3765-824 548.91	---
20X16	3765-826 717.71	---
20X18	3765-828 813.39	---
24X2	3765-901 189.24	---



Size	SCH 40 DWV Prod Code: 390	SCH 80 DWV Prod Code: 400
	Part Number MSRP	Part Number MSRP

Stub Saddle (IPS O.D x Socket) (continued)

24X3	3765-903 209.18	---
24X4	3765-904 211.52	---
24X6	3765-906 224.40	---
24X8	3765-908 320.82	---
24X10	3765-910 356.85	---
24X12	3765-912 504.83	---
24X14	3765-914 565.34	---
24X16	3765-916 635.37	---
24X18	3765-918 856.23	---
24X20	3765-920 958.71	---



Schedule 40 Fittings Product

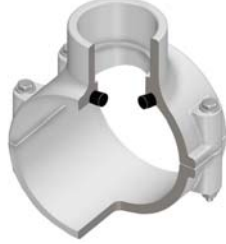
Clamp-On Saddles

Clamp-On Saddles

Part Number	Size	Hole Saw Dia	Std Pk	Mstr Ctn	Prod Code	MSRP
-------------	------	--------------	--------	----------	-----------	------

Clamp-On Saddle x Soc Single Outlet, PVC White

with Buna-N O-ring Seal & Zinc-Plated Hardware



2"- 4" 235, 6" 200, 8"-12" 150 psi @ 73°F (23°C)

466-247	2X1/2	3/4	1	10	046	34.92
466-248	2X3/4	7/8	1	10	046	34.92
466-249	2X1	1-1/8	1	10	046	34.92
466-250	2X1-1/4	1-1/2	1	10	046	34.92
466-251	2X1-1/2	1-1/2	1	10	046	34.92
466-291	2-1/2X1-1/2	1-3/4	1	10	046	47.36
466-333 <sup>1</sup>	3X1/2	7/8	1	10	046	47.36
466-334	3X3/4	7/8	1	10	046	47.36
466-335	3X1	1-1/8	1	10	046	47.36
466-336 <sup>1</sup>	3X1-1/4	2-1/4	1	10	046	47.36
466-337 <sup>1</sup>	3X1-1/2	2-1/4	1	10	046	47.36
466-338	3X2	2-1/4	1	10	046	47.36
466-415 <sup>1</sup>	4X1/2	1-1/8	1	10	046	60.67
466-416 <sup>1</sup>	4X3/4	1-1/8	1	10	046	60.67
466-417	4X1	1-1/8	1	8	046	60.67
466-418 <sup>1</sup>	4X1-1/4	1-3/4	1	8	046	60.67
466-419	4X1-1/2	1-3/4	1	8	046	60.67
466-420	4X2	2-1/4	1	8	046	60.67
466-421 <sup>1</sup>	4X2-1/2	3	1	4	046	68.65
466-422	4X3	3	1	4	046	75.40
466-523 <sup>1</sup>	6X1/2	1-1/8	1	4	046	104.40
466-524 <sup>1</sup>	6X3/4	1-1/8	1	4	046	104.40
466-525	6X1	1-1/8	1	4	046	104.40
466-526 <sup>1</sup>	6X1-1/4	2-1/4	1	4	046	104.40
466-527 <sup>1</sup>	6X1-1/2	2-1/4	1	4	046	104.40
466-528	6X2	2-1/4	1	4	046	104.40
466-529 <sup>1</sup>	6X2-1/2	3	1	4	046	114.77
466-530	6X3	3	1	4	046	119.59
466-532	6X4	4	1	4	046	125.89
466-573 <sup>1</sup>	8X1/2	4	1	0	046	162.31
466-574 <sup>1</sup>	8X3/4	4	1	0	046	162.31
466-575 <sup>1</sup>	8X1	4	1	0	046	162.31
466-576 <sup>1</sup>	8X1-1/4	4	1	0	046	162.31
466-577 <sup>1</sup>	8X1-1/2	4	1	0	046	162.31
466-578	8 X 2	4	1	0	046	162.31
466-579 <sup>1</sup>	8X2-1/2	4	1	0	046	178.46
466-580 <sup>1</sup>	8X3	4	1	0	046	189.24
466-582	8X4	4	1	0	046	200.40
466-585	8X6	6	1	0	046	222.56
466-620 <sup>1</sup>	10X1-1/2	4	1	0	046	264.84
466-624	10X4	4	1	0	046	264.84
466-626	10X6	6	1	0	046	304.52
466-660 <sup>1</sup>	12X1-1/2	4	1	0	046	331.99
466-664	12X4	4	1	0	046	331.99

Part Number	Size	Hole Saw Dia	Std Pk	Mstr Ctn	Prod Code	MSRP
-------------	------	--------------	--------	----------	-----------	------

Clamp-On Saddle x Soc Single Outlet, PVC White (continued)  
with Buna-N O-ring Seal & Zinc-Plated Hardware

466-666	12X6	6	1	0	046	384.99
---------	------	---	---	---	-----	--------

<sup>1</sup> Outlet-sized with Bushing

Clamp-On Saddle x Soc Single Outlet, PVC White

with Buna-N O-ring Seal & SS Hardware



2"- 4" 235, 6" 200, 8"-12" 150 psi @ 73°F (23°C)

466S-247	2X1/2	3/4	1	10	046	57.39
466S-248	2X3/4	7/8	1	10	046	57.39
466S-249	2X1	1-1/8	1	10	046	57.39
466S-250	2X1-1/4	1-1/2	1	10	046	57.39
466S-251	2X1-1/2	1-1/2	1	10	046	57.39
466S-291	2-1/2X1-1/2	1-3/4	1	10	046	77.20
466S-333 <sup>1</sup>	3X1/2	7/8	1	10	046	77.20
466S-334	3X3/4	7/8	1	10	046	77.20
466S-335	3X1	1-1/8	1	10	046	77.20
466S-336 <sup>1</sup>	3X1-1/4	2-1/4	1	10	046	77.20
466S-337 <sup>1</sup>	3X1-1/2	2-1/4	1	10	046	77.20
466S-338	3X2	2-1/4	1	10	046	77.20
466S-415 <sup>1</sup>	4X1/2	1-1/8	1	10	046	97.13
466S-416 <sup>1</sup>	4X3/4	1-1/8	1	10	046	97.13
466S-417	4X1	1-1/8	1	10	046	97.13
466S-418 <sup>1</sup>	4X1-1/4	1-3/4	1	8	046	97.13
466S-419	4X1-1/2	1-3/4	1	8	046	97.13
466S-420	4X2	2-1/4	1	8	046	97.13
466S-421 <sup>1</sup>	4X2-1/2	3	1	4	046	106.14
466S-422	4X3	3	1	4	046	110.40
466S-523 <sup>1</sup>	6X1/2	1-1/8	1	4	046	159.11
466S-524 <sup>1</sup>	6X3/4	1-1/8	1	4	046	159.11
466S-525	6X1	1-1/8	1	4	046	159.11
466S-526 <sup>1</sup>	6X1-1/4	2-1/4	1	4	046	159.11
466S-527 <sup>1</sup>	6X1-1/2	2-1/4	1	4	046	159.11
466S-528	6X2	2-1/4	1	4	046	159.11
466S-529 <sup>1</sup>	6X2-1/2	3	1	4	046	164.34
466S-530	6X3	3	1	4	046	167.73
466S-532	6X4	4	1	4	046	175.19
466S-573 <sup>1</sup>	8X1/2	4	1	0	046	232.28
466S-574 <sup>1</sup>	8X3/4	4	1	0	046	232.28
466S-575 <sup>1</sup>	8X1	4	1	0	046	232.28
466S-576 <sup>1</sup>	8X1-1/4	4	1	0	046	232.28
466S-577 <sup>1</sup>	8X1-1/2	4	1	0	046	232.28
466S-578	8 X 2	4	1	0	046	232.28
466S-579 <sup>1</sup>	8X2-1/2	4	1	0	046	255.53
466S-580 <sup>1</sup>	8X3	4	1	0	046	268.34
466S-582	8X4	4	1	0	046	284.51
466S-585	8X6	6	1	0	046	315.75
466S-620 <sup>1</sup>	10X1-1/2	4	1	0	046	375.72
466S-624	10X4	4	1	0	046	375.72
466S-626	10X6	6	1	0	046	432.08

Suitable for Oil-Free air handling to 25 psi, not for distribution of compressed air or gas



**Schedule 40 Fittings Product**  
**Clamp-On Saddles**

**Clamp-On Saddles**

Part Number	Size	Hole Saw Dia	Std Pk	Mstr Ctn	Prod Code	MSRP
<b>Clamp-On Saddle x Soc Single Outlet, PVC White (continued)</b> <b>with Buna-N O-ring Seal &amp; SS Hardware</b>						
466S-664	12X4	4	1	0	046	470.95
466S-666	12X6	6	1	0	046	546.33
<sup>1</sup> Outlet-sized with Bushing						

Clamp-On Saddle x Soc Single Outlet, PVC White

with EPDM O-ring Seal & Zinc-Plated Hardware



2"- 4" 235, 6" 200, 8"-12" 150 psi @ 73°F (23°C)

466E-247	2X1/2	3/4	1	10	046	37.61
466E-248	2X3/4	7/8	1	10	046	37.61
466E-249	2X1	1-1/8	1	10	046	37.61
466E-250	2X1-1/4	1-1/2	1	10	046	37.61
466E-251	2X1-1/2	1-1/2	1	10	046	37.61
466E-291	2-1/2X1-1/2	1-3/4	1	10	046	48.59
466E-333 <sup>1</sup>	3X1/2	7/8	1	10	046	48.59
466E-334	3X3/4	7/8	1	10	046	48.59
466E-335	3X1	1-1/8	1	10	046	48.59
466E-336 <sup>1</sup>	3X1-1/4	2-1/4	1	10	046	48.59
466E-337 <sup>1</sup>	3X1-1/2	2-1/4	1	10	046	48.59
466E-338	3X2	2-1/4	1	10	046	48.59
466E-415 <sup>1</sup>	4X1/2	1-1/8	1	10	046	62.23
466E-416 <sup>1</sup>	4X3/4	1-1/8	1	10	046	62.23
466E-417	4X1	1-1/8	1	8	046	62.23
466E-418 <sup>1</sup>	4X1-1/4	1-3/4	1	8	046	62.23
466E-419	4X1-1/2	1-3/4	1	8	046	62.23
466E-420	4X2	2-1/4	1	8	046	62.23
466E-421 <sup>1</sup>	4X2-1/2	3	1	4	046	75.73
466E-422	4X3	3	1	4	046	84.69
466E-523 <sup>1</sup>	6X1/2	1-1/8	1	4	046	111.64
466E-524 <sup>1</sup>	6X3/4	1-1/8	1	4	046	111.64
466E-525	6X1	1-1/8	1	4	046	111.64
466E-526 <sup>1</sup>	6X1-1/4	2-1/4	1	4	046	111.64
466E-527 <sup>1</sup>	6X1-1/2	1-1/8	1	4	046	111.64
466E-528	6X2	2-1/4	1	4	046	111.64
466E-529 <sup>1</sup>	6X2-1/2	3	1	4	046	124.15
466E-530	6X3	3	1	4	046	131.15
466E-532	6X4	4	1	4	046	138.19
466E-573	8X1/2	4	1	0	046	171.60
466E-574	8X3/4	4	1	0	046	171.60
466E-575	8X1	4	1	0	046	171.60
466E-576 <sup>1</sup>	8X1-1/4	4	1	0	046	171.60
466E-577 <sup>1</sup>	8X1-1/2	4	1	0	046	171.60
466E-578	8 X 2	4	1	0	046	171.60
466E-579	8X2-1/2	4	1	0	046	188.81
466E-580 <sup>1</sup>	8X3	4	1	0	046	198.11
466E-582	8X4	4	1	0	046	210.15
466E-585	8X6	6	1	0	046	233.19

Part Number	Size	Hole Saw Dia	Std Pk	Mstr Ctn	Prod Code	MSRP
<b>Clamp-On Saddle x Soc Single Outlet, PVC White (continued)</b> <b>with EPDM O-ring Seal &amp; Zinc-Plated Hardware</b>						
466E-624	10X4	4	1	0	046	277.49
466E-626	10X6	6	1	0	046	319.14
466E-664	12X4	4	1	0	046	347.83
466E-666	12X6	6	1	0	046	410.99
<sup>1</sup> Outlet-sized with Bushing						

Clamp-On Saddle x Soc Single Outlet, PVC White

with EPDM O-ring & Seal & SS Hardware



2"- 4" 235, 6" 200, 8"-12" 150 psi @ 73°F (23°C)

466SE-247	2X1/2	3/4	1	10	046	59.19
466SE-248	2X3/4	7/8	1	10	046	59.19
466SE-249	2X1	1-1/8	1	10	046	59.19
466SE-250	2X1-1/4	1-1/2	1	10	046	59.19
466SE-251	2X1-1/2	1-1/2	1	10	046	59.19
466SE-291	2-1/2X1-1/2	1-3/4	1	10	046	79.60
466SE-333 <sup>1</sup>	3X1/2	7/8	1	10	046	79.60
466SE-334	3X3/4	7/8	1	10	046	79.60
466SE-335	3X1	1-1/8	1	10	046	79.60
466SE-336 <sup>1</sup>	3X1-1/4	2-1/4	1	10	046	79.60
466SE-337 <sup>1</sup>	3X1-1/2	2-1/4	1	10	046	79.60
466SE-338	3X2	2-1/4	1	10	046	79.60
466SE-415 <sup>1</sup>	4X1/2	1-1/8	1	10	046	98.27
466SE-416 <sup>1</sup>	4X3/4	1-1/8	1	10	046	98.27
466SE-417	4X1	1-1/8	1	8	046	98.27
466SE-418 <sup>1</sup>	4X1-1/4	1-3/4	1	8	046	98.27
466SE-419	4X1-1/2	1-3/4	1	8	046	98.27
466SE-420	4X2	2-1/4	1	8	046	98.27
466SE-421 <sup>1</sup>	4X2-1/2	3	1	4	046	106.28
466SE-422	4X3	3	1	4	046	117.73
466SE-523 <sup>1</sup>	6X1/2	1-1/8	1	4	046	167.22
466SE-524 <sup>1</sup>	6X3/4	1-1/8	1	4	046	167.22
466SE-525	6X1	1-1/8	1	4	046	167.22
466SE-526 <sup>1</sup>	6X1-1/4	2-1/4	1	4	046	167.22
466SE-527 <sup>1</sup>	6X1-1/2	2-1/4	1	4	046	167.22
466SE-528	6X2	2-1/4	1	4	046	167.22
466SE-529 <sup>1</sup>	6X2-1/2	3	1	4	046	175.64
466SE-530	6X3	3	1	4	046	181.18
466SE-532	6X4	4	1	4	046	190.01
466SE-573	8X1/2	4	1	0	046	242.89
466SE-574 <sup>1</sup>	8X3/4	4	1	0	046	242.89
466SE-575 <sup>1</sup>	8X1	4	1	0	046	242.89
466SE-576	8X1-1/4	4	1	0	046	242.89
466SE-577 <sup>1</sup>	8X1-1/2	4	1	0	046	242.89
466SE-578	8X2	4	1	0	046	242.89
466SE-579 <sup>1</sup>	8X2-1/2	4	1	0	046	267.17
466SE-580 <sup>1</sup>	8X3	4	1	0	046	280.47
466SE-582	8X4	4	1	0	046	297.24
466SE-585	8X6	6	1	0	046	329.99

Schedule 40 Fittings Product

Clamp-On Saddles

Clamp-On Saddles

Part Number	Size	Hole Saw Dia	Std Pk	Mstr Ctn	Prod Code	MSRP
Clamp-On Saddle x Soc Single Outlet, PVC White (continued) with EPDM O-ring & Seal & SS Hardware						
466SE-624	10X4	4	1	0	046	392.61
466SE-626	10X6	6	1	0	046	451.52
466SE-664	12X4	4	1	0	046	492.06
466SE-666	12X6	4	1	0	046	570.85

<sup>1</sup> Outlet-sized with Bushing



Clamp-On Saddle x SR Thread Single Outlet, PVC White

with Buna-N O-ring Seal & Zinc-Plated Hardware

2" - 4" 235, 6" 200, 8"-12" 150 psi @ 73°F (23°C)

467-247SR	2X1/2	3/4	1	10	046	39.00
467-248SR	2X3/4	7/8	1	10	046	39.00
467-249SR	2X1	1-1/8	1	10	046	39.00
467-250SR	2X1-1/4	1-1/2	1	10	046	39.00
467-251SR	2X1-1/2	1-1/2	1	10	046	39.00
467-291SR	2-1/2X1-1/2	1-3/4	1	10	046	53.35
467-333SR <sup>1</sup>	3X1/2	7/8	1	10	046	53.35
467-334SR	3X3/4	7/8	1	10	046	53.35
467-335SR	3X1	1-1/8	1	10	046	53.35
467-336SR <sup>1</sup>	3X1-1/4	2-1/4	1	10	046	53.35
467-337SR <sup>1</sup>	3X1-1/2	2-1/4	1	10	046	53.35
467-338SR	3X2	2-1/4	1	10	046	53.35
467-415SR <sup>1</sup>	4X1/2	1-1/8	1	10	046	67.17
467-416SR <sup>1</sup>	4X3/4	1-1/8	1	10	046	67.17
467-417SR	4X1	1-1/8	1	8	046	67.17
467-418SR <sup>1</sup>	4X1-1/4	1-3/4	1	8	046	67.17
467-419SR	4X1-1/2	1-3/4	1	8	046	67.17
467-420SR	4X2	2-1/4	1	8	046	67.17
467-421SR <sup>1</sup>	4X2-1/2	3	1	4	046	72.65
467-422SR	4X3	3	1	4	046	79.23
467-523SR <sup>1</sup>	6X1/2	1-1/8	1	4	046	117.29
467-524SR <sup>1</sup>	6X3/4	1-1/8	1	4	046	117.29
467-525SR	6X1	1-1/8	1	4	046	117.29
467-526SR <sup>1</sup>	6X1-1/4	2-1/4	1	4	046	117.29
467-527SR <sup>1</sup>	6X1-1/2	2-1/4	1	4	046	117.29
467-528SR	6X2	2-1/4	1	4	046	117.29
467-529SR <sup>1</sup>	6X2-1/2	3	1	4	046	138.41
467-530SR	6X3	3	1	4	046	147.27
467-532SR	6X4	4	1	4	046	153.31
467-573SR <sup>1</sup>	8X1/2	4	1	0	046	178.77
467-574SR <sup>1</sup>	8X3/4	4	1	0	046	178.77
467-575SR <sup>1</sup>	8X1	4	1	0	046	178.77
467-576SR <sup>1</sup>	8X1-1/4	4	1	0	046	178.77
467-577SR <sup>1</sup>	8X1-1/2	4	1	0	046	178.77
467-578SR <sup>1</sup>	8X2	4	1	0	046	178.77
467-579SR <sup>1</sup>	8X2-1/2	4	1	0	046	196.61
467-580SR <sup>1</sup>	8X3	4	1	0	046	206.54

Suitable for Oil-Free air handling to 25 psi, not for distribution of compressed air or gas

Part Number	Size	Hole Saw Dia	Std Pk	Mstr Ctn	Prod Code	MSRP
Clamp-On Saddle x SR Thread Single Outlet, PVC White (continued) with Buna-N O-ring Seal & Zinc-Plated Hardware						
467-582SR	8X4	4	1	0	046	218.89
467-585SR	8X6	6	1	0	046	240.79
467-624SR	10X4	4	1	0	046	286.61
467-626SR	10X6	6	1	0	046	329.44
467-664SR	12X4	4	1	0	046	359.02
467-666SR	12X6	6	1	0	046	416.44

<sup>1</sup> Outlet-sized with Bushing



Clamp-On Saddle x SR Thread Single Outlet, PVC White

with Buna-N O-ring Seal & SS Hardware

2" - 4" 235, 6" 200, 8"-12" 150 psi @ 73°F (23°C)

467S-247SR	2X1/2	3/4	1	10	046	63.79
467S-248SR	2X3/4	7/8	1	10	046	63.79
467S-249SR	2X1	1-1/8	1	10	046	63.79
467S-250SR	2X1-1/4	1-1/2	1	10	046	63.79
467S-251SR	2X1-1/2	1-1/2	1	10	046	63.79
467S-291SR	2-1/2X1-1/2	1-3/4	1	10	046	85.78
467S-333SR <sup>1</sup>	3X1/2	7/8	1	10	046	85.78
467S-334SR	3X3/4	7/8	1	10	046	85.78
467S-335SR	3X1	1-1/8	1	10	046	85.78
467S-336SR <sup>1</sup>	3X1-1/4	2-1/4	1	10	046	85.78
467S-337SR <sup>1</sup>	3X1-1/2	2-1/4	1	10	046	85.78
467S-338SR	3X2	2-1/4	1	10	046	85.78
467S-415SR <sup>1</sup>	4X1/2	1-1/8	1	10	046	107.94
467S-416SR <sup>1</sup>	4X3/4	1-1/8	1	10	046	107.94
467S-417SR	4X1	1-1/8	1	8	046	107.94
467S-418SR <sup>1</sup>	4X1-1/4	1-3/4	1	8	046	107.94
467S-419SR	4X1-1/2	1-3/4	1	8	046	107.94
467S-420SR	4X2	2-1/4	1	8	046	107.94
467S-421SR <sup>1</sup>	4X2-1/2	3	1	4	046	114.77
467S-422SR	4X3	3	1	4	046	121.22
467S-523SR <sup>1</sup>	6X1/2	1-1/8	1	4	046	179.85
467S-524SR <sup>1</sup>	6X3/4	1-1/8	1	4	046	179.85
467S-525SR	6X1	1-1/8	1	4	046	179.85
467S-526SR <sup>1</sup>	6X1-1/4	2-1/4	1	4	046	179.85
467S-527SR <sup>1</sup>	6X1-1/2	2-1/4	1	4	046	179.85
467S-528SR	6X2	2-1/4	1	4	046	179.85
467S-529SR <sup>1</sup>	6X2-1/2	3	1	4	046	193.55
467S-530SR	6X3	3	1	4	046	199.21
467S-532SR	6X4	4	1	4	046	206.94
467S-573SR <sup>1</sup>	8X1/2	4	1	0	046	259.02
467S-574SR <sup>1</sup>	8X3/4	4	1	0	046	259.02
467S-575SR <sup>1</sup>	8X1	4	1	0	046	259.02
467S-576SR <sup>1</sup>	8X1-1/4	4	1	0	046	259.02
467S-577SR <sup>1</sup>	8X1-1/2	4	1	0	046	259.02
467S-578SR <sup>1</sup>	8X2	4	1	0	046	259.02
467S-579SR <sup>1</sup>	8X2-1/2	4	1	0	046	281.31



**Schedule 40 Fittings Product**  
**Clamp-On Saddles**

**Clamp-On Saddles**

Part Number	Size	Hole Saw Dia	Std Pk	Mstr Ctn	Prod Code	MSRP
<b>Clamp-On Saddle x SR Thread Single Outlet, PVC White</b> (continued)						
<b>with Buna-N O-ring Seal &amp; SS Hardware</b>						
467S-580SR <sup>1</sup>	<b>8X3</b>	4	1	0	046	295.35
467S-582SR	<b>8X4</b>	4	1	0	046	313.09
467S-585SR	<b>8X6</b>	6	1	0	046	344.23
467S-624SR	<b>10X4</b>	4	1	0	046	409.72
467S-626SR	<b>10X6</b>	6	1	0	046	471.16
467S-664SR	<b>12X4</b>	4	1	0	046	513.61
467S-666SR	<b>12X6</b>	6	1	0	046	595.55

<sup>1</sup> Outlet-sized with Bushing



**Clamp-On Saddle x SR Thread Single Outlet, PVC White**

**with EPDM O-ring Seal & Zinc-Plated Hardware**

2"- 4" 235, 6" 200, 8"-12" 150 psi @ 73°F (23°C)

467E-247SR	<b>2X1/2</b>	3/4	1	10	046	41.97
467E-248SR	<b>2X3/4</b>	7/8	1	10	046	41.97
467E-249SR	<b>2X1</b>	1-1/8	1	10	046	41.97
467E-250SR	<b>2X1-1/4</b>	1-1/2	1	10	046	41.97
467E-251SR	<b>2X1-1/2</b>	1-1/2	1	10	046	41.97
467E-291SR	<b>2-1/2X1-1/2</b>	1-3/4	1	10	046	58.53
467E-333SR <sup>1</sup>	<b>3X1/2</b>	7/8	1	10	046	58.53
467E-334SR	<b>3X3/4</b>	7/8	1	10	046	58.53
467E-335SR	<b>3X1</b>	1-1/8	1	10	046	58.53
467E-336SR <sup>1</sup>	<b>3X1-1/4</b>	2-1/4	1	10	046	58.53
467E-337SR <sup>1</sup>	<b>3X1-1/2</b>	2-1/4	1	10	046	58.53
467E-338SR	<b>3X2</b>	2-1/4	1	10	046	58.53
467E-415SR <sup>1</sup>	<b>4X1/2</b>	1-1/8	1	10	046	73.18
467E-416SR <sup>1</sup>	<b>4X3/4</b>	1-1/8	1	10	046	73.18
467E-417SR	<b>4X1</b>	1-1/8	1	8	046	73.18
467E-418SR <sup>1</sup>	<b>4X1-1/4</b>	1-3/4	1	8	046	73.18
467E-419SR	<b>4X1-1/2</b>	1-3/4	1	8	046	73.18
467E-420SR	<b>4X2</b>	2-1/4	1	8	046	73.18
467E-421SR <sup>1</sup>	<b>4X2-1/2</b>	3	1	4	046	78.41
467E-422SR	<b>4X3</b>	3	1	4	046	84.05
467E-523SR <sup>1</sup>	<b>6X1/2</b>	1-1/8	1	4	046	122.09
467E-524SR <sup>1</sup>	<b>6X3/4</b>	1-1/8	1	4	046	122.09
467E-525SR	<b>6X1</b>	1-1/8	1	4	046	122.09
467E-526SR <sup>1</sup>	<b>6X1-1/4</b>	2-1/4	1	4	046	122.09
467E-527SR <sup>1</sup>	<b>6X1-1/2</b>	2-1/4	1	4	046	122.09
467E-528SR	<b>6X2</b>	2-1/4	1	4	046	122.09
467E-529SR <sup>1</sup>	<b>6X2-1/2</b>	3	1	4	046	151.23
467E-530SR	<b>6X3</b>	3	1	4	046	159.12
467E-532SR	<b>6X4</b>	4	1	4	046	167.13
467E-573SR <sup>1</sup>	<b>8X1/2</b>	4	1	0	046	184.99
467E-574SR <sup>1</sup>	<b>8X3/4</b>	4	1	0	046	184.99
467E-575SR <sup>1</sup>	<b>8X1</b>	4	1	0	046	184.99
467E-576SR <sup>1</sup>	<b>8X1-1/4</b>	4	1	0	046	184.99

Part Number	Size	Hole Saw Dia	Std Pk	Mstr Ctn	Prod Code	MSRP
<b>Clamp-On Saddle x SR Thread Single Outlet, PVC White</b> (continued)						
<b>with EPDM O-ring Seal &amp; Zinc-Plated Hardware</b>						
467E-577SR <sup>1</sup>	<b>8X1-1/2</b>	4	1	0	046	184.99
467E-578SR <sup>1</sup>	<b>8X2</b>	4	1	0	046	184.99
467E-579SR <sup>1</sup>	<b>8X2-1/2</b>	4	1	0	046	203.48
467E-580SR <sup>1</sup>	<b>8X3</b>	4	1	0	046	213.71
467E-582SR	<b>8X4</b>	4	1	0	046	226.53
467E-585SR	<b>8X6</b>	6	1	0	046	251.31
467E-624SR	<b>10X4</b>	4	1	0	046	299.03
467E-626SR	<b>10X6</b>	6	1	0	046	343.83
467E-664SR	<b>12X4</b>	4	1	0	046	374.87
467E-666SR	<b>12X6</b>	6	1	0	046	434.85

<sup>1</sup> Outlet-sized with Bushing

**Clamp-On Saddle x SR Thread Single Outlet, PVC White**

**with EPDM O-ring Seal & SS Hardware**

2"- 4" 235, 6" 200, 8"-12" 150 psi @ 73°F (23°C)

467SE-247SR	<b>2X1/2</b>	3/4	1	10	046	65.72
467SE-248SR	<b>2X3/4</b>	7/8	1	10	046	65.72
467SE-249SR	<b>2X1</b>	1-1/8	1	10	046	65.72
467SE-250SR	<b>2X1-1/4</b>	1-1/2	1	10	046	65.72
467SE-251SR	<b>2X1-1/2</b>	1-1/2	1	10	046	65.72
467SE-291SR	<b>2-1/2X1-1/2</b>	1-3/4	1	10	046	88.18
467SE-333SR <sup>1</sup>	<b>3X1/2</b>	7/8	1	10	046	88.18
467SE-334SR	<b>3X3/4</b>	7/8	1	10	046	88.18
467SE-335SR	<b>3X1</b>	1-1/8	1	10	046	88.18
467SE-336SR <sup>1</sup>	<b>3X1-1/4</b>	2-1/4	1	10	046	88.18
467SE-337SR <sup>1</sup>	<b>3X1-1/2</b>	2-1/4	1	10	046	88.18
467SE-338SR	<b>3X2</b>	2-1/4	1	10	046	88.18
467SE-415SR <sup>1</sup>	<b>4X1/2</b>	1-1/8	1	10	046	110.64
467SE-416SR <sup>1</sup>	<b>4X3/4</b>	1-1/8	1	10	046	110.64
467SE-417SR	<b>4X1</b>	1-1/8	1	8	046	110.64
467SE-418SR <sup>1</sup>	<b>4X1-1/4</b>	1-3/4	1	8	046	110.64
467SE-419SR	<b>4X1-1/2</b>	1-3/4	1	8	046	110.64
467SE-420SR	<b>4X2</b>	2-1/4	1	8	046	110.64
467SE-421SR <sup>1</sup>	<b>4X2-1/2</b>	3	1	4	046	115.37
467SE-422SR	<b>4X3</b>	3	1	4	046	121.76
467SE-523SR <sup>1</sup>	<b>6X1/2</b>	1-1/8	1	4	046	185.92
467SE-524SR <sup>1</sup>	<b>6X3/4</b>	1-1/8	1	4	046	185.92
467SE-525SR	<b>6X1</b>	1-1/8	1	4	046	185.92
467SE-526SR <sup>1</sup>	<b>6X1-1/4</b>	2-1/4	1	4	046	185.92
467SE-527SR <sup>1</sup>	<b>6X1-1/2</b>	2-1/4	1	4	046	185.92
467SE-528SR	<b>6X2</b>	2-1/4	1	4	046	185.92
467SE-529SR <sup>1</sup>	<b>6X2-1/2</b>	3	1	4	046	201.81
467SE-530SR	<b>6X3</b>	3	1	4	046	209.34
467SE-532SR	<b>6X4</b>	4	1	4	046	213.12
467SE-573SR <sup>1</sup>	<b>8X1/2</b>	4	1	0	046	266.73
467SE-574SR <sup>1</sup>	<b>8X3/4</b>	4	1	0	046	266.73
467SE-575SR <sup>1</sup>	<b>8X1</b>	4	1	0	046	266.73



Schedule 40 Fittings Product

Clamp-On Saddles

Clamp-On Saddles

Part Number	Size	Hole Saw Dia	Std Pk	Mstr Ctn	Prod Code	MSRP
<b>Clamp-On Saddle x SR Thread Single Outlet, PVC White</b>						
(continued)						
<b>with EPDM O-ring Seal &amp; SS Hardware</b>						
467SE-576SR <sup>1</sup>	8X1-1/4	4	1	0	046	266.73
467SE-577SR <sup>1</sup>	8X1-1/2	4	1	0	046	266.73
467SE-578SR <sup>1</sup>	8X2	4	1	0	046	266.73
467SE-579SR <sup>1</sup>	8X2-1/2	4	1	0	046	293.54
467SE-580SR <sup>1</sup>	8X3	4	1	0	046	308.14
467SE-582SR	8X4	4	1	0	046	326.73
467SE-585SR	8X6	6	1	0	046	359.33
467SE-624SR	10X4	4	1	0	046	427.45
467SE-626SR	10X6	6	1	0	046	491.88
467SE-666SR	12X6	6	1	0	046	621.75

<sup>1</sup> Outlet-sized with Bushing



Clamp-On Saddle x Soc Double Outlet, PVC White

with Buna-N O-ring Seal & Zinc-Plated Hardware

2"- 4" 235, 6" 200, 8"-12" 150 psi @ 73°F (23°C)

468-247	2X1/2	3/4	1	10	046	42.16
468-248	2X3/4	7/8	1	10	046	42.16
468-249	2X1	1-1/8	1	10	046	42.16
468-250	2X1-1/4	1-1/2	1	10	046	42.16
468-251	2X1-1/2	1-1/2	1	10	046	42.16
468-291	2-1/2X1-1/2	1-3/4	1	10	046	56.27
468-333 <sup>1</sup>	3X1/2	7/8	1	10	046	56.27
468-334	3X3/4	7/8	1	10	046	56.27
468-335	3X1	1-1/8	1	10	046	56.27
468-336 <sup>1</sup>	3X1-1/4	2-1/4	1	10	046	56.27
468-337 <sup>1</sup>	3X1-1/2	2-1/4	1	10	046	56.27
468-338	3X2	2-1/4	1	10	046	56.27
468-415 <sup>1</sup>	4X1/2	1-1/8	1	10	046	71.32
468-416 <sup>1</sup>	4X3/4	1-1/8	1	10	046	71.32
468-417	4X1	1-1/8	1	8	046	71.32
468-418 <sup>1</sup>	4X1-1/4	1-3/4	1	8	046	71.32
468-419	4X1-1/2	1-3/4	1	8	046	71.32
468-420	4X2	2-1/4	1	8	046	71.32
468-421 <sup>1</sup>	4X2-1/2	3	1	4	046	74.65
468-422	4X3	3	1	4	046	84.26
468-523 <sup>1</sup>	6X1/2	1-1/8	1	4	046	117.42
468-524 <sup>1</sup>	6X3/4	1-1/8	1	4	046	117.42
468-525	6X1	1-1/8	1	4	046	117.42
468-526 <sup>1</sup>	6X1-1/4	2-1/4	1	4	046	117.42
468-527 <sup>1</sup>	6X1-1/2	2-1/4	1	4	046	117.42
468-528	6X2	2-1/4	1	4	046	117.42
468-529 <sup>1</sup>	6X2-1/2	3	1	4	046	133.64
468-530	6X3	3	1	4	046	139.72
468-532	6X4	4	1	4	046	150.19
468-573 <sup>1</sup>	8X1/2	4	1	0	046	168.52

Suitable for Oil-Free air handling to 25 psi, not for distribution of compressed air or gas

Part Number	Size	Hole Saw Dia	Std Pk	Mstr Ctn	Prod Code	MSRP
<b>Clamp-On Saddle x Soc Double Outlet, PVC White (continued)</b>						
<b>with Buna-N O-ring Seal &amp; Zinc-Plated Hardware</b>						
468-574 <sup>1</sup>	8X3/4	4	1	0	046	168.52
468-575 <sup>1</sup>	8X1	4	1	0	046	168.52
468-576 <sup>1</sup>	8X1-1/4	4	1	0	046	168.52
468-577 <sup>1</sup>	8X1-1/2	4	1	0	046	168.52
468-578 <sup>1</sup>	8X2	4	1	0	046	168.52
468-579 <sup>1</sup>	8X2-1/2	4	1	0	046	185.31
468-580 <sup>1</sup>	8X3	4	1	0	046	194.62
468-582	8X4	4	1	0	046	206.35
468-585	8X6	6	1	0	046	228.92
468-624	10X4	4	1	0	046	272.42
468-626	10X6	6	1	0	046	313.19
468-664	12X4	4	1	0	046	341.49
468-666	12X6	6	1	0	046	396.18

<sup>1</sup> Outlet-sized with Bushing

Clamp-On Saddle x Soc Double Outlet, PVC White

with Buna-N O-ring Seal & SS Hardware

2"- 4" 235, 6" 200, 8"-12" 150 psi @ 73°F (23°C)

468S-247	2X1/2	3/4	1	10	046	67.65
468S-248	2X3/4	7/8	1	10	046	67.65
468S-249	2X1	1-1/8	1	10	046	67.65
468S-250	2X1-1/4	1-1/2	1	10	046	67.65
468S-251	2X1-1/2	1-1/2	1	10	046	67.65
468S-291	2-1/2X1-1/2	1-3/4	1	10	046	90.33
468S-333 <sup>1</sup>	3X1/2	7/8	1	10	046	90.33
468S-334	3X3/4	7/8	1	10	046	90.33
468S-335	3X1	1-1/8	1	10	046	90.33
468S-336 <sup>1</sup>	3X1-1/4	2-1/4	1	10	046	90.33
468S-337 <sup>1</sup>	3X1-1/2	2-1/4	1	10	046	90.33
468S-338	3X2	2-1/4	1	10	046	90.33
468S-415 <sup>1</sup>	4X1/2	1-1/8	1	10	046	112.73
468S-416 <sup>1</sup>	4X3/4	1-1/8	1	10	046	112.73
468S-417	4X1	1-1/8	1	8	046	112.73
468S-418 <sup>1</sup>	4X1-1/4	1-3/4	1	8	046	112.73
468S-419	4X1-1/2	1-3/4	1	8	046	112.73
468S-420	4X2	2-1/4	1	8	046	112.73
468S-421 <sup>1</sup>	4X2-1/2	3	1	4	046	118.47
468S-422	4X3	3	1	4	046	129.99
468S-523 <sup>1</sup>	6X1/2	1-1/8	1	4	046	186.20
468S-524 <sup>1</sup>	6X3/4	1-1/8	1	4	046	186.20
468S-525	6X1	1-1/8	1	4	046	186.20
468S-526 <sup>1</sup>	6X1-1/4	2-1/4	1	4	046	186.20
468S-527 <sup>1</sup>	6X1-1/2	2-1/4	1	4	046	186.20
468S-528	6X2	2-1/4	1	4	046	186.20
468S-529 <sup>1</sup>	6X2-1/2	3	1	4	046	194.56
468S-530	6X3	3	1	4	046	197.91
468S-532	6X4	4	1	4	046	204.34
468S-573 <sup>1</sup>	8X1/2	4	1	0	046	250.48

**Schedule 40 Fittings Product**  
**Clamp-On Saddles**

**Clamp-On Saddles**

Part Number	Size	Hole Saw Dia	Std Pk	Mstr Ctn	Prod Code	MSRP
<b>Clamp-On Saddle x Soc Double Outlet, PVC White (continued)</b> <b>with Buna-N O-ring Seal &amp; SS Hardware</b>						
468S-574 <sup>1</sup>	8X3/4	4	1	0	046	250.48
468S-575 <sup>1</sup>	8X1	4	1	0	046	250.48
468S-576 <sup>1</sup>	8X1-1/4	4	1	0	046	250.48
468S-577 <sup>1</sup>	8X1-1/2	4	1	0	046	250.48
468S-578 <sup>1</sup>	8X2	4	1	0	046	250.48
468S-579 <sup>1</sup>	8X2-1/2	4	1	0	046	275.49
468S-580 <sup>1</sup>	8X3	4	1	0	046	289.44
468S-582	8X4	4	1	0	046	306.66
468S-585	8X6	6	1	0	046	337.27
468S-624	10X4	4	1	0	046	401.25
468S-626	10X6	6	1	0	046	461.56
468S-664	12X4	4	1	0	046	503.08
468S-666	12X6	6	1	0	046	583.54

<sup>1</sup> Outlet-sized with Bushing.



Clamp-On Saddle x Soc Double Outlet, PVC White

**with EPDM O-ring Seal & Zinc-Plated Hardware**

2"- 4" 235, 6" 200, 8"-12" 150 psi @ 73°F (23°C)

468E-247	2X1/2	3/4	1	10	046	44.34
468E-248	2X3/4	7/8	1	10	046	44.34
468E-249	2X1	1-1/8	1	10	046	44.34
468E-250	2X1-1/4	1-1/2	1	10	046	44.34
468E-251	2X1-1/2	1-1/2	1	10	046	44.34
468E-291	2-1/2X1-1/2	1-3/4	1	10	046	61.22
468E-333 <sup>1</sup>	3X1/2	7/8	1	10	046	61.22
468E-334	3X3/4	7/8	1	10	046	61.22
468E-335	3X1	1-1/8	1	10	046	61.22
468E-336 <sup>1</sup>	3X1-1/4	2-1/4	1	10	046	61.22
468E-337 <sup>1</sup>	3X1-1/2	2-1/4	1	10	046	61.22
468E-338	3X2	2-1/4	1	10	046	61.22
468E-415 <sup>1</sup>	4X1/2	1-1/8	1	10	046	74.45
468E-416 <sup>1</sup>	4X3/4	1-1/8	1	10	046	74.45
468E-417	4X1	1-1/8	1	8	046	74.45
468E-418 <sup>1</sup>	4X1-1/4	1-3/4	1	8	046	74.45
468E-419	4X1-1/2	1-3/4	1	8	046	74.45
468E-420	4X2	2-1/4	1	8	046	74.45
468E-421 <sup>1</sup>	4X2-1/2	3	1	4	046	79.83
468E-422	4X3	3	4	0	046	88.97
468E-523 <sup>1</sup>	6X1/2	1-1/8	1	4	046	124.99
468E-524 <sup>1</sup>	6X3/4	1-1/8	1	4	046	124.99
468E-525	6X1	1-1/8	1	4	046	124.99
468E-526 <sup>1</sup>	6X1-1/4	2-1/4	1	4	046	124.99
468E-527 <sup>1</sup>	6X1-1/2	2-1/4	1	4	046	124.99
468E-528	6X2	2-1/4	1	4	046	124.99
468E-529 <sup>1</sup>	6X2-1/2	3	1	4	046	139.78
468E-530	6X3	3	1	4	046	150.38

Part Number	Size	Hole Saw Dia	Std Pk	Mstr Ctn	Prod Code	MSRP
-------------	------	--------------	--------	----------	-----------	------

**Clamp-On Saddle x Soc Double Outlet, PVC White (continued)**  
**with EPDM O-ring Seal & Zinc-Plated Hardware**

468E-532	6X4	4	1	4	046	158.44
468E-573 <sup>1</sup>	8X1/2	4	1	0	046	188.57
468E-574 <sup>1</sup>	8X3/4	4	1	0	046	188.57
468E-575 <sup>1</sup>	8X1	4	1	0	046	188.57
468E-576 <sup>1</sup>	8X1-1/4	4	1	0	046	188.57
468E-577 <sup>1</sup>	8X1-1/2	4	1	0	046	188.57
468E-578 <sup>1</sup>	8X2	4	1	0	046	188.57
468E-579 <sup>1</sup>	8X2-1/2	4	1	0	046	207.52
468E-580 <sup>1</sup>	8X3	4	1	0	046	217.96
468E-582	8X4	4	1	0	046	231.07
468E-585	8X6	6	1	0	046	254.08
468E-624	10X4	4	1	0	046	302.43
468E-626	10X6	6	1	0	046	347.63
468E-664	12X4	4	1	0	046	379.09
468E-666	12X6	6	1	0	046	439.59

<sup>1</sup> Outlet-sized with Bushing



Clamp-On Saddle x Soc Double Outlet, PVC White

**with EPDM O-ring Seal & SS Hardware**

2"- 4" 235, 6" 200, 8"-12" 150 psi @ 73°F (23°C)

468SE-247	2X1/2	3/4	1	10	046	72.35
468SE-248	2X3/4	7/8	1	10	046	72.35
468SE-249	2X1	1-1/8	1	10	046	72.35
468SE-250	2X1-1/4	1-1/2	1	10	046	72.35
468SE-251	2X1-1/2	1-1/2	1	10	046	72.35
468SE-291	2-1/2X1-1/2	1-3/4	1	10	046	95.67
468SE-333 <sup>1</sup>	3X1/2	7/8	1	10	046	95.67
468SE-334	3X3/4	7/8	1	10	046	95.67
468SE-335	3X1	1-1/8	1	10	046	95.67
468SE-336 <sup>1</sup>	3X1-1/4	2-1/4	1	10	046	95.67
468SE-337 <sup>1</sup>	3X1-1/2	2-1/4	1	10	046	95.67
468SE-338	3X2	2-1/4	1	10	046	95.67
468SE-415 <sup>1</sup>	4X1/2	1-1/8	1	10	046	119.42
468SE-416 <sup>1</sup>	4X3/4	1-1/8	1	10	046	119.42
468SE-417	4X1	1-1/8	1	8	046	119.42
468SE-418 <sup>1</sup>	4X1-1/4	1-3/4	1	8	046	119.42
468SE-419	4X1-1/2	1-3/4	1	8	046	119.42
468SE-420	4X2	2-1/4	1	8	046	119.42
468SE-421 <sup>1</sup>	4X2-1/2	3	1	4	046	130.36
468SE-422	4X3	3	4	0	046	138.96
468SE-523 <sup>1</sup>	6X1/2	1-1/8	1	4	046	199.07
468SE-524 <sup>1</sup>	6X3/4	1-1/8	1	4	046	199.07
468SE-525	6X1	1-1/8	1	4	046	199.07
468SE-526 <sup>1</sup>	6X1-1/4	2-1/4	1	4	046	199.07
468SE-527 <sup>1</sup>	6X1-1/2	2-1/4	1	4	046	199.07
468SE-528	6X2	2-1/4	1	4	046	199.07
468SE-529 <sup>1</sup>	6X2-1/2	3	1	4	046	204.45
468SE-530	6X3	3	1	4	046	211.56



Schedule 40 Fittings Product

Clamp-On Saddles

Clamp-On Saddles

Part Number	Size	Hole Saw Dia	Std Pk	Mstr Ctn	Prod Code	MSRP
Clamp-On Saddle x Soc Double Outlet, PVC White (continued) with EPDM O-ring Seal & SS Hardware						
468SE-532	6X4	4	1	4	046	223.75
468SE-573 <sup>1</sup>	8X1/2	4	1	0	046	283.62
468SE-574 <sup>1</sup>	8X3/4	4	1	0	046	283.62
468SE-575 <sup>1</sup>	8X1	4	1	0	046	283.62
468SE-576 <sup>1</sup>	8X1-1/4	4	1	0	046	283.62
468SE-577 <sup>1</sup>	8X1-1/2	4	1	0	046	283.62
468SE-578 <sup>1</sup>	8X2	4	1	0	046	283.62
468SE-579 <sup>1</sup>	8X2-1/2	4	1	0	046	312.04
468SE-580 <sup>1</sup>	8X3	4	1	0	046	322.69
468SE-582	8X4	4	1	0	046	347.72
468SE-585	8X6	6	1	0	046	385.42
468SE-624	10X4	4	1	0	046	458.60
468SE-626	10X6	6	1	0	046	527.34
468SE-664	12X4	4	1	0	046	575.08
468SE-666	12X6	6	1	0	046	666.95

<sup>1</sup> Outlet-sized with Bushing



Clamp-On Saddle x SR Thread Double Outlet, PVC White

with Buna-N O-ring Seal & Zinc-Plated Hardware

2"- 4" 235, 6" 200, 8"-12" 150 psi @ 73°F (23°C)

469-247SR	2X1/2	3/4	1	10	046	47.65
469-248SR	2X3/4	7/8	1	10	046	47.65
469-249SR	2X1	1-1/8	1	10	046	47.65
469-250SR	2X1-1/4	1-1/2	1	10	046	47.65
469-251SR	2X1-1/2	1-1/2	1	10	046	47.65
469-291SR	2-1/2X1-1/2	1-3/4	1	10	046	63.29
469-333SR <sup>1</sup>	3X1/2	7/8	1	10	046	63.29
469-334SR	3X3/4	7/8	1	10	046	63.29
469-335SR	3X1	1-1/8	1	10	046	63.29
469-336SR <sup>1</sup>	3X1-1/4	2-1/4	1	10	046	63.29
469-337SR <sup>1</sup>	3X1-1/2	2-1/4	1	10	046	63.29
469-338SR	3X2	2-1/4	1	10	046	63.29
469-415SR <sup>1</sup>	4X1/2	1-1/8	1	10	046	95.01
469-416SR <sup>1</sup>	4X3/4	1-1/8	1	10	046	95.01
469-417SR	4X1	1-1/8	1	8	046	95.01
469-418SR <sup>1</sup>	4X1-1/4	1-3/4	1	8	046	95.01
469-419SR	4X1-1/2	1-3/4	1	8	046	95.01
469-420SR	4X2	2-1/4	1	8	046	95.01
469-421SR <sup>1</sup>	4X2-1/2	3	1	4	046	102.08
469-422SR	4X3	3	1	4	046	243.53
469-523SR <sup>1</sup>	6X1/2	1-1/8	1	4	046	154.89
469-524SR <sup>1</sup>	6X3/4	1-1/8	1	4	046	154.89
469-525SR	6X1	1-1/8	1	4	046	154.89
469-526SR <sup>1</sup>	6X1-1/4	2-1/4	1	4	046	154.89
469-527SR <sup>1</sup>	6X1-1/2	2-1/4	1	4	046	154.89
469-528SR	6X2	2-1/4	1	4	046	154.89

Suitable for Oil-Free air handling to 25 psi, not for distribution of compressed air or gas

Part Number	Size	Hole Saw Dia	Std Pk	Mstr Ctn	Prod Code	MSRP
Clamp-On Saddle x SR Thread Double Outlet, PVC White (continued) with Buna-N O-ring Seal & Zinc-Plated Hardware						
469-529SR <sup>1</sup>	6X2-1/2	3	1	4	046	185.76
469-530SR	6X3	3	1	4	046	195.01
469-532SR	6X4	4	1	4	046	204.20
469-573SR <sup>1</sup>	8X1/2	4	1	0	046	227.02
469-574SR <sup>1</sup>	8X3/4	4	1	0	046	227.02
469-575SR <sup>1</sup>	8X1	4	1	0	046	227.02
469-576SR <sup>1</sup>	8X1-1/4	4	1	0	046	227.02
469-577SR <sup>1</sup>	8X1-1/2	4	1	0	046	227.02
469-578SR <sup>1</sup>	8X2	4	1	0	046	227.02
469-579SR <sup>1</sup>	8X2-1/2	4	1	0	046	251.31
469-580SR <sup>1</sup>	8X3	4	1	0	046	263.45
469-582SR	8X4	4	1	0	046	279.40
469-585SR	8X6	6	1	0	046	307.29
469-624SR	10X4	4	1	0	046	365.68
469-626SR	10X6	6	1	0	046	420.26
469-664SR	12X4	4	1	0	046	493.12
469-666SR	12X6	6	1	0	046	531.65

<sup>1</sup> Outlet-sized with Bushing



Clamp-On Saddle x SR Thread Double Outlet, PVC White

with Buna-N O-ring Seal & SS Hardware

2"- 4" 235, 6" 200, 8"-12" 150 psi @ 73°F (23°C)

469S-247SR	2X1/2	3/4	1	10	046	75.19
469S-248SR	2X3/4	7/8	1	10	046	75.19
469S-249SR	2X1	1-1/8	1	10	046	75.19
469S-250SR	2X1-1/4	1-1/2	1	10	046	75.19
469S-251SR	2X1-1/2	1-1/2	1	10	046	75.19
469S-291SR	2-1/2X1-1/2	1-3/4	1	10	046	100.35
469S-333SR <sup>1</sup>	3X1/2	7/8	1	10	046	100.35
469S-334SR	3X3/4	7/8	1	10	046	100.35
469S-335SR	3X1	1-1/8	1	10	046	100.35
469S-336SR <sup>1</sup>	3X1-1/4	2-1/4	1	10	046	100.35
469S-337SR <sup>1</sup>	3X1-1/2	2-1/4	1	10	046	100.35
469S-338SR	3X2	2-1/4	1	10	046	100.35
469S-415SR <sup>1</sup>	4X1/2	1-1/8	1	10	046	127.51
469S-416SR <sup>1</sup>	4X3/4	1-1/8	1	10	046	127.51
469S-417SR	4X1	1-1/8	1	8	046	127.51
469S-418SR <sup>1</sup>	4X1-1/4	1-3/4	1	8	046	127.51
469S-419SR	4X1-1/2	1-3/4	1	8	046	127.51
469S-420SR	4X2	2-1/4	1	8	046	127.51
469S-421SR <sup>1</sup>	4X2-1/2	3	1	4	046	134.51
469S-422SR	4X3	3	4	0	046	147.27
469S-523SR <sup>1</sup>	6X1/2	1-1/8	1	4	046	209.47
469S-524SR <sup>1</sup>	6X3/4	1-1/8	1	4	046	209.47
469S-525SR	6X1	1-1/8	1	4	046	209.47
469S-526SR <sup>1</sup>	6X1-1/4	2-1/4	1	4	046	209.47
469S-527SR <sup>1</sup>	6X1-1/2	2-1/4	1	4	046	209.47

**Schedule 40 Fittings Product**  
**Clamp-On Saddles**

**Clamp-On Saddles**

Part Number	Size	Hole Saw Dia	Std Pk	Mstr Ctn	Prod Code	MSRP
<b>Clamp-On Saddle x SR Thread Double Outlet, PVC White</b>						
(continued)						
<b>with Buna-N O-ring Seal &amp; SS Hardware</b>						
469S-528SR	6X2	2-1/4	1	4	046	209.47
469S-529SR <sup>1</sup>	6X2-1/2	3	1	4	046	219.27
469S-530SR	6X3	3	1	4	046	231.95
469S-532SR	6X4	4	1	4	046	242.19
469S-573SR <sup>1</sup>	8X1/2	4	1	0	046	297.04
469S-574SR <sup>1</sup>	8X3/4	4	1	0	046	297.04
469S-575SR <sup>1</sup>	8X1	4	1	0	046	297.04
469S-576SR <sup>1</sup>	8X1-1/4	4	1	0	046	297.04
469S-577SR <sup>1</sup>	8X1-1/2	4	1	0	046	297.04
469S-578SR <sup>1</sup>	8X2	4	1	0	046	297.04
469S-579SR <sup>1</sup>	8X2-1/2	4	1	0	046	326.73
469S-580SR <sup>1</sup>	8X3	4	1	0	046	342.97
469S-582SR	8X4	4	1	0	046	363.23
469S-585SR	8X6	6	1	0	046	403.37
469S-624SR	10X4	4	1	0	046	480.04
469S-626SR	10X6	6	1	0	046	552.04
469S-664SR	12X4	4	1	0	046	601.67
469S-666SR	12X6	6	1	0	046	697.78

<sup>1</sup> Outlet-sized with Bushing



**Clamp-On Saddle x SR Thread Double Outlet, PVC White**

**with EPDM O-ring Seal & Zinc-Plated Hardware**

2"- 4" 235, 6" 200, 8"-12" 150 psi @ 73°F (23°C)

469E-247SR	2X1/2	3/4	1	10	046	52.39
469E-248SR	2X3/4	7/8	1	10	046	52.39
469E-249SR	2X1	1-1/8	1	10	046	52.39
469E-250SR	2X1-1/4	1-1/2	1	10	046	52.39
469E-251SR	2X1-1/2	1-1/2	1	10	046	52.39
469E-291SR	2-1/2X1-1/2	1-3/4	1	10	046	71.04
469E-333SR <sup>1</sup>	3X1/2	7/8	1	10	046	71.04
469E-334SR	3X3/4	7/8	1	10	046	71.04
469E-335SR	3X1	1-1/8	1	10	046	71.04
469E-336SR <sup>1</sup>	3X1-1/4	2-1/4	1	10	046	71.04
469E-337SR <sup>1</sup>	3X1-1/2	2-1/4	1	10	046	71.04
469E-338SR	3X2	2-1/4	1	16	046	71.04
469E-415SR <sup>1</sup>	4X1/2	1-1/8	1	10	046	110.74
469E-416SR <sup>1</sup>	4X3/4	1-1/8	1	10	046	110.74
469E-417SR	4X1	1-1/8	1	8	046	110.74
469E-418SR <sup>1</sup>	4X1-1/4	1-3/4	1	8	046	110.74
469E-419SR	4X1-1/2	1-3/4	1	8	046	110.74
469E-420SR	4X2	2-1/4	1	8	046	110.74
469E-421SR <sup>1</sup>	4X2-1/2	3	1	4	046	112.93
469E-422SR	4X3	3	4	0	046	144.22
469E-523SR <sup>1</sup>	6X1/2	1-1/8	1	4	046	169.78
469E-524SR <sup>1</sup>	6X3/4	1-1/8	1	4	046	169.78

Part Number	Size	Hole Saw Dia	Std Pk	Mstr Ctn	Prod Code	MSRP
<b>Clamp-On Saddle x SR Thread Double Outlet, PVC White</b>						
(continued)						
<b>with EPDM O-ring Seal &amp; Zinc-Plated Hardware</b>						
469E-525SR	6X1	1-1/8	1	4	046	169.78
469E-526SR <sup>1</sup>	6X1-1/4	2-1/4	1	4	046	169.78
469E-527SR <sup>1</sup>	6X1-1/2	2-1/4	1	4	046	169.78
469E-528SR	6X2	2-1/4	1	4	046	169.78
469E-529SR <sup>1</sup>	6X2-1/2	3	1	4	046	190.04
469E-530SR	6X3	3	1	4	046	205.53
469E-532SR	6X4	4	1	4	046	218.56
469E-573SR <sup>1</sup>	8X1/2	4	1	0	046	246.03
469E-574SR <sup>1</sup>	8X3/4	4	1	0	046	246.03
469E-575SR <sup>1</sup>	8X1	4	1	0	046	246.03
469E-576SR <sup>1</sup>	8X1-1/4	4	1	0	046	246.03
469E-577SR <sup>1</sup>	8X1-1/2	4	1	0	046	246.03
469E-578SR	8X2	4	1	0	046	246.03
469E-579SR <sup>1</sup>	8X2-1/2	4	1	0	046	270.76
469E-580SR <sup>1</sup>	8X3	4	1	0	046	284.28
469E-582SR	8X4	4	1	0	046	301.39
469E-585SR	8X6	6	1	0	046	334.51
469E-624SR	10X4	4	1	0	046	398.08
469E-626SR	10X6	6	1	0	046	457.65
469E-666SR	12X6	6	1	0	046	578.89

<sup>1</sup> Outlet-sized with Bushing



**Clamp-On Saddle x SR Thread Double Outlet, PVC White**

**with EPDM O-ring Seal & SS Hardware**

2"- 4" 235, 6" 200, 8"-12" 150 psi @ 73°F (23°C)

469SE-247SR	2X1/2	3/4	1	10	046	80.01
469SE-248SR	2X3/4	7/8	1	10	046	80.01
469SE-249SR	2X1	1-1/8	1	10	046	80.01
469SE-250SR	2X1-1/4	1-1/2	1	10	046	80.01
469SE-251SR	2X1-1/2	1-1/2	1	10	046	80.01
469SE-291SR	2-1/2X1-1/2	1-3/4	1	10	046	106.57
469SE-333SR <sup>1</sup>	3X1/2	7/8	1	10	046	106.57
469SE-334SR	3X3/4	7/8	1	10	046	106.57
469SE-335SR	3X1	1-1/8	1	10	046	106.57
469SE-336SR <sup>1</sup>	3X1-1/4	2-1/4	1	10	046	106.57
469SE-337SR <sup>1</sup>	3X1-1/2	2-1/4	1	10	046	106.57
469SE-338SR	3X2	2-1/4	1	10	046	106.57
469SE-415SR <sup>1</sup>	4X1/2	1-1/8	1	10	046	137.47
469SE-416SR <sup>1</sup>	4X3/4	1-1/8	1	10	046	137.47
469SE-417SR	4X1	1-1/8	1	8	046	137.47
469SE-418SR <sup>1</sup>	4X1-1/4	1-3/4	1	8	046	137.47
469SE-419SR	4X1-1/2	1-3/4	1	8	046	137.47
469SE-420SR	4X2	2-1/4	1	8	046	137.47
469SE-421SR <sup>1</sup>	4X2-1/2	3	1	4	046	142.61
469SE-422SR	4X3	3	4	0	046	156.06
469SE-523SR <sup>1</sup>	6X1/2	1-1/8	1	4	046	214.83
469SE-524SR <sup>1</sup>	6X3/4	1-1/8	1	4	046	214.83



**Schedule 40 Fittings Product**  
**Clamp-On Saddles & Wedge Clamp Saddles**

**Clamp-On Saddles**

Part Number	Size	Hole Saw Dia	Std Pk	Mstr Ctn	Prod Code	MSRP
<b>Clamp-On Saddle x SR Thread Double Outlet, PVC White</b> (continued)						
<b>with EPDM O-ring Seal &amp; SS Hardware</b>						
469SE-525SR	6X1	1-1/8	1	4	046	214.83
469SE-526SR <sup>1</sup>	6X1-1/4	2-1/4	1	4	046	214.83
469SE-527SR <sup>1</sup>	6X1-1/2	2-1/4	1	4	046	214.83
469SE-528SR	6X2	2-1/4	1	4	046	214.83
469SE-529SR <sup>1</sup>	6X2-1/2	3	1	4	046	229.81
469SE-530SR	6X3	3	1	4	046	242.65
469SE-532SR	6X4	4	1	4	046	257.04
469SE-573SR <sup>1</sup>	8X1/2	4	1	0	046	303.92
469SE-574SR <sup>1</sup>	8X3/4	4	1	0	046	303.92
469SE-575SR <sup>1</sup>	8X1	4	1	0	046	303.92
469SE-576SR <sup>1</sup>	8X1-1/4	4	1	0	046	303.92
469SE-577SR <sup>1</sup>	8X1-1/2	4	1	0	046	303.92
469SE-578SR <sup>1</sup>	8X2	4	1	0	046	303.92
469SE-579SR <sup>1</sup>	8X2-1/2	4	1	0	046	334.33
469SE-580SR <sup>1</sup>	8X3	4	1	0	046	351.02
469SE-582SR	8X4	4	1	0	046	365.78
469SE-585SR	8X6	6	1	0	046	412.87
469SE-624SR	10X4	4	1	0	046	491.24
469SE-626SR	10X6	6	1	0	046	564.92
469SE-664SR	12X4	4	1	0	046	614.57
469SE-666SR	12X6	6	1	0	046	713.84
<sup>1</sup> Outlet-sized with Bushing						

**Wedge Clamp Saddles**

Wedge Saddle x Socket, PVC White

With EPDM O-ring Seal



\* = Available Soon

466W-210 <sup>1</sup>	1-1/2X3/4	7/8	1	10	046	42.64
466W-211 <sup>1</sup>	1-1/2X1	7/8	1	10	046	42.64
466W-248 <sup>1</sup>	2X3/4	1-1/4	1	10	046	42.64
466W-250 <sup>1</sup>	2X1-1/4	1-1/4	1	10	046	42.64
466W-249 <sup>1</sup>	2X1	1-1/4	1	10	046	42.64
466W-251	2X1-1/2	1-1/4	1	10	046	42.64
466W-334 <sup>1</sup>	3X3/4	2	1	10	046	57.83
466W-335 <sup>1</sup>	3X1	2	1	10	046	57.83
466W-336 <sup>1</sup>	3X1-1/4	2	1	10	046	57.83
466W-337 <sup>1</sup>	3X1-1/2	2	1	10	046	57.83
466W-338	3X2	2	1	10	046	57.83
466W-416 <sup>1</sup>	4X3/4	2	1	10	046	74.09
466W-417 <sup>1</sup>	4X1	2	1	8	046	74.09
466W-418 <sup>1</sup>	4X1-1/4	2	1	8	046	74.09
466W-419 <sup>1</sup>	4X1-1/2	2	1	8	046	74.09
466W-420	4X2	2	1	8	046	74.09

Part Number	Size	Hole Saw Dia	Std Pk	Mstr Ctn	Prod Code	MSRP
-------------	------	--------------	--------	----------	-----------	------

Wedge Saddle x Socket, PVC White (continued)

With EPDM O-ring Seal

466W-524	6X3/4	3/4	1	0	046	119.60
466W-525	6X1	1	1	0	046	119.60
466W-526	6X1-1/4	1-1/4	1	0	046	119.60
466W-527	6X1-1/2	1-1/2	1	0	046	119.60
466W-528	6X2	2	1	0	046	119.60
466W-574	8X3/4	3/4	1	0	046	145.15
466W-576	8X1-1/4	1-1/4	1	0	046	145.15
466W-575	8X1	1	1	0	046	145.15
466W-577	8X1-1/2	1-1/2	1	0	046	145.15
466W-578	8X2	2	1	0	046	145.15

<sup>1</sup> Outlet-sized with Bushing

Wedge Saddle x SR Thread, PVC White

With EPDM O-ring Seal



\* = Available Soon

467W-210SR <sup>1</sup>	1-1/2X3/4	7/8	1	10	046	51.51
467W-211SR <sup>1</sup>	1-1/2X1	7/8	1	10	046	51.51
467W-248SR <sup>1</sup>	2X3/4	1-1/4	1	10	046	51.51
467W-249SR <sup>1</sup>	2X1	1-1/4	1	10	046	51.51
467W-250SR <sup>1</sup>	2X1-1/4	1-1/4	1	10	046	51.51
467W-251SR	2X1-1/2	1-1/4	1	10	046	51.51
467W-334SR <sup>1</sup>	3X3/4	2	1	10	046	69.84
467W-335SR <sup>1</sup>	3X1	2	1	10	046	69.84
467W-336SR <sup>1</sup>	3X1-1/4	2	1	10	046	69.84
467W-337SR <sup>1</sup>	3X1-1/2	2	1	10	046	69.84
467W-338SR	3X2	2	1	10	046	69.84
467W-416SR <sup>1</sup>	4X3/4	2	1	8	046	89.49
467W-417SR <sup>1</sup>	4X1	2	1	8	046	89.49
467W-418SR <sup>1</sup>	4X1-1/4	2	1	8	046	89.49
467W-419SR <sup>1</sup>	4X1-1/2	2	1	8	046	89.49
467W-420SR	4X2	2	1	8	046	89.49
467W-524SR	6X3/4	3/4	1	0	046	144.45
467W-525SR	6X1	1	1	0	046	144.45
467W-526SR	6X1-1/4	1-1/4	1	0	046	144.45
467W-527SR	6X1-1/2	1-1/2	1	0	046	144.45
467W-528SR	6X2	2	1	0	046	144.45
467W-574SR	8X3/4	3/4	1	0	046	175.31
467W-575SR	8X1	1	1	0	046	175.31
467W-576SR	8X1-1/4	1-1/4	1	0	046	175.31
467W-577SR	8X1-1/2	1-1/2	1	0	046	175.31
467W-578SR	8X2	2	1	0	046	175.31

<sup>1</sup> Outlet-sized with Bushing

## Hot-Tap Saddles

### Hot-Tap Saddles

Part Number	Size	Std Pk	Mstr Ctn	Prod Code	MSRP
-------------	------	--------	----------	-----------	------

Hot-Tap Saddle, PVC White

**EPDM Saddle x Soc (Spigot) Zinc Plated Bolts**



2" - 4" 235, 6" 200, 8" 150 psi @ 73°F (23°C)

HT2-248W	<b>2X3/4 (1)</b>	1	5	049	62.85
HT2-251W	<b>2X1-1/2 (2)</b>	1	5	049	129.85
HT2-288W	<b>2-1/2X3/4 (1)</b>	1	5	049	67.17
HT2-291W	<b>2-1/2x1-1/2 (2)</b>	1	5	049	134.16
HT2-334W	<b>3X3/4 (1)</b>	1	5	049	76.92
HT2-337W	<b>3X1-1/2 (2)</b>	1	5	049	147.87
HT2-416W	<b>4X3/4 (1)</b>	1	0	049	88.84
HT2-419W	<b>4X1-1/2 (2)</b>	1	0	049	156.37
HT2-524W	<b>6X3/4 (1)</b>	1	0	049	99.86
HT2-527W	<b>6X1-1/2 (2)</b>	1	0	049	166.48
HT2-574W	<b>8X3/4 (1)</b>	1	0	049	110.52
HT2-577W	<b>8X1-1/2 (2)</b>	1	0	049	177.51

**Not intended to convey or dispense water for human consumption through drinking or cooking**

Hot-Tap Saddle, PVC White

**EPDM Saddle x Soc (Spigot) SS316 Bolts**



2" - 4" 235, 6" 200, 8" 150 psi @ 73°F (23°C)

HT2S-248W	<b>2X3/4 (1)</b>	1	5	049	97.87
HT2S-251W	<b>2X1-1/2 (2)</b>	1	5	049	202.05
HT2S-288W	<b>2-1/2X3/4 (1)</b>	1	5	049	104.55
HT2S-291W	<b>2-1/2x1-1/2 (2)</b>	1	5	049	208.73
HT2S-334W	<b>3X3/4 (1)</b>	1	5	049	119.74
HT2S-337W	<b>3X1-1/2 (2)</b>	1	5	049	230.24
HT2S-416W	<b>4X3/4 (1)</b>	1	5	049	138.32
HT2S-419W	<b>4X1-1/2 (2)</b>	1	0	049	243.39
HT2S-524W	<b>6X3/4 (1)</b>	1	5	049	155.31
HT2S-527W	<b>6X1-1/2 (2)</b>	1	0	049	258.92
HT2S-574W	<b>8X3/4 (1)</b>	1	0	049	171.17
HT2S-577W	<b>8X1-1/2 (2)</b>	1	0	049	275.19

**Not intended to convey or dispense water for human consumption through drinking or cooking**