

CPVC Gray Saddles & Hot-Tap Saddles

PRODUCT

Schedule 80 CPVC Product
Glue-On Saddles

Glue-On Saddles

Part Number	Size	Std Pk	Mstr Ctn	Prod Code	MSRP
-------------	------	--------	----------	-----------	------

Saddle



IPS O.D. x Socket Schedule 80

Non Pressure Rated

3963-528C	6X2	1	5	099	118.51
3963-530C	6X3	1	5	099	134.26
3963-532C	6X4	1	8	099	164.29
3963-578C	8X2	1	5	099	179.84
3963-580C	8X3	1	8	099	199.64
3963-582C	8X4	1	5	099	256.64
3963-585C	8X6	1	8	099	293.77
3963-621C	10X2	1	5	099	201.15
3963-623C	10X3	1	8	099	221.52
3963-624C	10X4	1	5	099	272.05
3963-626C	10X6	1	5	099	333.42
3963-628C	10X8	1	5	099	368.79
3963-661C	12X2	1	10	099	221.41
3963-663C	12X3	1	8	099	258.57
3963-664C	12X4	1	8	099	309.56
3963-666C	12X6	1	5	099	358.92
3963-668C	12X8	1	4	099	452.52
3963-670C	12X10	1	0	099	707.74
3963-693C	14X3	1	8	099	278.25
3963-694C	14X4	1	5	099	360.29
3963-696C	14X6	1	10	099	421.07
3963-698C	14X8	1	4	099	501.47
3963-700C	14X10	1	3	099	881.23
3963-702C	14X12	1	4	099	1033.41
3963-751C	16X2	1	10	099	267.56
3963-753C	16X3	1	8	099	335.11
3963-754C	16X4	1	10	099	420.58
3963-756C	16X6	1	3	099	569.96
3963-758C	16X8	1	3	099	715.35
3963-760C	16X10	1	0	099	983.31
3963-762C	16X12	1	0	099	1378.56
3963-764C	16X14	1	0	099	1585.21
3963-781C	18X2	1	10	409	325.88
3963-783C	18X3	1	4	099	366.60
3963-784C	18X4	1	5	099	534.24
3963-786C	18X6	1	5	099	732.34
3963-788C	18X8	1	5	099	826.53
3963-790C	18X10	1	0	099	1078.12
3963-792C	18X12	1	0	099	1548.72
3963-794C	18X14	1	0	099	1693.24
3963-796C	18X16	1	0	099	1955.00
3963-811C	20X2	1	0	099	343.18
3963-813C	20X3	1	4	099	396.87
3963-814C	20X4	1	4	099	596.07
3963-816C	20X6	1	0	099	791.57
3963-818C	20X8	1	0	099	975.58

Part Number	Size	Std Pk	Mstr Ctn	Prod Code	MSRP
-------------	------	--------	----------	-----------	------

Saddle (continued)

IPS O.D. x Socket Schedule 80

3963-820C	20X10	1	5	099	1192.71
3963-822C	20X12	1	0	099	1610.56
3963-824C	20X14	1	0	099	1879.39
3963-826C	20X16	1	0	099	2094.77
3963-828C	20X18	1	0	099	2284.25
3963-901C	24X2	1	5	099	376.16
3963-903C	24X3	1	5	099	627.58
3963-904C	24X4	1	5	099	728.69
3963-906C	24X6	1	5	099	1036.71
3963-908C	24X8	1	5	099	1218.71
3963-910C	24X10	1	5	099	1508.12
3963-912C	24X12	1	0	099	1709.41
3963-914C	24X14	1	0	099	1996.55
3963-916C	24X16	1	0	099	2209.54
3963-918C	24X18	1	0	099	2447.85
3963-920C	24X20	1	0	099	2915.03

Stub Saddle



IPS O.D. x Socket Schedule 80

Non Pressure Rated

3965-528C	6X2	1	8	099	149.19
3965-530C	6X3	1	3	099	160.26
3965-532C	6X4	1	5	099	199.18
3965-578C	8X2	1	5	099	186.46
3965-580C	8X3	1	4	099	122.36
3965-582C	8X4	1	5	099	277.28
3965-585C	8X6	1	4	099	348.86
3965-621C	10X2	1	6	099	213.18
3965-623C	10X3	1	5	099	239.39
3965-624C	10X4	1	4	099	291.03
3965-626C	10X6	1	4	099	224.86
3965-628C	10X8	1	2	099	374.69
3965-661C	12X2	1	5	099	241.47
3965-663C	12X3	1	2	099	285.86
3965-664C	12X4	1	2	099	332.96
3965-666C	12X6	1	2	099	388.23
3965-668C	12X8	1	2	099	498.29
3965-670C	12X10	1	2	099	881.04
3965-691C	14X2	1	6	099	259.95
3965-693C	14X3	1	0	099	318.15
3965-694C	14X4	1	5	099	377.60
3965-696C	14X6	1	2	099	486.03
3965-700C	14X10	1	0	099	981.67
3965-702C	14X12	1	0	099	1206.06
3965-751C	16X2	1	5	099	300.75
3965-753C	16X3	1	4	099	342.75
3965-754C	16X4	1	3	099	451.51
3965-756C	16X6	1	2	099	605.19
3965-758C	16X8	1	0	099	763.25
3965-760C	16X10	1	0	099	1025.85

Suitable for Oil-Free air handling to 25 psi, not for distribution of compressed air or gas

Schedule 80 CPVC Product
Glue-On Saddles & Clamp-On Saddles

Glue-On Saddles

Part Number	Size	Std Pk	Mstr Ctn	Prod Code	MSRP
Stub Saddle (continued)					
IPS O.D. x Socket Schedule 80					
3965-762C	16X12	1	0	099	1431.38
3965-764C	16X14	1	0	099	1945.36
3965-781C	18X2	1	2	099	344.28
3965-783C	18X3	1	0	099	382.93
3965-784C	18X4	1	2	099	565.76
3965-786C	18X6	1	2	099	767.75
3965-788C	18X8	1	0	099	845.61
3965-790C	18X10	1	0	099	1231.19
3965-792C	18X12	1	0	099	2398.47
3965-794C	18X14	1	0	099	3079.83
3965-796C	18X16	1	0	099	3945.43
3965-811C	20X2	1	0	099	360.94
3965-813C	20X3	1	2	099	408.87
3965-814C	20X4	1	0	099	618.65
3965-816C	20X6	1	0	099	821.60
3965-818C	20X8	1	0	099	1021.04
3965-820C	20X10	1	0	099	1397.23
3965-822C	20X12	1	0	099	2569.21
3965-824C	20X14	1	0	099	3332.26
3965-826C	20X16	1	0	099	4219.40
3965-828C	20X18	1	0	099	5144.00
3965-901C	24X2	1	5	099	397.85
3965-903C	24X3	1	2	099	666.62
3965-904C	24X4	1	5	099	780.98
3965-906C	24X6	1	3	099	1102.18
3965-908C	24X8	1	0	099	1291.09
3965-910C	24X10	1	0	099	1618.04
3965-912C	24X12	1	0	099	2774.52
3965-914C	24X14	1	0	099	3507.49
3965-916C	24X16	1	0	099	4302.27
3965-918C	24X18	1	0	099	5246.39
3965-920C	24X20	1	0	099	6763.19

Clamp-On Saddles

Clamp-On Saddle x Socket Single Outlet,
CPVC Gray

with FKM O-ring Seal & Zinc-Plated
Hardware



2"- 4" 235, 6" 200, 8"-12" 150 psi @ 73°F (23°C)

866V-247C	2X1/2	3/4	1	10	096	69.60
866V-248C	2X3/4	7/8	1	10	096	69.60
866V-249C	2X1	1-1/8	1	10	096	69.60
866V-250C	2X1-1/4	1-1/2	1	10	096	69.60
866V-251C	2X1-1/2	1-1/2	1	10	096	69.60
866V-291C	2-1/2X1-1/2	1-3/4	1	10	096	96.72
866V-333C ¹	3X1/2	7/8	1	10	096	96.72
866V-334C	3X3/4	7/8	1	10	096	96.72
866V-335C	3X1	1-1/8	1	10	096	96.72

Part Number	Size	Hole Saw Dia	Std Pk	Mstr Ctn	Prod Code	MSRP
-------------	------	--------------	--------	----------	-----------	------

Clamp-On Saddle x Socket Single Outlet, CPVC Gray (continued)
with FKM O-ring Seal & Zinc-Plated Hardware

866V-336C ¹	3X1-1/4	2-1/4	1	10	096	96.72
866V-337C ¹	3X1-1/2	2-1/4	1	10	096	96.72
866V-338C	3X2	2-1/4	1	10	096	96.72
866V-415C ¹	4X1/2	1-1/8	1	10	096	116.24
866V-416C ¹	4X3/4	1-1/8	1	10	096	116.24
866V-417C	4X1	1-1/8	1	8	096	116.24
866V-418C ¹	4X1-1/4	1-3/4	1	8	096	116.24
866V-419C	4X1-1/2	1-3/4	1	8	096	116.24
866V-420C	4X2	2-1/4	1	8	096	116.24
866V-421C ¹	4X2-1/2	3	1	4	096	124.80
866V-422C	4X3	3	1	4	096	136.06
866V-523C ¹	6X1/2	1-1/8	1	4	096	193.77
866V-524C ¹	6X3/4	1-1/8	1	4	096	193.77
866V-525C	6X1	1-1/8	1	4	096	193.77
866V-526C ¹	6X1-1/4	2-1/4	1	4	096	193.77
866V-527C ¹	6X1-1/2	2-1/4	1	4	096	193.77
866V-528C	6X2	2-1/4	1	4	096	193.77
866V-529C ¹	6X2-1/2	3	1	4	096	209.71
866V-530C	6X3	3	1	4	096	223.23
866V-532C	6X4	4	1	4	096	237.86
866V-573C ¹	8X1/2	4	1	0	096	413.29
866V-574C ¹	8X3/4	4	1	0	096	413.29
866V-575C ¹	8X1	4	1	0	096	413.29
866V-576C ¹	8X1-1/4	4	1	0	096	413.29
866V-577C ¹	8X1-1/2	4	1	0	096	413.29
866V-578C	8X2	4	1	0	096	413.29
866V-579C ¹	8X2-1/2	4	1	0	096	454.69
866V-580C ¹	8X3	4	1	0	096	477.08
866V-582C	8X4	4	1	0	096	519.53
866V-585C	8X6	6	1	0	096	714.29
866V-624C	10X4	4	1	0	096	668.21
866V-626C	10X6	6	1	0	096	768.31
866V-664C	12X4	4	1	0	096	837.60
866V-666C	12X6	6	1	0	096	887.83

¹ Outlet-sized with Bushing

Clamp-On Saddle x Socket Single Outlet,
CPVC Gray

with FKM O-ring Seal & SS Hardware



2"- 4" 235, 6" 200, 8"-12" 150 psi @ 73°F (23°C)

866SV-247C	2X1/2	3/4	1	10	096	106.23
866SV-248C	2X3/4	7/8	1	10	096	106.23
866SV-249C	2X1	1-1/8	1	10	096	106.23
866SV-250C	2X1-1/4	1-1/2	1	10	096	106.23
866SV-251C	2X1-1/2	1-1/2	1	10	096	106.23
866SV-291C	2-1/2X1-1/2	1-3/4	1	10	096	142.31
866SV-333C ¹	3X1/2	7/8	1	10	096	142.31
866SV-334C	3X3/4	7/8	1	10	096	142.31
866SV-335C	3X1	1-1/8	1	10	096	142.31
866SV-336C ¹	3X1-1/4	2-1/4	1	10	096	142.31
866SV-337C ¹	3X1-1/2	2-1/4	1	10	096	142.31

Schedule 80 CPVC Product
Clamp-On Saddles

Clamp-On Saddles

Part Number	Size	Hole Saw Dia	Std Pk	Mstr Ctn	Prod Code	MSRP
Clamp-On Saddle x Socket Single Outlet, CPVC Gray (continued) with FKM O-ring Seal & SS Hardware						
866SV-338C	3X2	2-1/4	1	10	096	142.31
866SV-415C ¹	4X1/2	1-1/8	1	10	096	183.81
866SV-416C ¹	4X3/4	1-1/8	1	10	096	183.81
866SV-417C	4X1	1-1/8	1	8	096	183.81
866SV-418C ¹	4X1-1/4	1-3/4	1	8	096	183.81
866SV-419C	4X1-1/2	1-3/4	1	8	096	183.81
866SV-420C	4X2	2-1/4	1	8	096	183.81
866SV-421C ¹	4X2-1/2	3	1	4	096	194.55
866SV-422C	4X3	3	1	4	096	204.45
866SV-523C ¹	6X1/2	1-1/8	1	4	096	292.67
866SV-524C ¹	6X3/4	1-1/8	1	4	096	292.67
866SV-525C	6X1	1-1/8	1	4	096	292.67
866SV-526C ¹	6X1-1/4	2-1/4	1	4	096	292.67
866SV-527C ¹	6X1-1/2	2-1/4	1	4	096	292.67
866SV-528C	6X2	2-1/4	1	4	096	292.67
866SV-529C ¹	6X2-1/2	3	1	4	096	304.27
866SV-530C	6X3	3	1	4	096	314.85
866SV-532C	6X4	4	1	4	096	334.65
866SV-573C ¹	8X1/2	4	1	0	096	540.01
866SV-574C ¹	8X3/4	4	1	0	096	540.01
866SV-575C ¹	8 X 1	4	1	0	096	540.01
866SV-576C ¹	8X1-1/4	4	1	0	096	540.01
866SV-577C ¹	8X1-1/2	4	1	0	096	540.01
866SV-578C	8 X 2	4	1	0	096	540.01
866SV-579C ¹	8X2-1/2	4	1	0	096	571.58
866SV-580C ¹	8X3	4	1	0	096	623.84
866SV-582C	8X4	4	1	0	096	661.25
866SV-585C	8X6	6	1	0	096	733.89
866SV-624C	10X4	4	1	0	096	873.27
866SV-626C	10X6	6	1	0	096	1004.40
866SV-664C	12X4	4	1	0	096	1094.60
866SV-666C	12X6	6	1	0	096	1269.88

¹ Outlet-sized with Bushing



Clamp-On Saddle x Socket Single Outlet, CPVC Gray

with EPDM O-ring Seal & Zinc-Plated Hardware

2"- 4" 235, 6" 200, 8"-12" 150 psi @ 73°F (23°C)

866-247C	2X1/2	3/4	1	10	096	66.14
866-248C	2X3/4	7/8	1	10	096	66.14
866-249C	2X1	1-1/8	1	10	096	66.14
866-250C	2X1-1/4	1-1/2	1	10	096	66.14
866-251C	2X1-1/2	1-1/2	1	10	096	66.14
866-291C	2-1/2X1-1/2	1-3/4	1	10	096	88.61
866-333C ¹	3X1/2	7/8	1	10	096	88.61
866-334C	3X3/4	7/8	1	10	096	88.61
866-335C	3X1	1-1/8	1	10	096	88.61
866-336C ¹	3X1-1/4	2-1/4	1	10	096	88.61

Part Number	Size	Hole Saw Dia	Std Pk	Mstr Ctn	Prod Code	MSRP
-------------	------	--------------	--------	----------	-----------	------

Clamp-On Saddle x Socket Single Outlet, CPVC Gray (continued)
with EPDM O-ring Seal & Zinc-Plated Hardware

866-337C ¹	3X1-1/2	2-1/4	1	10	096	88.61
866-338C	3X2	2-1/4	1	10	096	88.61
866-415C ¹	4X1/2	1-1/8	1	10	096	107.74
866-416C ¹	4X3/4	1-1/8	1	10	096	107.74
866-417C	4X1	1-1/8	1	8	096	107.74
866-418C ¹	4X1-1/4	1-3/4	1	8	096	107.74
866-419C	4X1-1/2	1-3/4	1	8	096	107.74
866-420C	4X2	2-1/4	1	8	096	107.74
866-421C ¹	4X2-1/2	3	1	4	096	118.33
866-422C	4X3	3	1	4	096	131.88
866-523C ¹	6X1/2	1-1/8	1	4	096	179.79
866-524C ¹	6X3/4	1-1/8	1	4	096	179.79
866-525C	6X1	1-1/8	1	4	096	179.79
866-526C ¹	6X1-1/4	2-1/4	1	4	096	179.79
866-527C ¹	6X1-1/2	2-1/4	1	4	096	179.79
866-528C	6X2	2-1/4	1	4	096	179.79
866-529C ¹	6X2-1/2	3	1	4	096	195.44
866-530C	6X3	3	1	4	096	209.65
866-532C	6X4	4	1	4	096	224.04
866-573C ¹	8X1/2	4	1	0	096	395.35
866-574C ¹	8X3/4	4	1	0	096	395.35
866-575C ¹	8X1	4	1	0	096	395.35
866-576C ¹	8X1-1/4	4	1	0	096	395.35
866-577C ¹	8X1-1/2	4	1	0	096	395.35
866-578C	8X2	4	1	0	096	395.35
866-579C ¹	8X2-1/2	4	1	0	096	434.85
866-580C ¹	8X3	4	1	0	096	456.71
866-582C	8X4	4	1	0	096	484.05
866-585C	8X6	6	1	0	096	537.26
866-621C ¹	10X2	4	1	0	096	639.27
866-624C	10X4	4	1	0	096	639.27
866-626C	10X6	4	1	0	096	735.25
866-664C	12X4	4	1	0	096	801.48
866-666C	12X6	6	1	0	096	929.65

¹ Outlet-sized with Bushing



Clamp-On Saddle x Socket Single Outlet, CPVC Gray

with EPDM O-ring Seal & SS Hardware

2"- 4" 235, 6" 200, 8"-12" 150 psi @ 73°F (23°C)

866S-247C	2X1/2	3/4	1	10	096	102.97
866S-248C	2X3/4	7/8	1	10	096	102.97
866S-249C	2X1	1-1/8	1	10	096	102.97
866S-250C	2X1-1/4	1-1/2	1	10	096	102.97
866S-251C	2X1-1/2	1-1/2	1	10	096	102.97
866S-291C	2-1/2X1-1/2	1-3/4	1	10	096	137.26
866S-333C ¹	3X1/2	7/8	1	10	096	137.26
866S-334C	3X3/4	7/8	1	10	096	137.26
866S-335C	3X1	1-1/8	1	10	096	137.26
866S-336C ¹	3X1-1/4	2-1/4	1	10	096	137.26
866S-337C ¹	3X1-1/2	2-1/4	1	10	096	137.26

Suitable for Oil-Free air handling to 25 psi, not for distribution of compressed air or gas

**Schedule 80 CPVC Product
Clamp-On Saddles**

Clamp-On Saddles

Part Number	Size	Hole Saw Dia	Std Pk	Mstr Ctn	Prod Code	MSRP
Clamp-On Saddle x Socket Single Outlet, CPVC Gray (continued) with EPDM O-ring Seal & SS Hardware						
866S-338C	3X2	2-1/4	1	10	096	137.26
866S-415C ¹	4X1/2	1-1/8	1	10	096	175.61
866S-416C ¹	4X3/4	1-1/8	1	10	096	175.61
866S-417C	4X1	1-1/8	1	8	096	175.61
866S-418C ¹	4X1-1/4	1-3/4	1	8	096	175.61
866S-419C	4X1-1/2	1-3/4	1	8	096	175.61
866S-420C	4X2	2-1/4	1	8	096	175.61
866S-421C ¹	4X2-1/2	3	1	4	096	183.02
866S-422C	4X3	3	1	4	096	192.42
866S-523C ¹	6X1/2	1-1/8	1	4	096	276.73
866S-524C ¹	6X3/4	1-1/8	1	4	096	276.73
866S-525C	6X1	1-1/8	1	4	096	276.73
866S-526C ¹	6X1-1/4	2-1/4	1	4	096	276.73
866S-527C ¹	6X1-1/2	2-1/4	1	4	096	276.73
866S-528C	6X2	2-1/4	1	4	096	276.73
866S-529C ¹	6X2-1/2	3	1	4	096	292.92
866S-530C	6X3	3	1	4	096	310.68
866S-532C	6X4	4	1	4	096	325.01
866S-573C ¹	8X1/2	4	1	0	096	519.73
866S-574C ¹	8X3/4	4	1	0	096	519.73
866S-575C ¹	8X1	4	1	0	096	519.73
866S-576C ¹	8X1-1/4	4	1	0	096	519.73
866S-577C ¹	8X1-1/2	4	1	0	096	519.73
866S-578C	8 X 2	4	1	0	096	519.73
866S-579C ¹	8X2-1/2	4	1	0	096	571.58
866S-580C ¹	8X3	4	1	0	096	600.20
866S-582C	8X4	4	1	0	096	636.22
866S-585C	8X6	6	1	0	096	706.01
866S-624C	10X4	4	1	0	096	840.09
866S-626C	10X6	6	1	0	096	966.19
866S-664C	12X4	4	1	0	096	1053.01
866S-666C	12X6	6	1	0	096	1221.54

¹ Outlet-sized with Bushing



Clamp-On Saddle x SR Thread Single Outlet, CPVC Gray

with FKM O-ring Seal & Zinc-Plated Hardware

2"- 4" 235, 6" 200, 8"-12" 150 psi @ 73°F (23°C)

867V-247CSR	2X1/2	3/4	1	10	096	79.71
867V-248CSR	2X3/4	7/8	1	10	096	79.71
867V-249CSR	2X1	1-1/8	1	10	096	79.71
867V-250CSR	2X1-1/4	1-1/2	1	10	096	79.71
867V-251CSR	2X1-1/2	1-1/2	1	10	096	79.71
867V-291CSR	2-1/2X1-1/2	1-3/4	1	10	096	111.20
867V-333CSR ¹	3X1/2	7/8	1	10	096	111.20
867V-334CSR	3X3/4	7/8	1	10	096	111.20
867V-335CSR	3X1	1-1/8	1	10	096	111.20
867V-336CSR ¹	3X1-1/4	2-1/4	1	10	096	111.20

Part Number	Size	Hole Saw Dia	Std Pk	Mstr Ctn	Prod Code	MSRP
Clamp-On Saddle x SR Thread Single Outlet, CPVC Gray (continued) with FKM O-ring Seal & Zinc-Plated Hardware						
867V-337CSR ¹	3X1-1/2	2-1/4	1	10	096	111.20
867V-338CSR	3X2	2-1/4	1	10	096	111.20
867V-415CSR ¹	4X1/2	1-1/8	1	10	096	138.67
867V-416CSR ¹	4X3/4	1-1/8	1	10	096	138.67
867V-417CSR	4X1	1-1/8	1	8	096	138.67
867V-418CSR ¹	4X1-1/4	1-3/4	1	8	096	138.67
867V-419CSR	4X1-1/2	1-3/4	1	8	096	138.67
867V-420CSR	4X2	2-1/4	1	8	096	138.67
867V-421CSR ¹	4X2-1/2	3	1	4	096	149.57
867V-422CSR	4X3	3	1	4	096	164.66
867V-523CSR ¹	6X1/2	1-1/8	1	4	096	231.71
867V-524CSR ¹	6X3/4	1-1/8	1	4	096	231.71
867V-525CSR	6X1	1-1/8	1	4	096	231.71
867V-526CSR ¹	6X1-1/4	2-1/4	1	4	096	231.71
867V-527CSR ¹	6X1-1/2	2-1/4	1	4	096	231.71
867V-528CSR	6X2	2-1/4	1	4	096	231.71
867V-529CSR ¹	6X2-1/2	3	1	4	096	248.12
867V-530CSR	6X3	3	1	4	096	257.04
867V-532CSR	6X4	4	1	4	096	275.32
867V-573CSR ¹	8X1/2	4	1	0	096	461.87
867V-574CSR ¹	8X3/4	4	1	0	096	461.87
867V-575CSR ¹	8X1	4	1	0	096	461.87
867V-576CSR ¹	8X1-1/4	4	1	0	096	461.87
867V-577CSR ¹	8X1-1/2	4	1	0	096	461.87
867V-578CSR ¹	8X2	4	1	0	096	461.87
867V-579CSR ¹	8X2-1/2	4	1	0	096	508.02
867V-580CSR ¹	8X3	4	1	0	096	533.47
867V-582CSR	8X4	4	1	0	096	567.59
867V-585CSR	8X6	6	1	0	096	585.24
867V-624CSR	10X4	4	1	0	096	675.28
867V-626CSR	10X6	6	1	0	096	776.54
867V-664CSR	12X4	4	1	0	096	844.76
867V-666CSR	12X6	6	1	0	096	982.03

¹ Outlet-sized with Bushing



Clamp-On Saddle x SR Thread Single Outlet, CPVC Gray

with FKM O-ring Seal & SS Hardware

2"- 4" 235, 6" 200, 8"-12" 150 psi @ 73°F (23°C)

867SV-245CSR ¹	2X1/4	1-1/8	1	10	096	138.58
867SV-247CSR	2X1/2	3/4	1	10	096	132.25
867SV-248CSR	2X3/4	7/8	1	10	096	132.25
867SV-249CSR	2X1	1-1/8	1	10	096	132.25
867SV-250CSR	2X1-1/4	1-1/2	1	10	096	132.25
867SV-251CSR	2X1-1/2	1-1/2	1	10	096	132.25
867SV-291CSR	2-1/2X1-1/2	1-3/4	1	10	096	177.67
867SV-331CSR ¹	3X1/4	1-1/8	1	10	096	187.82
867SV-333CSR ¹	3X1/2	7/8	1	10	096	177.67
867SV-334CSR	3X3/4	7/8	1	10	096	177.67
867SV-335CSR	3X1	1-1/8	1	10	096	177.67

**Schedule 80 CPVC Product
Clamp-On Saddles**

Clamp-On Saddles

Part Number	Size	Hole Saw Dia	Std Pk	Mstr Ctn	Prod Code	MSRP
-------------	------	--------------	--------	----------	-----------	------

Clamp-On Saddle x SR Thread Single Outlet, CPVC Gray

(continued)

with FKM O-ring Seal & SS Hardware

867SV-336CSR ¹	3X1-1/4	2-1/4	1	10	096	177.67
867SV-337CSR ¹	3X1-1/2	2-1/4	1	10	096	177.67
867SV-338CSR	3X2	2-1/4	1	10	096	177.67
867SV-413CSR ¹	4X1/4	1-1/8	1	8	096	224.46
867SV-415CSR ¹	4X1/2	1-1/8	1	10	096	224.46
867SV-416CSR ¹	4X3/4	1-1/8	1	10	096	224.46
867SV-417CSR	4X1	1-1/8	1	8	096	224.46
867SV-418CSR ¹	4X1-1/4	1-3/4	1	8	096	224.46
867SV-419CSR	4X1-1/2	1-3/4	1	8	096	224.46
867SV-420CSR	4X2	2-1/4	1	8	096	224.46
867SV-421CSR ¹	4X2-1/2	3	1	4	096	233.53
867SV-422CSR	4X3	3	1	4	096	246.18
867SV-521CSR ¹	6X1/4	1-1/8	1	4	096	388.56
867SV-523CSR ¹	6X1/2	1-1/8	1	4	096	374.12
867SV-524CSR ¹	6X3/4	1-1/8	1	4	096	374.12
867SV-525CSR	6X1	1-1/8	1	4	096	374.12
867SV-526CSR ¹	6X1-1/4	2-1/4	1	4	096	374.12
867SV-527CSR ¹	6X1-1/2	2-1/4	1	4	096	374.12
867SV-528CSR	6X2	2-1/4	1	4	096	374.12
867SV-529CSR ¹	6X2-1/2	3	1	4	096	391.94
867SV-530CSR	6X3	3	1	4	096	407.73
867SV-532CSR	6X4	4	1	4	096	436.44
867SV-571CSR ¹	8X1/4	4	1	0	096	661.04
867SV-573CSR ¹	8X1/2	4	1	0	096	644.47
867SV-574CSR ¹	8X3/4	4	1	0	096	644.47
867SV-575CSR ¹	8X1	4	1	0	096	644.47
867SV-576CSR ¹	8X1-1/4	4	1	0	096	644.47
867SV-577CSR ¹	8X1-1/2	4	1	0	096	644.47
867SV-578CSR ¹	8X2	4	1	0	096	644.47
867SV-579CSR ¹	8X2-1/2	4	1	0	096	708.97
867SV-580CSR ¹	8X3	4	1	0	096	744.44
867SV-582CSR	8X4	4	1	0	096	789.20
867SV-585CSR	8X6	6	1	0	096	830.82
867SV-624CSR	10X4	4	1	0	096	939.17
867SV-626CSR	10X6	6	1	0	096	1080.02
867SV-664CSR	12X4	4	1	0	096	1177.18
867SV-666CSR	12X6	6	1	0	096	1365.54

¹ Outlet-sized with Bushing



Clamp-On Saddle x SR Thread Single Outlet, CPVC Gray

with EPDM O-ring Seal & Zinc-Plated Hardware

2"- 4" 235, 6" 200, 8"-12" 150 psi @ 73°F (23°C)

867-247CSR	2X1/2	3/4	1	10	096	69.19
867-248CSR	2X3/4	7/8	1	10	096	69.19
867-249CSR	2X1	1-1/8	1	10	096	69.19
867-250CSR	2X1-1/4	1-1/2	1	10	096	69.19

Part Number	Size	Hole Saw Dia	Std Pk	Mstr Ctn	Prod Code	MSRP
-------------	------	--------------	--------	----------	-----------	------

Clamp-On Saddle x SR Thread Single Outlet, CPVC Gray

(continued)

with EPDM O-ring Seal & Zinc-Plated Hardware

867-251CSR	2X1-1/2	1-1/2	1	10	096	69.19
867-291CSR	2-1/2X1-1/2	1-3/4	1	10	096	94.55
867-333CSR ¹	3X1/2	7/8	1	10	096	94.55
867-334CSR	3X3/4	7/8	1	10	096	94.55
867-335CSR	3X1	1-1/8	1	10	096	94.55
867-336CSR ¹	3X1-1/4	2-1/4	1	10	096	94.55
867-337CSR ¹	3X1-1/2	2-1/4	1	10	096	94.55
867-338CSR	3X2	2-1/4	1	10	096	94.55
867-415CSR ¹	4X1/2	1-1/8	1	10	096	119.07
867-416CSR ¹	4X3/4	1-1/8	1	10	096	119.07
867-417CSR	4X1	1-1/8	1	8	096	119.07
867-418CSR ¹	4X1-1/4	1-3/4	1	8	096	119.07
867-419CSR	4X1-1/2	1-3/4	1	8	096	119.07
867-420CSR	4X2	2-1/4	1	8	096	119.07
867-421CSR ¹	4X2-1/2	3	1	4	096	132.13
867-422CSR	4X3	3	1	4	096	142.61
867-523CSR ¹	6X1/2	1-1/8	1	4	096	198.43
867-524CSR ¹	6X3/4	1-1/8	1	4	096	198.43
867-525CSR	6X1	1-1/8	1	4	096	198.43
867-526CSR ¹	6X1-1/4	2-1/4	1	4	096	198.43
867-527CSR ¹	6X1-1/2	2-1/4	1	4	096	198.43
867-528CSR	6X2	2-1/4	1	4	096	198.43
867-529CSR ¹	6X2-1/2	3	1	4	096	209.96
867-530CSR	6X3	3	1	4	096	222.03
867-532CSR	6X4	4	1	4	096	241.45
867-573CSR ¹	8X1/2	4	1	0	096	419.33
867-574CSR	8X3/4	4	1	0	096	419.33
867-575CSR ¹	8X1	4	1	0	096	419.33
867-576CSR ¹	8X1-1/4	4	1	0	096	419.33
867-577CSR ¹	8X1-1/2	4	1	0	096	419.33
867-578CSR ¹	8X2	4	1	0	096	419.33
867-579CSR ¹	8X2-1/2	4	1	0	096	461.23
867-580CSR ¹	8X3	4	1	0	096	488.91
867-582CSR	8X4	4	1	0	096	518.36
867-585CSR	8X6	6	1	0	096	538.95
867-624CSR	10X4	4	1	0	096	616.89
867-626CSR	10X6	6	1	0	096	709.38
867-664CSR	12X4	4	1	0	096	773.26
867-666CSR	12X6	6	1	0	096	896.92

¹ Outlet-sized with Bushing



Clamp-On Saddle x SR Thread Single Outlet, CPVC Gray

with EPDM O-ring Seal & SS Hardware

2"- 4" 235, 6" 200, 8"-12" 150 psi @ 73°F (23°C)

867S-245CSR ¹	2X1/4	1-1/8	1	10	096	121.98
867S-247CSR	2X1/2	3/4	1	10	096	118.78
867S-248CSR	2X3/4	7/8	1	10	096	118.78
867S-249CSR	2X1	1-1/8	1	10	096	118.78
867S-250CSR	2X1-1/4	1-1/2	1	10	096	118.78

Suitable for Oil-Free air handling to 25 psi, not for distribution of compressed air or gas

Schedule 80 CPVC Product
Clamp-On Saddles

Clamp-On Saddles

Part Number	Size	Hole Saw Dia	Std Pk	Mstr Ctn	Prod Code	MSRP
-------------	------	--------------	--------	----------	-----------	------

Clamp-On Saddle x SR Thread Single Outlet, CPVC Gray

(continued)

with EPDM O-ring Seal & SS Hardware

867S-251CSR	2X1-1/2	1-1/2	1	10	096	118.78
867S-291CSR	2-1/2X1-1/2	1-3/4	1	10	096	159.01
867S-331CSR ¹	3X1/4	1-1/8	1	10	096	164.04
867S-333CSR ¹	3X1/2	7/8	1	10	096	159.01
867S-334CSR	3X3/4	7/8	1	10	096	159.01
867S-335CSR	3X1	1-1/8	1	10	096	159.01
867S-336CSR ¹	3X1-1/4	2-1/4	1	10	096	159.01
867S-337CSR ¹	3X1-1/2	2-1/4	1	10	096	159.01
867S-338CSR	3X2	2-1/4	1	10	096	159.01
867S-413CSR ¹	4X1/4	1-1/8	1	8	096	206.22
867S-415CSR ¹	4X1/2	1-1/8	1	10	096	200.12
867S-416CSR ¹	4X3/4	1-1/8	1	10	096	200.12
867S-417CSR	4X1	1-1/8	1	8	096	200.12
867S-418CSR ¹	4X1-1/4	1-3/4	1	8	096	200.12
867S-419CSR	4X1-1/2	1-3/4	1	8	096	200.12
867S-420CSR	4X2	2-1/4	1	8	096	200.12
867S-421CSR ¹	4X2-1/2	3	1	4	096	212.20
867S-422CSR	4X3	3	1	4	096	222.15
867S-521CSR ¹	6X1/4	1-1/8	1	8	096	345.95
867S-523CSR ¹	6X1/2	1-1/8	1	4	096	333.52
867S-524CSR ¹	6X3/4	1-1/8	1	4	096	333.52
867S-525CSR	6X1	1-1/8	1	4	096	333.52
867S-526CSR ¹	6X1-1/4	2-1/4	1	4	096	333.52
867S-527CSR ¹	6X1-1/2	2-1/4	1	4	096	333.52
867S-528CSR	6X2	2-1/4	1	4	096	333.52
867S-529CSR ¹	6X2-1/2	3	1	4	096	346.85
867S-530CSR	6X3	3	1	4	096	358.48
867S-532CSR	6X4	4	1	4	096	374.27
867S-571CSR ¹	8X1/4	4	1	0	096	614.33
867S-573CSR	8X1/2	4	1	0	096	592.51
867S-574CSR ¹	8X3/4	4	1	0	096	592.51
867S-575CSR ¹	8X1	4	1	0	096	592.51
867S-576CSR ¹	8X1-1/4	4	1	0	096	592.51
867S-577CSR ¹	8X1-1/2	4	1	0	096	592.51
867S-578CSR ¹	8X2	4	1	0	096	592.51
867S-579CSR ¹	8X2-1/2	4	1	0	096	651.74
867S-580CSR ¹	8X3	4	1	0	096	684.26
867S-582CSR	8X4	4	1	0	096	725.31
867S-585CSR	8X6	6	1	0	096	760.82
867S-624CSR	10X4	4	1	0	096	863.13
867S-626CSR	10X6	6	1	0	096	992.60
867S-664CSR	12X4	4	1	0	096	1081.93
867S-666CSR	12X6	6	1	0	096	1255.08

¹ Outlet-sized with Bushing

Part Number	Size	Hole Saw Dia	Std Pk	Mstr Ctn	Prod Code	MSRP
-------------	------	--------------	--------	----------	-----------	------

Clamp-On Saddle x Socket Double Outlet, CPVC Gray

with FKM O-ring Seal & Zinc-Plated Hardware



2"- 4" 235, 6" 200, 8"-12" 150 psi @ 73°F (23°C)

868V-247C	2X1/2	3/4	1	10	096	94.68
868V-248C	2X3/4	7/8	1	10	096	94.68
868V-249C	2X1	1-1/8	1	10	096	94.68
868V-250C	2X1-1/4	1-1/2	1	10	096	94.68
868V-251C	2X1-1/2	1-1/2	1	10	096	94.68
868V-291C	2-1/2X1-1/2	1-3/4	1	10	096	115.78
868V-333C ¹	3X1/2	7/8	1	10	096	115.78
868V-334C	3X3/4	7/8	1	10	096	115.78
868V-335C	3X1	1-1/8	1	10	096	115.78
868V-336C ¹	3X1-1/4	2-1/4	1	10	096	115.78
868V-337C ¹	3X1-1/2	2-1/4	1	10	096	115.78
868V-338C ¹	3X2	2-1/4	1	10	096	115.78
868V-415C ¹	4X1/2	1-1/8	1	10	096	155.87
868V-416C ¹	4X3/4	1-1/8	1	10	096	155.87
868V-417C	4X1	1-1/8	1	8	096	155.87
868V-418C ¹	4X1-1/4	1-3/4	1	8	096	155.87
868V-419C	4X1-1/2	1-3/4	1	8	096	155.87
868V-420C	4X2	2-1/4	1	8	096	155.87
868V-421C ¹	4X2-1/2	3	1	4	096	162.87
868V-422C	4X3	3	4	0	096	177.75
868V-523C ¹	6X1/2	1-1/8	1	4	096	252.20
868V-524C ¹	6X3/4	1-1/8	1	4	096	252.20
868V-525C	6X1	1-1/8	1	4	096	252.20
868V-526C ¹	6X1-1/4	2-1/4	1	4	096	252.20
868V-527C ¹	6X1-1/2	2-1/4	1	4	096	252.20
868V-528C	6X2	2-1/4	1	4	096	252.20
868V-529C	6X2-1/2	3	1	4	096	292.09
868V-530C	6X3	3	1	4	096	307.98
868V-532C	6X4	4	1	4	096	321.31
868V-573C ¹	8X1/2	4	1	0	096	488.27
868V-574C ¹	8X3/4	4	1	0	096	488.27
868V-575C ¹	8X1	4	1	0	096	488.27
868V-576C ¹	8X1-1/4	4	1	0	096	488.27
868V-577C ¹	8X1-1/2	4	1	0	096	488.27
868V-578C ¹	8X2	4	1	0	096	488.27
868V-579C ¹	8X2-1/2	4	1	0	096	537.05
868V-580C ¹	8X3	4	1	0	096	563.86
868V-582C	8X4	4	1	0	096	597.66
868V-585C	8X6	6	1	0	096	663.45
868V-624C	10X4	4	1	0	096	789.42
868V-626C	10X6	6	1	0	096	908.13
868V-664C	12X4	4	1	0	096	989.64
868V-666C	12X6	6	1	0	096	1147.83

¹ Outlet-sized with Bushing

**Schedule 80 CPVC Product
Clamp-On Saddles**

Clamp-On Saddles

Part Number	Size	Hole Saw Dia	Std Pk	Mstr Ctn	Prod Code	MSRP
-------------	------	--------------	--------	----------	-----------	------

Clamp-On Saddle x Socket Double Outlet,
CPVC Gray

with FKM O-ring Seal & SS Hardware

2" - 4" 235, 6" 200, 8"-12" 150 psi @ 73°F (23°C)

868SV-247C	2X1/2	3/4	1	10	096	144.47
868SV-248C	2X3/4	7/8	1	10	096	144.47
868SV-249C	2X1	1-1/8	1	10	096	144.47
868SV-250C	2X1-1/4	1-1/2	1	10	096	144.47
868SV-251C	2X1-1/2	1-1/2	1	10	096	144.47
868SV-291C	2-1/2X1-1/2	1-3/4	1	10	096	192.21
868SV-333C ¹	3X1/2	7/8	1	10	096	192.21
868SV-334C	3X3/4	7/8	1	10	096	192.21
868SV-335C	3X1	1-1/8	1	10	096	192.21
868SV-336C ¹	3X1-1/4	2-1/4	1	10	096	192.21
868SV-337C ¹	3X1-1/2	2-1/4	1	10	096	192.21
868SV-338C	3X2	2-1/4	1	10	096	192.21
868SV-415C ¹	4X1/2	1-1/8	1	10	096	244.26
868SV-416C ¹	4X3/4	1-1/8	1	10	096	244.26
868SV-417C	4X1	1-1/8	1	8	096	244.26
868SV-418C ¹	4X1-1/4	1-3/4	1	8	096	244.26
868SV-419C	4X1-1/2	1-3/4	1	8	096	244.26
868SV-420C	4X2	2-1/4	1	8	096	244.26
868SV-421C ¹	4X2-1/2	3	1	4	096	254.16
868SV-422C	4X3	3	4	0	096	270.76
868SV-523C ¹	6X1/2	1-1/8	1	4	096	406.31
868SV-524C ¹	6X3/4	1-1/8	1	4	096	406.31
868SV-525C	6X1	1-1/8	1	4	096	406.31
868SV-526C ¹	6X1-1/4	2-1/4	1	4	096	406.31
868SV-527C ¹	6X1-1/2	2-1/4	1	4	096	406.31
868SV-528C	6X2	2-1/4	1	4	096	406.31
868SV-529C ¹	6X2-1/2	3	1	4	096	418.80
868SV-530C	6X3	3	1	4	096	438.14
868SV-532C	6X4	4	1	4	096	448.57
868SV-573C ¹	8X1/2	4	1	0	096	685.83
868SV-574C ¹	8X3/4	4	1	0	096	685.83
868SV-575C ¹	8X1	4	1	0	096	685.83
868SV-576C ¹	8X1-1/4	4	1	0	096	685.83
868SV-577C ¹	8X1-1/2	4	1	0	096	685.83
868SV-578C ¹	8X2	4	1	0	096	685.83
868SV-579C ¹	8X2-1/2	4	1	0	096	754.15
868SV-580C ¹	8X3	4	1	0	096	792.05
868SV-582C	8X4	4	1	0	096	839.52
868SV-585C	8X6	6	1	0	096	931.99
868SV-624C	10X4	4	1	0	096	1109.07
868SV-626C	10X6	6	1	0	096	1275.58
868SV-664C	12X4	4	1	0	096	1390.06
868SV-666C	12X6	6	1	0	096	1612.64

¹ Outlet-sized with Bushing



Clamp-On Saddle x Socket Double Outlet,
CPVC Gray

with EPDM O-ring Seal & Zinc-Plated
Hardware

2" - 4" 235, 6" 200, 8"-12" 150 psi @ 73°F (23°C)

Part Number	Size	Hole Saw Dia	Std Pk	Mstr Ctn	Prod Code	MSRP
868-247C	2X1/2	3/4	1	10	096	79.41
868-248C	2X3/4	7/8	1	10	096	79.41
868-249C	2X1	1-1/8	1	10	096	79.41
868-250C	2X1-1/4	1-1/2	1	10	096	79.41
868-251C	2X1-1/2	1-1/2	1	10	096	79.41
868-291C	2-1/2X1-1/2	1-3/4	1	10	096	109.04
868-333C ¹	3X1/2	7/8	1	10	096	109.04
868-334C	3X3/4	7/8	1	10	096	109.04
868-335C	3X1	1-1/8	1	10	096	109.04
868-336C ¹	3X1-1/4	2-1/4	1	10	096	109.04
868-337C ¹	3X1-1/2	2-1/4	1	10	096	109.04
868-338C	3X2	2-1/4	1	10	096	109.04
868-415C ¹	4X1/2	1-1/8	1	10	096	136.86
868-416C ¹	4X3/4	1-1/8	1	10	096	136.86
868-417C	4X1	1-1/8	1	8	096	136.86
868-418C ¹	4X1-1/4	1-3/4	1	8	096	136.86
868-419C	4X1-1/2	1-3/4	1	8	096	136.86
868-420C	4X2	2-1/4	1	8	096	136.86
868-421C ¹	4X2-1/2	3	1	4	096	144.12
868-422C	4X3	3	1	4	096	156.65
868-523C ¹	6X1/2	1-1/8	1	4	096	228.49
868-524C ¹	6X3/4	1-1/8	1	4	096	228.49
868-525C	6X1	1-1/8	1	4	096	228.49
868-526C ¹	6X1-1/4	2-1/4	1	4	096	228.49
868-527C ¹	6X1-1/2	2-1/4	1	4	096	228.49
868-528C	6X2	2-1/4	1	4	096	228.49
868-529C ¹	6X2-1/2	3	1	4	096	242.91
868-530C	6X3	3	1	4	096	256.80
868-532C	6X4	4	1	4	096	265.07
868-573C ¹	8X1/2	4	1	0	096	457.86
868-574C ¹	8X3/4	4	1	0	096	457.86
868-575C ¹	8X1	4	1	0	096	457.86
868-576C ¹	8X1-1/4	4	1	0	096	457.86
868-577C ¹	8X1-1/2	4	1	0	096	457.86
868-578C ¹	8X2	4	1	0	096	457.86
868-579C ¹	8X2-1/2	4	1	0	096	503.58
868-580C ¹	8X3	4	1	0	096	528.82
868-582C	8X4	4	1	0	096	560.49
868-585C	8X6	6	1	0	096	622.15
868-624C	10X4	4	1	0	096	740.42
868-626C	10X6	6	1	0	096	851.41
868-664C	12X4	4	1	0	096	927.97
868-666C	12X6	6	1	0	096	1076.64

¹ Outlet-sized with Bushing



Schedule 80 CPVC Product
Clamp-On Saddles

Clamp-On Saddles

Part Number	Size	Hole Saw Dia	Std Pk	Mstr Ctn	Prod Code	MSRP
-------------	------	--------------	--------	----------	-----------	------

Clamp-On Saddle x Socket Double Outlet,
CPVC Gray

with EPDM O-ring Seal & SS Hardware

2"- 4" 235, 6" 200, 8"-12" 150 psi @ 73°F (23°C)

868S-247C	2X1/2	3/4	1	10	096	125.61
868S-248C	2X3/4	7/8	1	10	096	125.61
868S-249C	2X1	1-1/8	1	10	096	125.61
868S-250C	2X1-1/4	1-1/2	1	10	096	125.61
868S-251C	2X1-1/2	1-1/2	1	10	096	125.61
868S-291C	2-1/2X1-1/2	1-3/4	1	10	096	167.06
868S-333C ¹	3X1/2	7/8	1	10	096	167.06
868S-334C	3X3/4	7/8	1	10	096	167.06
868S-335C	3X1	1-1/8	1	10	096	167.06
868S-336C ¹	3X1-1/4	2-1/4	1	10	096	167.06
868S-337C ¹	3X1-1/2	2-1/4	1	10	096	167.06
868S-338C	3X2	2-1/4	1	10	096	167.06
868S-415C ¹	4X1/2	1-1/8	1	10	096	214.08
868S-416C ¹	4X3/4	1-1/8	1	10	096	214.08
868S-417C	4X1	1-1/8	1	8	096	214.08
868S-418C ¹	4X1-1/4	1-3/4	1	8	096	214.08
868S-419C	4X1-1/2	1-3/4	1	8	096	214.08
868S-420C	4X2	2-1/4	1	8	096	214.08
868S-421C ¹	4X2-1/2	3	1	4	096	224.04
868S-422C	4X3	3	4	0	096	234.31
868S-523C ¹	6X1/2	1-1/8	1	4	096	357.52
868S-524C ¹	6X3/4	1-1/8	1	4	096	357.52
868S-525C	6X1	1-1/8	1	4	096	357.52
868S-526C ¹	6X1-1/4	2-1/4	1	4	096	357.52
868S-527C ¹	6X1-1/2	2-1/4	1	4	096	357.52
868S-528C	6X2	2-1/4	1	4	096	357.52
868S-529C ¹	6X2-1/2	3	1	4	096	375.24
868S-530C	6X3	3	1	4	096	384.29
868S-532C	6X4	4	1	4	096	398.29
868S-573C ¹	8X1/2	4	1	0	096	623.22
868S-574C ¹	8X3/4	4	1	0	096	623.22
868S-575C ¹	8X1	4	1	0	096	623.22
868S-576C ¹	8X1-1/4	4	1	0	096	623.22
868S-577C ¹	8X1-1/2	4	1	0	096	623.22
868S-578C ¹	8X2	4	1	0	096	623.22
868S-579C ¹	8X2-1/2	4	1	0	096	685.53
868S-580C ¹	8X3	4	1	0	096	719.83
868S-582C	8X4	4	1	0	096	763.01
868S-585C	8X6	6	1	0	096	847.12
868S-624C	10X4	4	1	0	096	1008.01
868S-626C	10X6	6	1	0	096	1159.22
868S-664C	12X4	4	1	0	096	1263.56
868S-666C	12X6	6	1	0	096	1465.66

¹ Outlet-sized with Bushing



Part Number	Size	Hole Saw Dia	Std Pk	Mstr Ctn	Prod Code	MSRP
-------------	------	--------------	--------	----------	-----------	------

Clamp-On Saddle x SR Thread Double Outlet,
CPVC Gray

with FKM O-ring Seal & Zinc-Plated
Hardware



2"- 4" 235, 6" 200, 8"-12" 150 psi @ 73°F (23°C)

869V-247CSR	2X1/2	3/4	1	10	096	105.92
869V-248CSR	2X3/4	7/8	1	10	096	105.92
869V-249CSR	2X1	1-1/8	1	10	096	105.92
869V-250CSR	2X1-1/4	1-1/2	1	10	096	105.92
869V-251CSR	2X1-1/2	1-1/2	1	10	096	105.92
869V-291CSR	2-1/2X1-1/2	1-3/4	1	10	096	145.23
869V-333CSR ¹	3X1/2	7/8	1	10	096	145.23
869V-334CSR	3X3/4	7/8	1	10	096	145.23
869V-335CSR	3X1	1-1/8	1	10	096	145.23
869V-336CSR ¹	3X1-1/4	2-1/4	1	10	096	145.23
869V-337CSR ¹	3X1-1/2	2-1/4	1	10	096	145.23
869V-338CSR	3X2	2-1/4	1	10	096	145.23
869V-415CSR ¹	4X1/2	1-1/8	1	10	096	177.74
869V-416CSR ¹	4X3/4	1-1/8	1	10	096	177.74
869V-417CSR	4X1	1-1/8	1	8	096	177.74
869V-418CSR ¹	4X1-1/4	1-3/4	1	8	096	177.74
869V-419CSR	4X1-1/2	1-3/4	1	8	096	177.74
869V-420CSR	4X2	2-1/4	1	8	096	177.74
869V-421CSR ¹	4X2-1/2	3	1	4	096	190.88
869V-422CSR	4X3	3	4	0	096	201.04
869V-523CSR ¹	6X1/2	1-1/8	1	4	096	294.72
869V-524CSR ¹	6X3/4	1-1/8	1	4	096	294.72
869V-525CSR	6X1	1-1/8	1	4	096	294.72
869V-526CSR ¹	6X1-1/4	2-1/4	1	4	096	294.72
869V-527CSR ¹	6X1-1/2	2-1/4	1	4	096	294.72
869V-528CSR	6X2	2-1/4	1	4	096	294.72
869V-529CSR ¹	6X2-1/2	3	1	4	096	309.55
869V-530CSR	6X3	3	1	4	096	322.34
869V-532CSR	6X4	4	1	4	096	341.43
869V-573CSR ¹	8X1/2	4	1	0	096	542.77
869V-574CSR ¹	8X3/4	4	1	0	096	542.77
869V-575CSR ¹	8X1	4	1	0	096	542.77
869V-576CSR ¹	8X1-1/4	4	1	0	096	542.77
869V-577CSR ¹	8X1-1/2	4	1	0	096	542.77
869V-578CSR ¹	8X2	4	1	0	096	542.77
869V-579CSR ¹	8X2-1/2	4	1	0	096	597.03
869V-580CSR ¹	8X3	4	1	0	096	626.83
869V-582CSR	8X4	4	1	0	096	664.42
869V-585CSR	8X6	6	1	0	096	734.93
869V-624CSR	10X4	4	1	0	096	790.49
869V-626CSR	10X6	6	1	0	096	909.20
869V-664CSR	12X4	4	1	0	096	991.09
869V-666CSR	12X6	6	1	0	096	1149.51

¹ Outlet-sized with Bushing

Schedule 80 CPVC Product
Clamp-On Saddles

Clamp-On Saddles

Part Number	Size	Hole Saw Dia	Std Pk	Mstr Ctn	Prod Code	MSRP
-------------	------	--------------	--------	----------	-----------	------

Clamp-On Saddle x SR Thread Double Outlet,
CPVC Gray

with FKM O-ring Seal & SS Hardware

2"- 4" 235, 6" 200, 8"-12" 150 psi @ 73°F (23°C)

869SV-247CSR	2X1/2	3/4	1	10	096	155.87
869SV-248CSR	2X3/4	7/8	1	10	096	155.87
869SV-249CSR	2X1	1-1/8	1	10	096	155.87
869SV-250CSR	2X1-1/4	1-1/2	1	10	096	155.87
869SV-251CSR	2X1-1/2	1-1/2	1	10	096	155.87
869SV-291CSR	2-1/2X1-1/2	1-1/2	1	10	096	197.55
869SV-333CSR ¹	3X1/2	7/8	1	10	096	197.55
869SV-334CSR	3X3/4	7/8	1	10	096	197.55
869SV-335CSR	3X1	1-1/8	1	10	096	197.55
869SV-336CSR ¹	3X1-1/4	2-1/4	1	10	096	197.55
869SV-337CSR ¹	3X1-1/2	2-1/4	1	10	096	197.55
869SV-338CSR	3X2	2-1/4	1	10	096	197.55
869SV-415CSR ¹	4X1/2	1-1/8	1	10	096	259.41
869SV-416CSR ¹	4X3/4	1-1/8	1	10	096	259.41
869SV-417CSR	4X1	1-1/8	1	8	096	259.41
869SV-418CSR ¹	4X1-1/4	1-3/4	1	8	096	259.41
869SV-419CSR	4X1-1/2	1-3/4	1	8	096	259.41
869SV-420CSR	4X2	2-1/4	1	8	096	259.41
869SV-421CSR ¹	4X2-1/2	3	1	4	096	272.36
869SV-422CSR	4X3	3	4	0	096	291.78
869SV-523CSR ¹	6X1/2	1-1/8	1	4	096	463.54
869SV-524CSR ¹	6X3/4	1-1/8	1	4	096	463.54
869SV-525CSR	6X1	1-1/8	1	4	096	463.54
869SV-526CSR ¹	6X1-1/4	2-1/4	1	4	096	463.54
869SV-527CSR ¹	6X1-1/2	2-1/4	1	4	096	463.54
869SV-528CSR	6X2	2-1/4	1	4	096	463.54
869SV-529CSR ¹	6X2-1/2	3	1	4	096	481.34
869SV-530CSR	6X3	3	1	4	096	496.61
869SV-532CSR	6X4	4	1	4	096	507.99
869SV-573CSR ¹	8X1/2	4	1	0	096	759.22
869SV-574CSR ¹	8X3/4	4	1	0	096	759.22
869SV-575CSR ¹	8X1	4	1	0	096	759.22
869SV-576CSR ¹	8X1-1/4	4	1	0	096	759.22
869SV-577CSR ¹	8X1-1/2	4	1	0	096	759.22
869SV-578CSR ¹	8X2	4	1	0	096	759.22
869SV-579CSR ¹	8X2-1/2	4	1	0	096	835.03
869SV-580CSR ¹	8X3	4	1	0	096	861.46
869SV-582CSR	8X4	4	1	0	096	929.44
869SV-585CSR	8X6	6	1	0	096	993.01
869SV-624CSR	10X4	4	1	0	096	1106.02
869SV-626CSR	10X6	6	1	0	096	1271.99
869SV-664CSR	12X4	4	1	0	096	1386.45
869SV-666CSR	12X6	6	1	0	096	1608.41



Part Number	Size	Hole Saw Dia	Std Pk	Mstr Ctn	Prod Code	MSRP
-------------	------	--------------	--------	----------	-----------	------

Clamp-On Saddle x SR Thread Double Outlet,
CPVC Gray

with EPDM O-ring Seal & Zinc-Plated
Hardware

2"- 4" 235, 6" 200, 8"-12" 150 psi @ 73°F (23°C)

869-247CSR	2X1/2	3/4	1	10	096	92.03
869-248CSR	2X3/4	7/8	1	10	096	92.03
869-249CSR	2X1	1-1/8	1	10	096	92.03
869-250CSR	2X1-1/4	1-1/2	1	10	096	92.03
869-251CSR	2X1-1/2	1-1/2	1	10	096	92.03
869-291CSR	2-1/2X1-1/2	1-3/4	1	10	096	124.27
869-333CSR ¹	3X1/2	7/8	1	10	096	124.27
869-334CSR	3X3/4	7/8	1	10	096	124.27
869-335CSR	3X1	1-1/8	1	10	096	124.27
869-336CSR ¹	3X1-1/4	1-1/8	1	10	096	124.27
869-337CSR ¹	3X1-1/2	2-1/4	1	10	096	124.27
869-338CSR	3X2	2-1/4	1	10	096	124.27
869-415CSR ¹	4X1/2	1-1/8	1	10	096	154.26
869-416CSR ¹	4X3/4	1-1/8	1	10	096	154.26
869-417CSR	4X1	1-1/8	1	8	096	154.26
869-418CSR ¹	4X1-1/4	1-3/4	1	8	096	154.26
869-419CSR	4X1-1/2	1-3/4	1	8	096	154.26
869-420CSR	4X2	2-1/4	1	8	096	154.26
869-421CSR ¹	4X2-1/2	3	1	4	096	170.60
869-422CSR	4X3	3	1	4	096	184.62
869-523CSR ¹	6X1/2	1-1/8	1	4	096	251.99
869-524CSR ¹	6X3/4	1-1/8	1	4	096	251.99
869-525CSR	6X1	1-1/8	1	4	096	251.99
869-526CSR ¹	6X1-1/4	2-1/4	1	4	096	251.99
869-527CSR ¹	6X1-1/2	2-1/4	1	4	096	251.99
869-528CSR	6X2	2-1/4	1	4	096	251.99
869-529CSR ¹	6X2-1/2	3	1	4	096	269.72
869-530CSR	6X3	3	1	4	096	291.82
869-532CSR	6X4	4	1	4	096	309.48
869-573CSR ¹	8X1/2	4	1	0	096	487.85
869-574CSR ¹	8X3/4	4	1	0	096	487.85
869-575CSR ¹	8X1	4	1	0	096	487.85
869-576CSR ¹	8X1-1/4	4	1	0	096	487.85
869-577CSR ¹	8X1-1/2	4	1	0	096	487.85
869-578CSR ¹	8X2	4	1	0	096	487.85
869-579CSR ¹	8X2-1/2	4	1	0	096	536.75
869-580CSR ¹	8X3	4	1	0	096	563.69
869-582CSR	8X4	4	1	0	096	597.44
869-585CSR	8X6	6	1	0	096	645.55
869-624CSR	10X4	4	1	0	096	710.85
869-626CSR	10X6	6	1	0	096	817.63
869-664CSR	12X4	4	1	0	096	891.23
869-666CSR	12X6	6	1	0	096	1033.80

¹ Outlet-sized with Bushing



Schedule 80 CPVC Product
Clamp-On Saddles & Hot-Tap Saddles

Clamp-On Saddles

Part Number	Size	Hole Saw Dia	Std Pk	Mstr Ctn	Prod Code	MSRP
-------------	------	--------------	--------	----------	-----------	------

Clamp-On Saddle x SR Thread Double Outlet, CPVC Gray

with EPDM O-ring Seal & SS Hardware

2"- 4" 235, 6" 200, 8"-12" 150 psi @ 73°F (23°C)

869S-247CSR	2X1/2	3/4	1	10	096	147.92
869S-248CSR	2X3/4	7/8	1	10	096	147.92
869S-249CSR	2X1	1-1/8	1	10	096	147.92
869S-250CSR	2X1-1/4	1-1/2	1	10	096	147.92
869S-251CSR	2X1-1/2	1-1/2	1	10	096	147.92
869S-291CSR	2-1/2X1-1/2	1-3/4	1	10	096	195.07
869S-333CSR ¹	3X1/2	7/8	1	10	096	195.07
869S-334CSR	3X3/4	7/8	1	10	096	195.07
869S-335CSR	3X1	1-1/8	1	10	096	195.07
869S-336CSR ¹	3X1-1/4	2-1/4	1	10	096	195.07
869S-337CSR ¹	3X1-1/2	2-1/4	1	10	096	195.07
869S-338CSR	3X2	2-1/4	1	10	096	195.07
869S-415CSR ¹	4X1/2	1-1/8	1	10	096	244.25
869S-416CSR ¹	4X3/4	1-1/8	1	10	096	244.25
869S-417CSR	4X1	1-1/8	1	8	096	244.25
869S-418CSR ¹	4X1-1/4	1-3/4	1	8	096	244.25
869S-419CSR	4X1-1/2	1-3/4	1	8	096	244.25
869S-420CSR	4X2	2-1/4	1	8	096	244.25
869S-421CSR ¹	4X2-1/2	3	1	4	096	262.39
869S-422CSR	4X3	3	4	0	096	281.25
869S-523CSR ¹	6X1/2	1-1/8	1	4	096	411.38
869S-524CSR ¹	6X3/4	1-1/8	1	4	096	411.38
869S-525CSR	6X1	1-1/8	1	4	096	411.38
869S-526CSR ¹	6X1-1/4	2-1/4	1	4	096	411.38
869S-527CSR ¹	6X1-1/2	2-1/4	1	4	096	411.38
869S-528CSR	6X2	2-1/4	1	4	096	411.38
869S-529CSR ¹	6X2-1/2	3	1	4	096	420.62
869S-530CSR	6X3	3	1	4	096	439.21
869S-532CSR	6X4	4	1	4	096	451.46
869S-573CSR ¹	8X1/2	4	1	0	096	692.40
869S-574CSR ¹	8X3/4	4	1	0	096	692.40
869S-575CSR ¹	8X1	4	1	0	096	692.40
869S-576CSR ¹	8X1-1/4	4	1	0	096	692.40
869S-577CSR ¹	8X1-1/2	4	1	0	096	692.40
869S-578CSR ¹	8X2	4	1	0	096	692.40
869S-579CSR ¹	8X2-1/2	4	1	0	096	761.59
869S-580CSR ¹	8X3	4	1	0	096	799.57
869S-582CSR	8X4	4	1	0	096	847.61
869S-585CSR	8X6	6	1	0	096	890.13
869S-624CSR	10X4	4	1	0	096	1008.66
869S-626CSR	10X6	6	1	0	096	1159.86
869S-664CSR	12X4	4	1	0	096	1264.39
869S-666CSR	12X6	6	1	0	096	1466.53



Hot-Tap Saddles

Part Number	Size	Std Pk	Mstr Ctn	Prod Code	MSRP
-------------	------	--------	----------	-----------	------

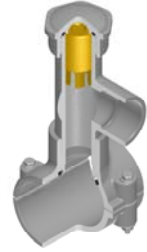
Hot-Tap Saddle CPVC Gray

EPDM Saddle x Socket (Spigot) Zinc Plated Bolts

2"- 4" 235, 6" 200, 8" 150 psi @ 73°F (23°C)

HT2-248C	2X3/4 (1)	1	5	050	104.55
HT2-251C	2X1-1/2 (2)	1	5	050	215.79
HT2-288C	2-1/2X3/4 (1)	1	5	050	111.59
HT2-291C	2-1/2X1-1/2 (2)	1	5	050	222.99
HT2-334C	3X3/4 (1)	1	5	050	127.85
HT2-337C	3X1-1/2 (2)	1	5	050	245.93
HT2-416C	4X3/4 (1)	1	5	050	147.73
HT2-419C	4X1-1/2 (2)	1	0	050	260.02
HT2-524C	6X3/4 (1)	1	5	050	166.13
HT2-527C	6X1-1/2 (2)	1	0	050	276.81
HT2-574C	8X3/4 (1)	1	5	050	153.00
HT2-577C	8X1-1/2 (2)	1	0	050	285.83

Not intended to convey or dispense water for human consumption through drinking or cooking



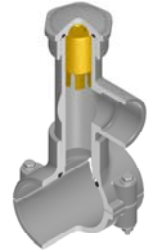
Hot-Tap Saddle CPVC Gray

EPDM Saddle x Socket (Spigot) SS316 Bolts

2"- 4" 235, 6" 200, 8" 150 psi @ 73°F (23°C)

HT2S-248C	2X3/4 (1)	1	5	050	162.51
HT2S-251C	2X1-1/2 (2)	1	5	050	335.86
HT2S-288C	2-1/2X3/4 (1)	1	5	050	173.71
HT2S-291C	2-1/2X1-1/2 (2)	1	5	050	347.23
HT2S-334C	3X3/4 (1)	1	5	050	199.18
HT2S-337C	3X-1/2 (2)	1	5	050	382.80
HT2S-416C	4X3/4 (1)	1	5	050	230.05
HT2S-419C	4X1-1/2 (2)	1	0	050	404.85
HT2S-524C	6X3/4 (1)	1	5	050	258.22
HT2S-527C	6X1-1/2 (2)	1	0	050	430.83
HT2S-574C	8X3/4 (1)	1	0	050	279.17
HT2S-577C	8X1-1/2 (2)	1	0	050	465.86

Not intended to convey or dispense water for human consumption through drinking or cooking



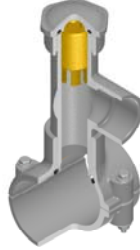
Schedule 80 CPVC Product
Hot-Tap Saddles

Hot-Tap Saddles

Part Number	Size	Std Pk	Mstr Ctn	Prod Code	MSRP
-------------	------	--------	----------	-----------	------

Hot-Tap Saddle CPVC Gray

FKM Saddle x Soc (Spigot) Zinc Plated Bolts



2"- 4" 235, 6" 200, 8" 150 psi @ 73°F (23°C)

HT3-248C	2X3/4 (1)	1	5	050	113.60
HT3-251C	2X1-1/2 (2)	1	5	050	234.19
HT3-288C	2-1/2X3/4 (1)	1	5	050	121.35
HT3-291C	2-1/2X1-1/2 (2)	1	5	050	241.95
HT3-334C	3X3/4 (1)	1	5	050	138.67
HT3-337C	3X1-1/2 (2)	1	5	050	267.23
HT3-416C	4X3/4 (1)	1	5	050	249.55
HT3-419C	4X1-1/2 (2)	1	0	050	282.40
HT3-524C	6X3/4 (1)	1	5	050	180.38
HT3-527C	6X1-1/2 (2)	1	0	050	299.75
HT3-574C	8X3/4 (1)	1	0	050	195.00
HT3-577C	8X1-1/2 (2)	1	0	050	363.34

Not intended to convey or dispense water for human consumption through drinking or cooking

Hot-Tap Saddle CPVC Gray

FKM Saddle x Socket (Spigot) SS316 Bolts



2"- 4" 235, 6" 200, 8" 150 psi @ 73°F (23°C)

HT3S-248C	2X3/4 (1)	1	5	050	176.98
HT3S-251C	2X1-1/2 (2)	1	5	050	364.75
HT3S-288C	2-1/2X3/4 (1)	1	5	050	188.86
HT3S-291C	2-1/2X1-1/2 (2)	1	5	050	376.48
HT3S-334C	3X3/4 (1)	1	5	050	215.60
HT3S-337C	3X1-1/2 (2)	1	5	050	423.62
HT3S-416C	4X3/4 (1)	1	5	050	249.55
HT3S-419C	4X1-1/2 (2)	1	0	050	439.69
HT3S-524C	6X3/4 (1)	1	5	050	280.80
HT3S-527C	6X1-1/2 (2)	1	0	050	466.57
HT3S-574C	8X3/4 (1)	1	0	050	303.54
HT3S-577C	8X1-1/2 (2)	1	5	050	504.41

Not intended to convey or dispense water for human consumption through drinking or cooking

Part Number	Size	Std Pk	Mstr Ctn	Prod Code	MSRP
-------------	------	--------	----------	-----------	------

Hot-Tap Saddle CPVC Gray

EPDM with Stainless Steel Cutter & Bolts



2"- 4" 235, 6" 200, 8" 150 psi @ 73°F (23°C)

HTS2S-248C	2X3/4 (1)	1	5	050	499.99
HTS2S-251C	2X1-1/2 (2)	1	5	050	741.01
HTS2S-288C	2-1/2X3/4 (1)	1	5	050	534.99
HTS2S-291C	2-1/2X1-1/2 (2)	1	5	050	742.19
HTS2S-334C	3X3/4 (1)	1	5	050	510.27
HTS2S-337C	3X1-1/2 (2)	1	5	050	762.89
HTS2S-416C	4X3/4 (1)	1	5	050	543.33
HTS2S-419C	4X1-1/2 (2)	1	0	050	781.86
HTS2S-524C	6X3/4 (1)	1	5	050	633.33
HTS2S-527C	6X1-1/2 (2)	1	0	050	883.82
HTS2S-574C	8X3/4 (1)	1	0	050	878.57
HTS2S-577C	8X1-1/2 (2)	1	0	050	1046.44

Lead Free

Hot-Tap Saddle CPVC Gray

FKM with Stainless Steel Cutter & Bolts



2"- 4" 235, 6" 200, 8" 150 psi @ 73°F (23°C)

HTS3S-248C	2X3/4 (1)	1	5	050	507.83
HTS3S-251C	2X1-1/2 (2)	1	5	050	752.28
HTS3S-288C	2-1/2X3/4 (1)	1	5	050	543.51
HTS3S-291C	2-1/2X1-1/2 (2)	1	5	050	755.24
HTS3S-334C	3X3/4 (1)	1	5	050	467.33
HTS3S-337C	3X1-1/2 (2)	1	5	050	776.14
HTS3S-416C	4X3/4 (1)	1	5	050	553.56
HTS3S-419C	4X1-1/2 (2)	1	0	050	801.48
HTS3S-524C	6X3/4 (1)	1	5	050	643.23
HTS3S-527C	6X1-1/2 (2)	1	0	050	903.42
HTS3S-574C	8X3/4 (1)	1	0	050	898.01
HTS3S-577C	8X1-1/2 (2)	1	0	050	1055.80

Lead Free